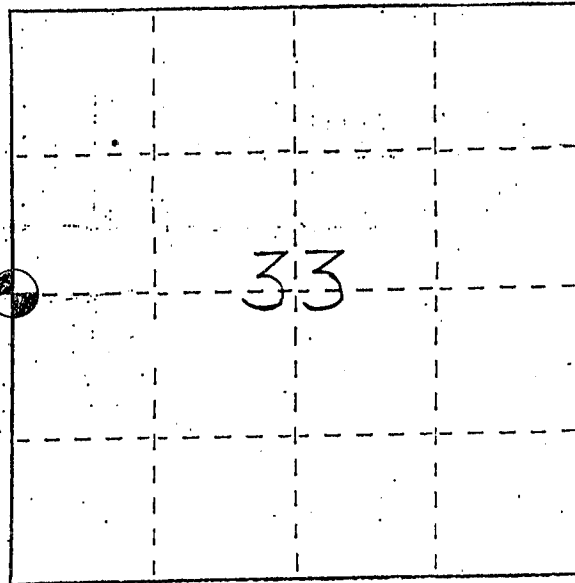


U. S. PUBLIC LAND SURVEY MONUMENT RECORD

INSTRUCTIONS: This record shall show the location of the corner and shall include all of the following nine elements (a through i).

- (a) Identify the corner by reference to the U.S. public land survey system.
- = Corner monument restored.

WEST 1/4 CORNER OF SECTION
33, TOWN 1 NORTH, RANGE
1 WEST, HAZEL GREEN TWP.,
GRANT COUNTY, WIS.

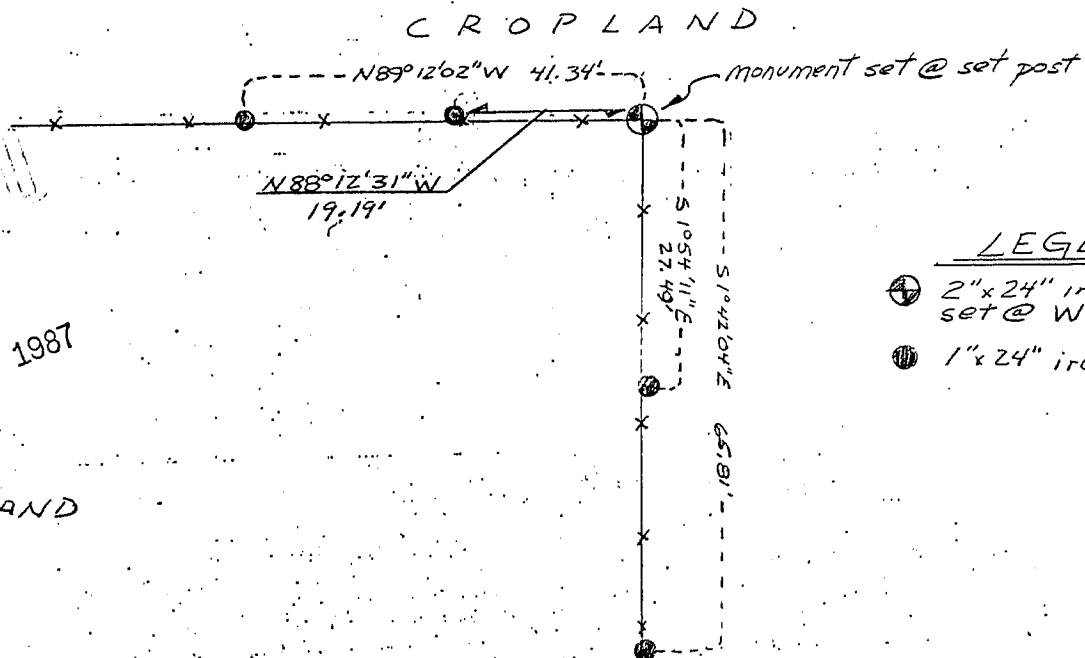


- (b) Describe any record evidence, monument evidence, occupational evidence, testimonial evidence or any other material evidence you considered, and whether the monument was found or placed.

No Record or Monument Evidence since orig Govt Survey Found
Occupational Evidence is Set Post & Straight Fence going
East & South of Corner. Aerial Photography Shows Good
Straight Lines From Corner.
Monument was placed

- (c) In the plan view drawing below, provide reference ties to at least 4 witness monuments, or, if the location is within a municipality, to at least 2 witness monuments. (Witness monuments shall be made of concrete, natural stone, iron or other equally durable material.) Describe witness monuments.

- (d) Show a plan view drawing depicting the relevant monuments and reference ties which is sufficient in detail to enable accurate relocation of the corner monument if the corner monument is disturbed. Indicate north.



- LEGEND
- ⊙ 2" x 24" iron pipe set @ W 1/4 corner
 - ⊙ 1" x 24" iron pipe set

MAR 17 1987

(e) Describe any material discrepancy between the location of the corner as restored or reestablished and the location of that corner as previously restored or reestablished by distance and direction. Show the discrepancy on the plan view drawing under (d), above. Show the distances between the corner as previously restored or reestablished and (1) the corner as restored or reestablished, and (2) to at least 2 of the witness monuments shown on the drawing in (d), above.

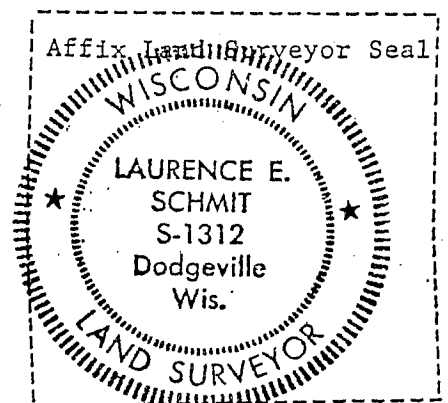
NO RECORD OF CORNER SINCE ORIG. GOVT SURVEY
CLOSE CORRELATION TO ORIG. GOVT SURVEY WITH
E¹/₄ CORNER OF 33-1-1W BEING 5281.06' EAST OF
CORNER

(f) Was the corner restored through acceptance of (1) an obliterated evidence location, or, (2) a found perpetuated location?

(1.)

(g&h) Was the corner reestablished through lost corner proportionate methods? If so, show the method, including the directions and distances to other public land survey corners used as evidence or used for proportioning in determining the corner location?

EXISTING LOCATION OF SET POST ACCEPTED. CORNER
LOCATION WAS VERIFIED BY EDM TRAVERSE BETWEEN
E¹/₄ CORNER & W¹/₄ CORNER OF SECTION. FARMER STATED
THAT CORNER LOCATION HAS NOT BEEN MOVED AS TO HIS
KNOWLEDGE



LAURENCE E. SCHMIT

(i) I, LAURENCE E. SCHMIT
(type or print name) certify that the corner location shown
on this record was determined by me or under my direction and
control and that this U.S. Public Land Survey Monument Record is
correct and complete to the best of my knowledge and belief.

Laurence E. Schmit
Signature

7-18-86
Date