

U.S. PUBLIC LAND SURVEY MONUMENT RECORD

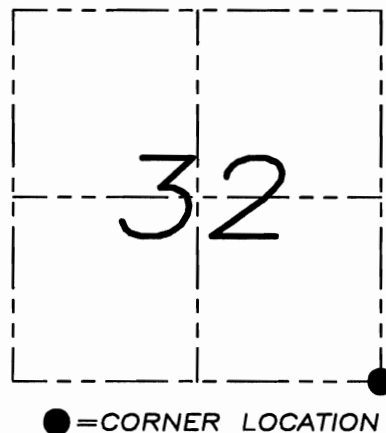
Section 32, Town 1 North Range 1 West, Town of Hazel Green, Grant County, Wisconsin

CERTIFICATE

I, Larry L. Austin, do hereby certify that the corner location on this record was determined by me and/or under my direct supervision and that this U.S. public land survey monument record is correct and complete to the best of my knowledge and belief.



Larry L. Austin
 Larry L. Austin 6-8-09 date



HISTORY OF CORNER

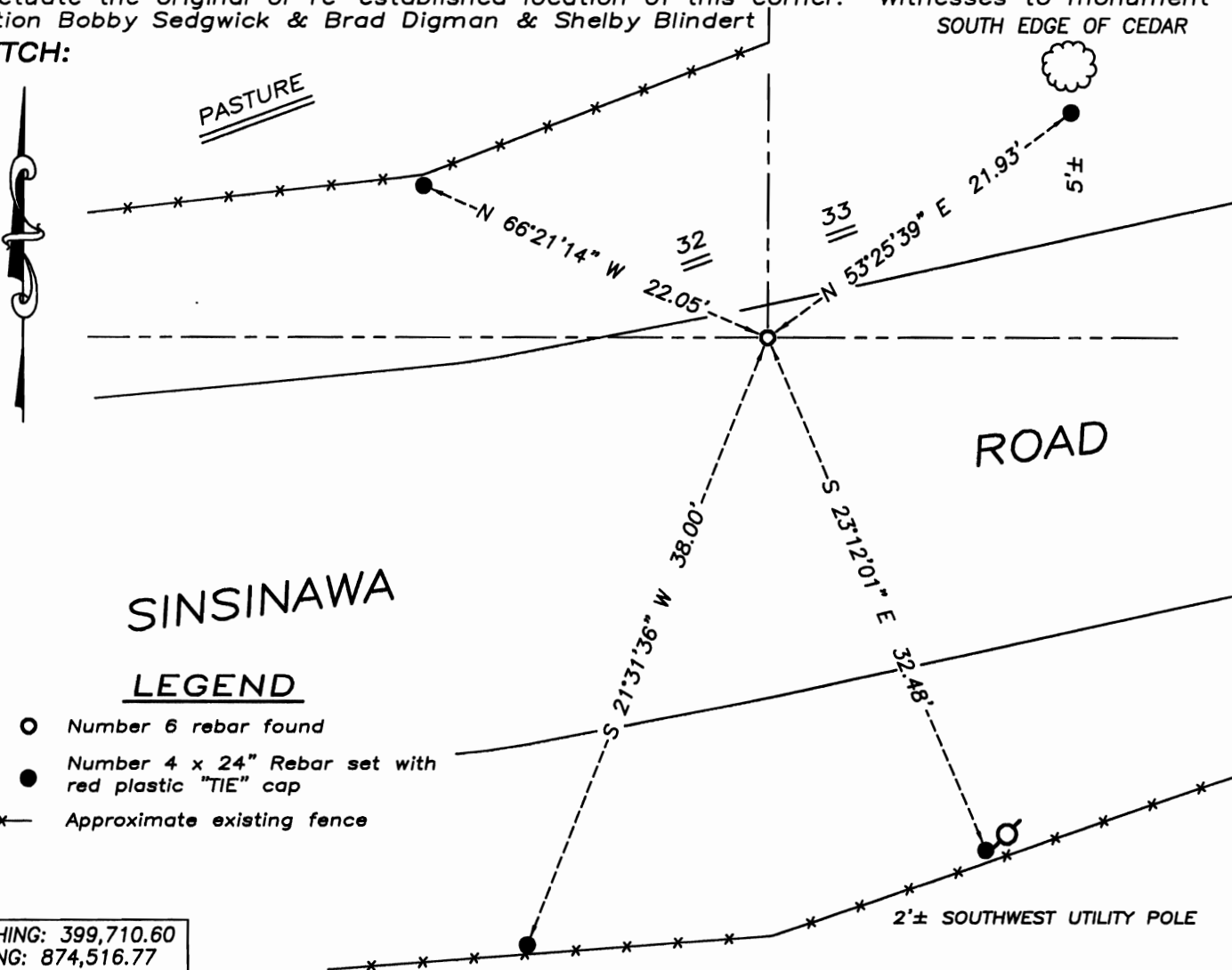
Corner was originally set in the 2nd quarter of 1832 by Lyon. In 1854 Overton tied to the corner. In 1879 Barber set a stone monument at a small cemetery. In 1979 Bradshaw at a #6 iron bar. In 1983 Cejka found a No. 6 rebar. In 1984 Bradshaw measured to the corner. In 1990 Bradshaw tied to the corner again. No other recent record of the corner was found.

CORNER EVIDENCE FOUND

I found the existing No. 6 rebar at this location. I accepted this location after an EDM & GPS methods.

DESCRIPTION OF CORNER AND WITNESS MONUMENTS, references and accessories used to perpetuate the original or re-established location of this corner. Witnesses to monument location Bobby Sedgwick & Brad Digman & Shelby Blindert

SKETCH:



LEGEND

- Number 6 rebar found
- Number 4 x 24" Rebar set with red plastic "TIE" cap
- x— Approximate existing fence

NORTHING: 399,710.60
 EASTING: 874,516.77

NOT TO SCALE

Austin Engineering LLC

4211 HWY 81 E, LANCASTER, WI 53813
 PHONE 608-723-6363 FAX 608-723-6702

JOB NUMBER 08S002
 FIELDBOOK: TDSR, 2910
 G:\T1NR1W\T1NR1W
 H:\TIE\T1NR1W\129

DRAWN BY: SW AUSTIN
 APPROVED: LL AUSTIN