

# UNITED STATES PUBLIC LAND SURVEY CORNER CERTIFICATE OF

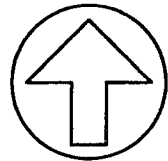
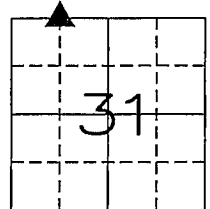
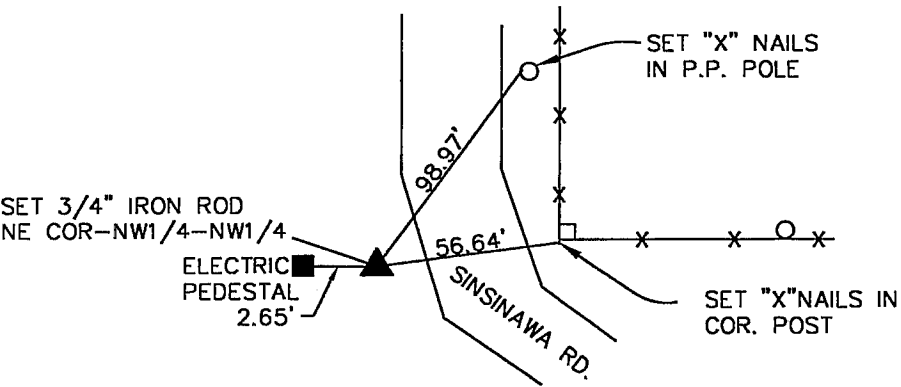
LAND SURVEY MONUMENTS SITUATED IN SECTION 31, TOWNSHIP 1 NORTH, RANGE 1 WEST  
OF THE FOURTH PRINCIPAL MERIDIAN, HAZEL GREEN COUNTY, WISCONSIN.  
PREVIOUSLY RECORDED IN \_\_\_\_\_ IN COUNTY RECORDER'S OFFICE.

(Show reason for preparing this certificate, the evidence and detailed procedures used in establishing the corner positions and monumentation found or placed.)

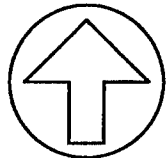
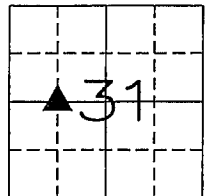
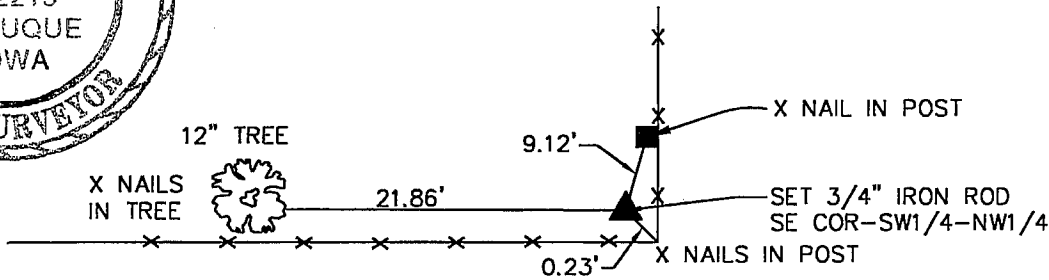
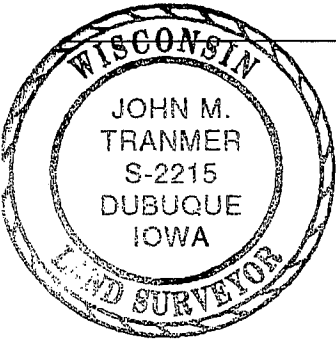
Monument Description and Remarks: \_\_\_\_\_  
 \_\_\_\_\_  
 NE CORNER OF THE NW1/4 OF THE NW1/4 OF SECTION 31, T1N, R1W - SET 3/4" x 24" IRON ROD  
 \_\_\_\_\_  
 SE CORNER OF THE SW1/4 OF THE NW1/4 OF SECTION 31, T1N, R1W - SET 3/4" x 24" IRON ROD  
 \_\_\_\_\_  
 \_\_\_\_\_

## PLAN - VIEW

(Show a minimum of three reference ties to durable physical objects, relevant monuments and physical conditions that will enable recovery of the corner.)



NO SCALE



NO SCALE

I HEREBY CERTIFY THAT THE SURVEY WORK WAS COMPLETED AND THIS CERTIFICATE WAS PREPARED BY ME OR UNDER MY DIRECT PERSONAL SUPERVISION AND THAT I AM A DULY REGISTERED LAND SURVEYOR UNDER THE LAWS OF THE STATE OF WISCONSIN.

*John M. Tranmer*  
 JOHN M. TRANMER REG. NO. S-2215  
 DATE: 7-25-00  
 MY REGISTRATION EXPIRES JAN 31, 2002

### LIST CORNERS TO BE INDEXED

CORNERS	SECTION	TWP	RANGE
NE COR, NW1/4, NW1/4	31	T1N	R1W
SE COR, SW1/4, NW1/4	31	T1N	R1W



**ENGINEERS AND  
SURVEYORS P.C.**

Iowa, Illinois, Wisconsin 4155 Pennsylvania Ave. Guttenberg, IA  
 Dubuque, Ia. 52002 Galena, IL  
 (319) 556-2464 Cuba City, WI

## MONUMENT RECORD

COUNTY: GRANT  
 TOWNSHIP: HAZEL GREEN

DATE: 7-17-00	FIELD BOOK NO. 409	PROJ. NO. 99056-02	INDEX NO.
REVISED:			