

RECEIVED MAR 26 1999

GRANT COUNTY CERTIFIED LAND CORNER

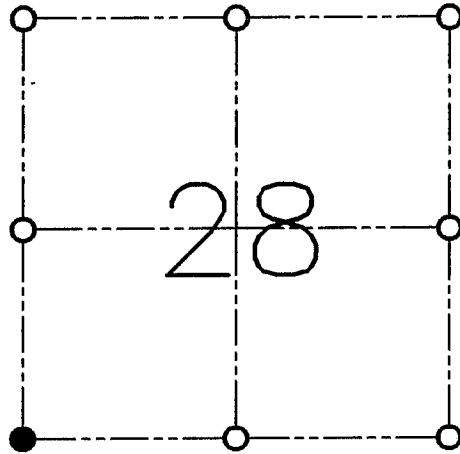
CORNER NO. 109

CERTIFICATE:

I, LARRY L. AUSTIN, DO HEREBY CERTIFY THAT ON THIRD DAY OF FEBRUARY, 1999, I FOUND OCCUPATIONAL EVIDENCE OF THE SOUTHWEST CORNER OF SECTION 28, TOWN 1 NORTH, RANGE 1 WEST OF THE FOURTH PRINCIPAL MERIDIAN, AND I RE-ESTABLISHED SAID CORNER ACCORDING TO THE WISCONSIN STATUTES AS SHOWN AND DESCRIBED HEREON.

DATED THIS THIRD DAY OF FEBRUARY, 1999

Larry L. Austin
LARRY L. AUSTIN S-1903



● = CORNER LOCATION

SOUTHWEST CORNER OF SECTION 28, T 1 N R 1 W TOWN OF HAZEL GREEN

HISTORY OF ORIGINAL CORNER ESTABLISHMENT:

CORNER WAS SET IN 1832 BY LUCIUS LYON.

DESCRIPTION OF CORNER EVIDENCE FOUND:

I FOUND A SPIKE AT AN OCCUPIED FENCE CORNER. I ACCEPTED THIS LOCATION AFTER AN E.D.M. TRAVERSE OF THE AREA.

DESCRIPTION OF CORNER AND WITNESS MONUMENTS, REFERENCES AND ACCESSORIES USED TO PERPETUATE THE ORIGINAL OR RE-ESTABLISHED LOCATION OF THIS CORNER:

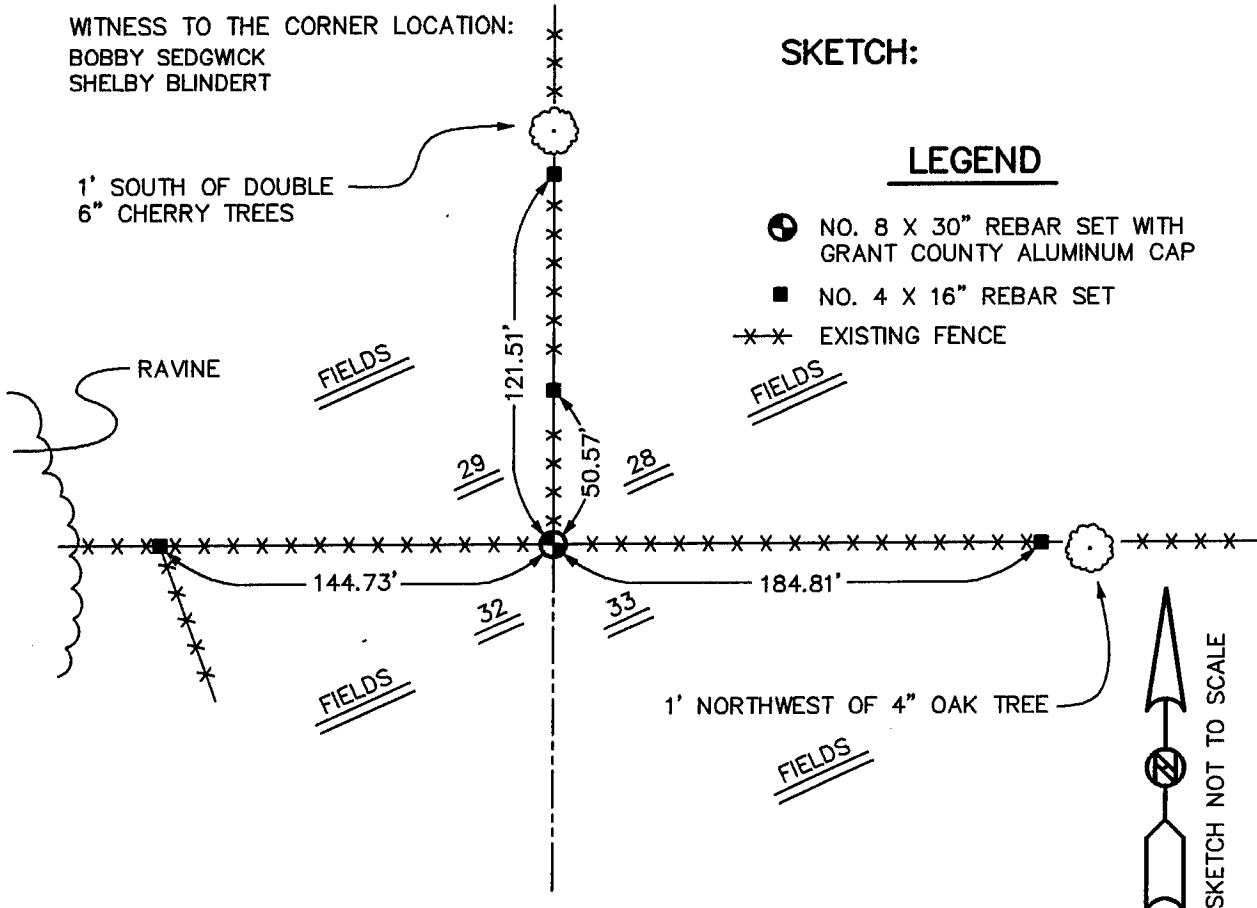
WITNESS TO THE CORNER LOCATION:
BOBBY SEDGWICK
SHELBY BLINDERT

SKETCH:

1' SOUTH OF DOUBLE 6" CHERRY TREES

LEGEND

- NO. 8 X 30" REBAR SET WITH GRANT COUNTY ALUMINUM CAP
- NO. 4 X 16" REBAR SET
- *—*—* EXISTING FENCE



1' NORTHWEST OF 4" OAK TREE

