

# U.S. PUBLIC LAND SURVEY MONUMENT RECORD - GRANT COUNTY, WI

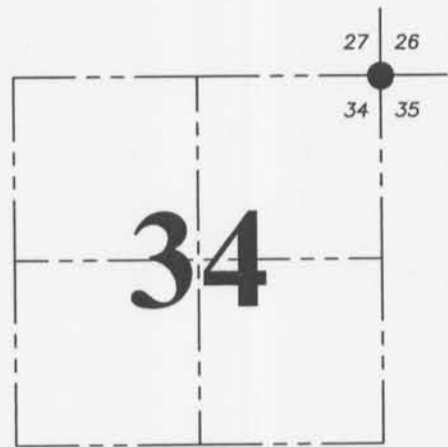
Section 34, Town 1 North Range 1 West, Town of Hazel Green

**CERTIFICATE:**

I, Aaron J. Austin, Wisconsin Professional Land Surveyor, do hereby certify that the corner location on this record was determined by me and/or under my direct supervision and that this U.S. Public Land Survey Monument Record is correct and complete to the best of my knowledge and belief.

Dated this 21st day of July, 2015.

*Aaron J. Austin*  
 Aaron J. Austin, S-2922  
 LAND SURVEYOR  
 WI



● = CORNER LOCATION

**HISTORY OF CORNER ESTABLISHMENT:**

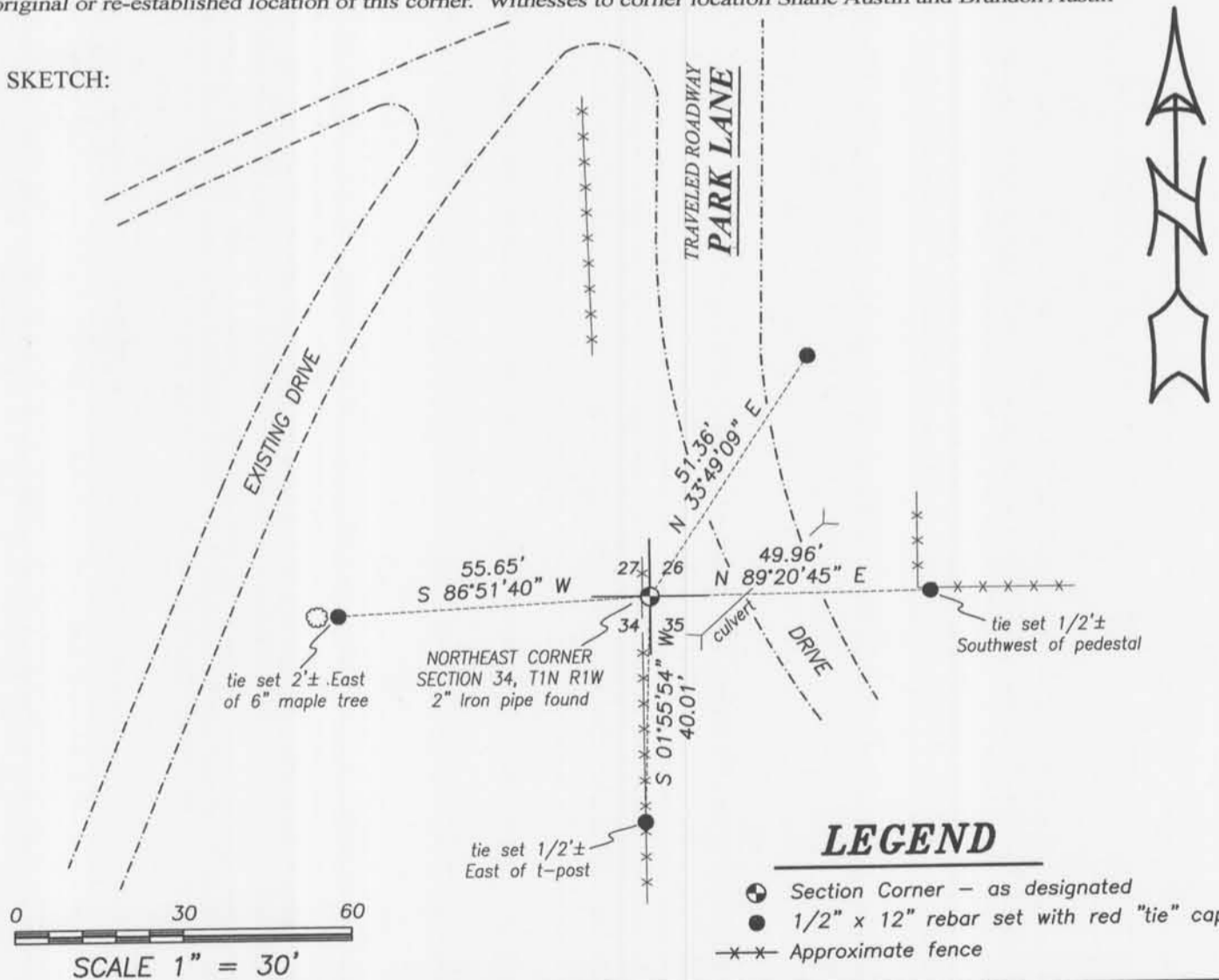
- 1832-Lucius Lyon set the original corner.
  - 1844-Samuel Wiltse tied to the corner on a Survey in Book A, Page 171.
  - 1846-Samuel Wiltse tied to the corner on a Survey in Book B, Page 41.
  - 1874-Overton set a stone at the corner on a Survey in Book C, Page 271.
  - 1986-Bruce Bowden reset the corner on Certified Survey Map No. 247.
  - 1996-Bruce Bowden prepared a U.S Public Land Survey Monument Record.
- Several other surveyors have accepted the monument set by Bowden.

**DESCRIPTION OF CORNER EVIDENCE FOUND:**

I found and accepted the 2" iron pipe. I found 1 witness corner and could not recover the other 3. I set 3 new witness corners as shown hereon and verified this location with E.D.M. and G.P.S. methods.

**DESCRIPTION OF CORNER AND WITNESS MONUMENTS, references and accessories used to perpetuate the original or re-established location of this corner. Witnesses to corner location Shane Austin and Brandon Austin**

**SKETCH:**



**LEGEND**

- Section Corner - as designated
- 1/2" x 12" rebar set with red "tie" cap
- x-x- Approximate fence



**Austin Engineering LLC**  
 austinengineeringllc.com

4211 HWY 81 E, LANCASTER, WI 53813  
 PHONE: 608-723-6363 FAX: 608-723-6702

JOB NO: 15s112  
 H:\CRD\15s112  
 H:\TIE\T1NR1W\105

FIELDBOOK: TDSR  
 DRAWN BY: AJ AUSTIN  
 CREW: SW AUSTIN, BL AUSTIN

# U. S. PUBLIC LAND SURVEY MONUMENT RECORD

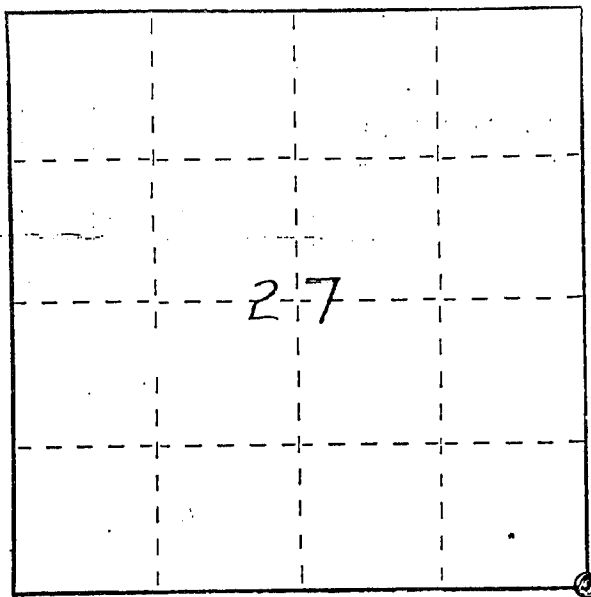
## INSTRUCTIONS :

This record shall show the location of the corner and shall include all of the following nine elements (a through i).

- (a) Identify the corner by reference to the U.S. public land survey system.

● = Corner monument restored.

SE CORNER OF SECTION 27  
 T.1N, R.1W, HAZEL GREEN  
 TWP., GRANT CO., WISC.



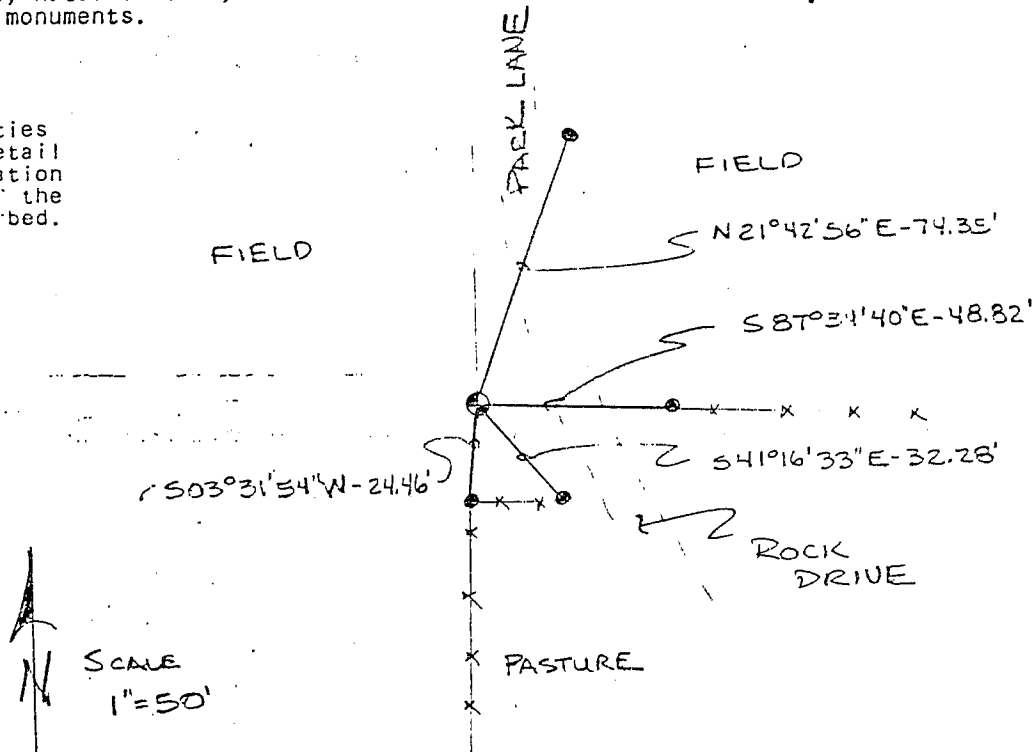
- (b) Describe any record evidence, monument evidence, occupational evidence, testimonial evidence or any other material evidence you considered, and whether the monument was found or placed.

MONUMENT SET FROM EXISTING FIELD EVIDENCE AND  
 VERIFIED BY AN E. D. M. TRAVERSE OF THE AREA

- (c) In the plan view drawing below, provide reference ties to at least 4 witness monuments, or, if the location is within a municipality, to at least 2 witness monuments. (Witness monuments shall be made of concrete, natural stone, iron or other equally durable material.) Describe witness monuments.

- (d) Show a plan view drawing depicting the relevant monuments and reference ties which is sufficient in detail to enable accurate relocation of the corner monument if the corner monument is disturbed. Indicate north.

- ⊙ 2" I. PIPE SET
- 1" I. PIPE



e) Describe any material discrepancy between the location of the corner as restored or reestablished and the location of that corner as previously restored or reestablished by distance and direction. Show the discrepancy on the plan view drawing under (d), above. Show the distances between the corner as previously restored or reestablished and (1) the corner as restored or reestablished, and (2) to at least 2 of the witness monuments shown on the drawing in (d), above.

4/2

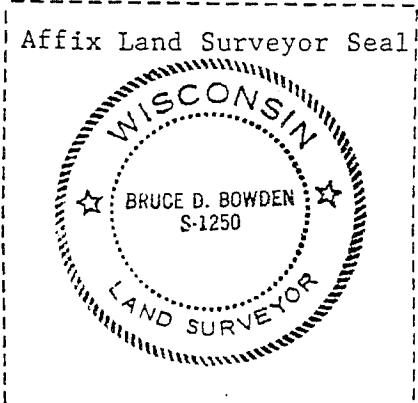
NONE

(f) Was the corner restored through acceptance of (1) an obliterated evidence location, or, (2) a found perpetuated location?

(1) AN OBLITERATED EVIDENCE LOCATION

(g&h) Was the corner reestablished through lost corner proportionate methods? If so, show the method, including the directions and distances to other public land survey corners used as evidence or used for proportioning in determining the corner location?

No.



(i) I, BRUCE D. BOWDEN  
(type or print name) certify that the corner location shown on this record was determined by me or under my direction and control and that this U.S. Public Land Survey Monument Record is correct and complete to the best of my knowledge and belief.

Bruce D. Bowden  
Signature

Nov 11, 1985  
Date