

# U. S. PUBLIC LAND SURVEY MONUMENT RECORD

**INSTRUCTIONS:** This record shall show the location of the corner and shall include all of the following nine elements (a through i).

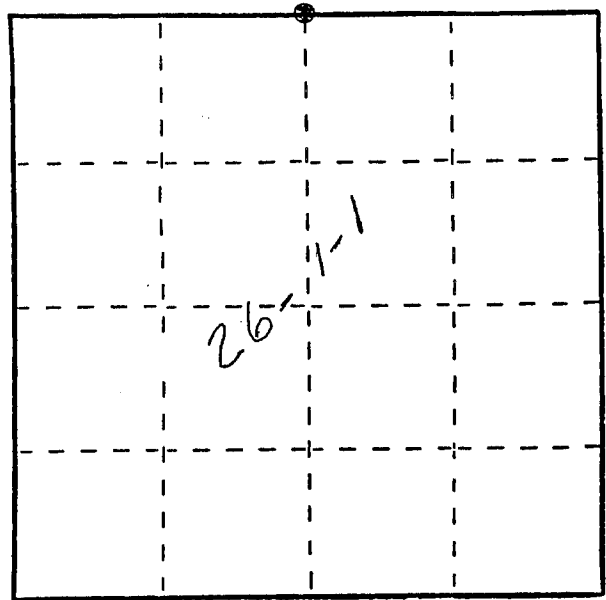
- (a) Identify the corner by reference to the U.S. public land survey system.  
 ⊙ = Corner monument restored.

N1/4 Corner of Section 26

T1N R1W

Town of HAZEL GREEN

Grant County, WI.

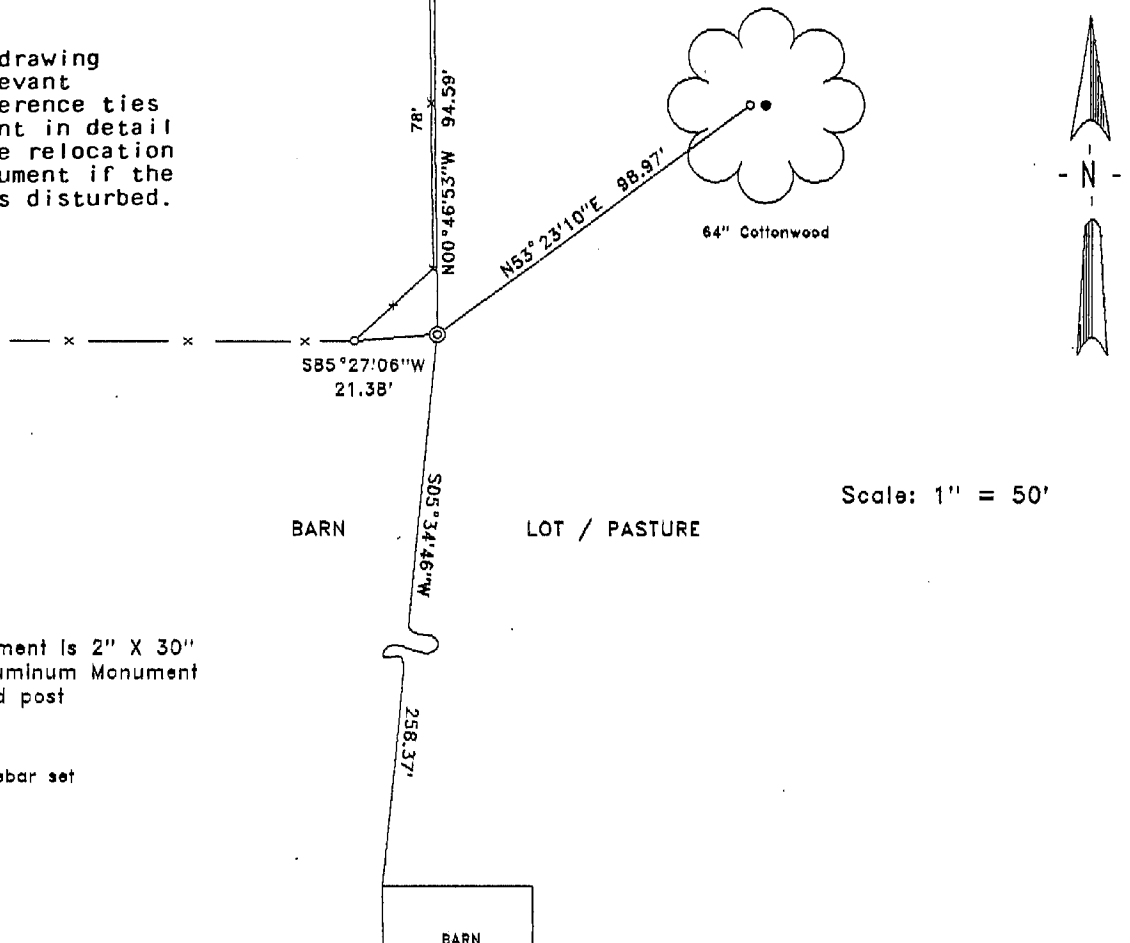


- (b) Describe any record evidence, monument evidence, occupational evidence, testimonial evidence or any other material evidence you considered, and whether the monument was found or placed.

Original corner set by Lucius Lyon in 1832. A resurvey in 1874 by G. M Fall, County Surveyor, shows nothing set at this corner. Retracing C.S.M. #235 (corners missing) would place the corner at a location not in agreement with section measurements to the west and east. I placed the corner by the single proportionate method between NW and NE corners.

- (c) In the plan view drawing below, provide reference ties to at least 4 witness monuments, or, if the location is within a municipality, to at least 2 witness monuments. (Witness monuments shall be made of concrete, natural stone, iron or other equally durable material.) Describe witness monuments.

- (d) Show a plan view drawing depicting the relevant monuments and reference ties which is sufficient in detail to enable accurate relocation of the corner monument if the corner monument is disturbed. Indicate north.



- ⊙ Corner Monument is 2" X 30" Wt. D.O.T. Aluminum Monument with sign and post
- 3/4" X 30" Rebar set

Scale: 1" = 50'

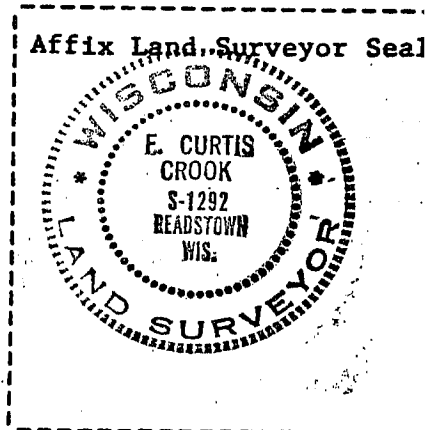
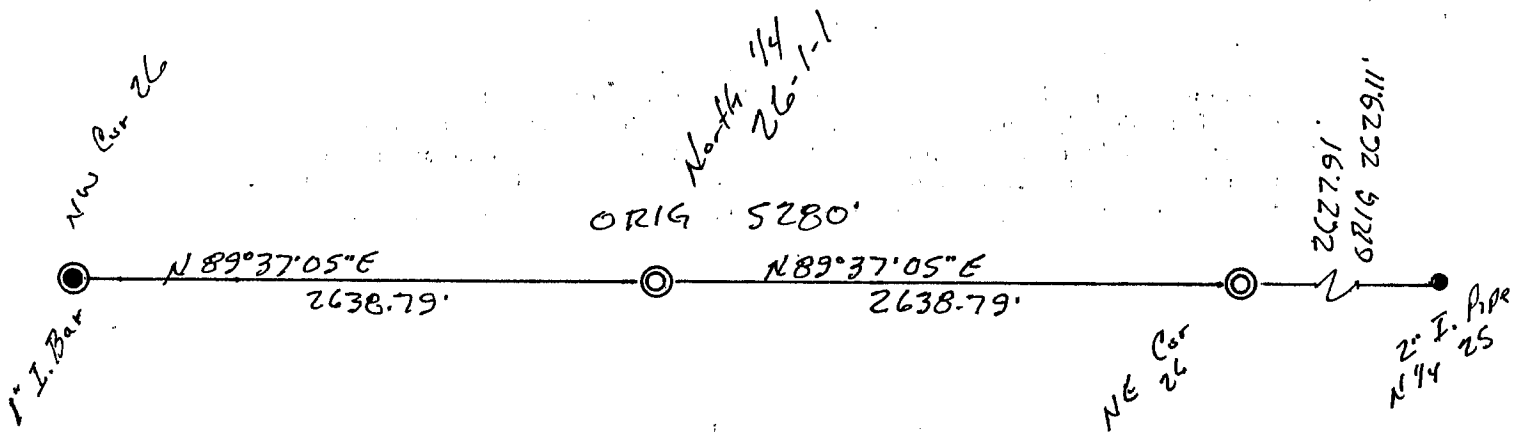
(e) Describe any material discrepancy between the location of the corner as restored or reestablished and the location of that corner as previously restored or reestablished by distance and direction. Show the discrepancy on the plan view drawing under (d), above. Show the distances between the corner as previously restored or reestablished and (1) the corner as restored or reestablished, and (2) to at least 2 of the witness monuments shown on the drawing in (d), above.

NG 1E

(f) Was the corner restored through acceptance of (1) an obliterated evidence location, or, (2) a found perpetuated location?

(1)

(g&h) Was the corner reestablished through lost corner proportionate methods? If so, show the method, including the directions and distances to other public land survey corners used as evidence or used for proportioning in determining the corner location?



(i) F. Curtis Crook  
 (type or print name) certify that the corner location shown on this record was determined by me or under my direction and control and that this U.S. Public Land Survey Monument Record is correct and complete to the best of my knowledge and belief.

F. Curtis Crook 1-15-96

# U. S. PUBLIC LAND SURVEY MONUMENT RECORD

INSTRUCTIONS: This record shall show the location of the corner and shall include all of the following nine elements (a through i).

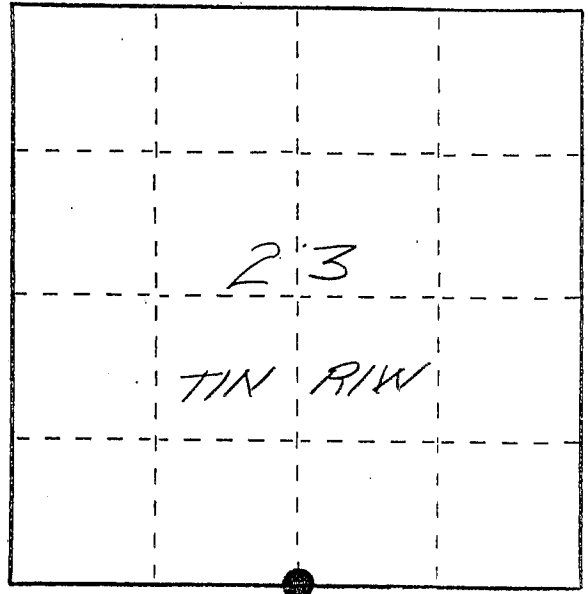
- (a) Identify the corner by reference to the U.S. public land survey system.
- = Corner monument restored.

The South Quarter Corner  
 of Section 23, Town 1 North,  
 Range 1 West, Hazel Green  
 Township, Grant County,  
 Wisconsin.

### GRANT COUNTY COORDINATES

X - 887836.18  
 Y - 410272.68

LAT. 42°32' 10.8047 "N  
 LONG. 90°27' 20.2859 "W



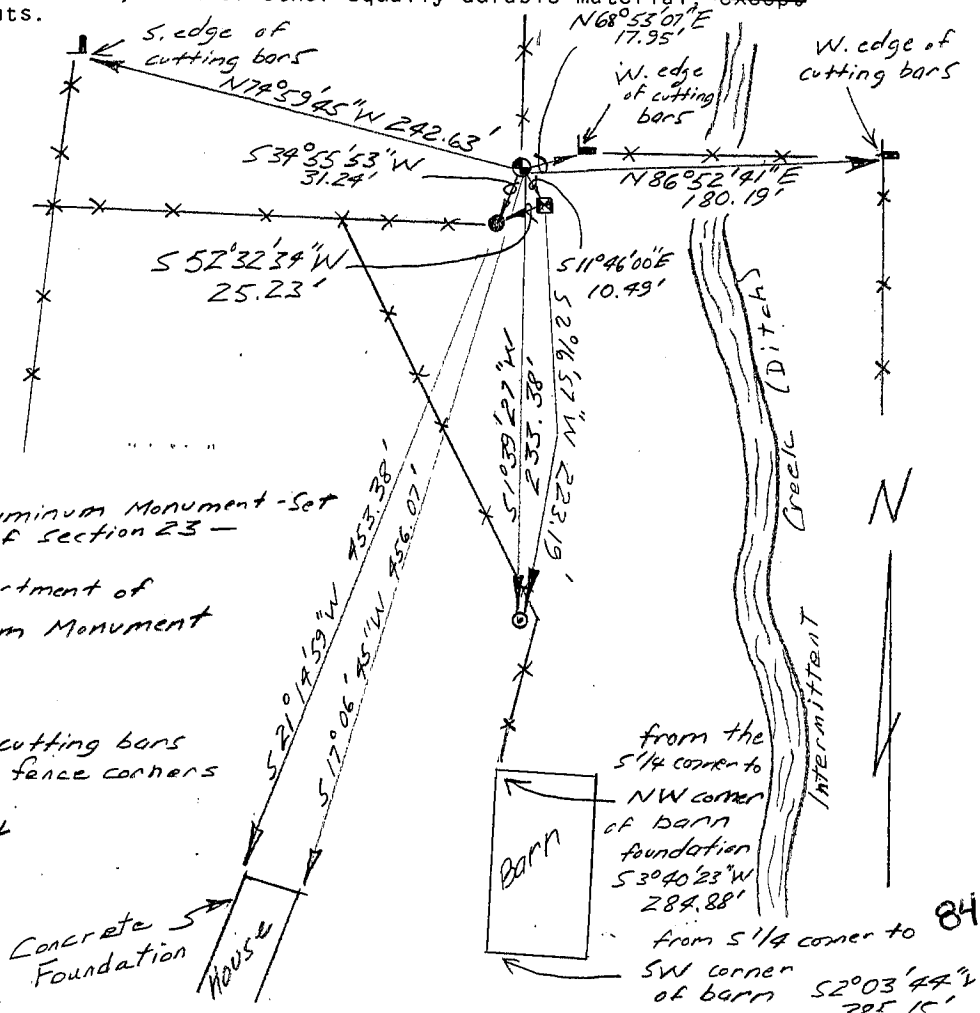
- (b) Describe any record evidence, monument evidence, occupational evidence, testimonial evidence or any other material evidence you considered, and whether the monument was found or placed.

A Wis. Dep't of Transportation Aluminum Monument was found as per WIDOT R/W Project Number 1702-01-21, sheet Number 4.22, dated 5-22-92. However, Certified Survey Map 192 (Recorded Feb. 26, 1982 - Grant Co.) by Carl Schoenhard S-1298 previously established the South Quarter Corner of Section 23. The Schoenhard Survey was retraced and the corner location was thereby established and was verified by proportionate measurements from an EDM and GPS survey of the area. This location was excavated but the 3/4" x 36" iron bar set by Schoenhard was not found. A Berntsen Drivable Aluminum Monument was then set at corner location.

- (c) In the plan view drawing below, provide reference ties to at least 4 witness monuments, or, if the location is within a municipality, to at least 2 witness monuments. (Witness monuments shall be made of concrete, natural stone, iron or other equally durable material, ~~except wood.~~) Describe witness monuments.

- (d) Show a plan view drawing depicting the relevant monuments and reference ties which is sufficient in detail to enable accurate relocation of the corner monument if the corner monument is disturbed. Indicate north.

Scale: 1" ≈ 100'



- Berntsen Drivable Aluminum Monument - Set South 1/4 corner of section 23 -
- - Existing Wisconsin Department of Transportation Aluminum Monument
- - Existing No. 6 rebar
- ⌞ - Existing grader blade cutting bars set in concrete - fence corners
- - No. 6 x 24" rebar - Set

- (e) Describe any material discrepancy between the location of the corner as restored or reestablished and the location of that corner as previously restored or reestablished by distance and direction. Show the discrepancy on the plan view drawing under (d), above. Show the distances between the corner as previously restored or reestablished and (1) the corner as restored or reestablished, and (2) to at least 2 of the witness monuments shown on the drawing in (d), above.

The Wisconsin Dep't of Transportation Monument is  
S 11° 46' 00" E, 10.99' from the Berntsen Drivable Grant  
County Aluminum set as shown.

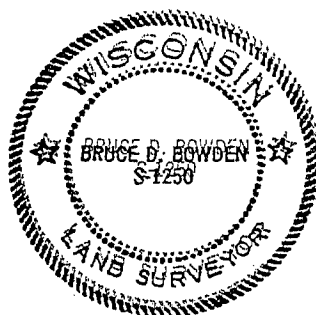
- (f) Was the corner restored through acceptance of (1) an obliterated evidence location, or, (2) a found perpetuated location?

2.) A found perpetuated location

- (g&h) Was the corner reestablished through lost corner proportionate methods? If so, show the method, including the directions and distances to other public land survey corners used as evidence or used for proportioning in determining the corner location?

No.

Affix Land Surveyor Seal



I, BRUCE D. BOWDEN,

(type or print name) certify that the corner location shown on this record was determined by me or under my direction and control and that this U.S. Public Land Survey Monument Record is correct and complete to the best of my knowledge and belief.

Bruce D. Bowden  
Signature

May 22, 1996  
Date