

U. S. PUBLIC LAND SURVEY MONUMENT RECORD

INSTRUCTIONS: This record shall show the location of the corner and shall include all of the following nine elements (a through i).

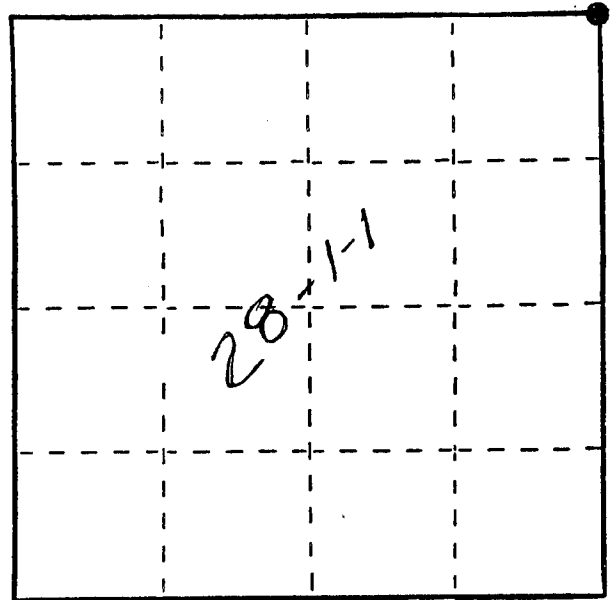
- (a) Identify the corner by reference to the U.S. public land survey system.
 ● = Corner monument restored.

NE Corner of Section 28

T1N R1W

Town of HAZEL GREEN

Grant County, Wi.

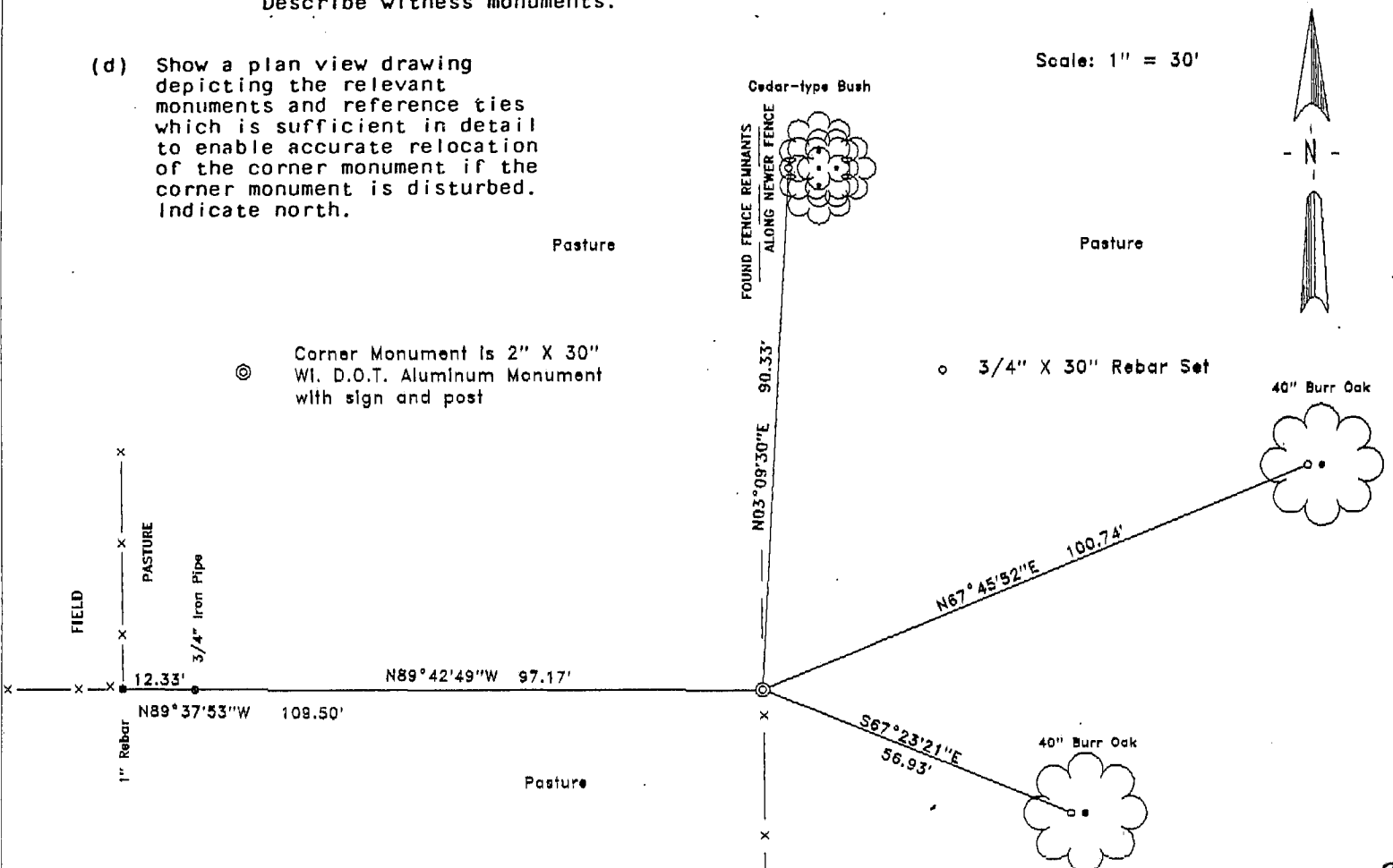


- (b) Describe any record evidence, monument evidence, occupational evidence, testimonial evidence or any other material evidence you considered, and whether the monument was found or placed.

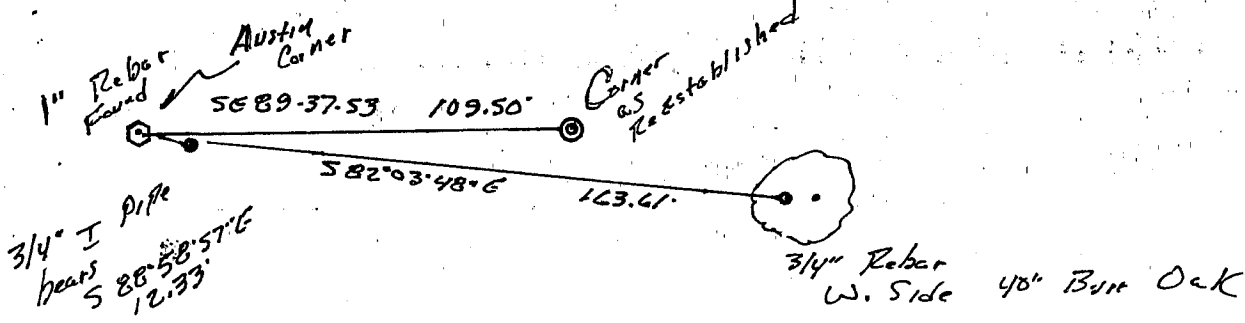
Original corner set by Lucius Lyon in 1832. Found no record of future remonumentation until Larry Austin placed a 1" Iron bar in 1989. The bar was placed at a fence 110' to the west of where I found some buried remnants of an old fence coming from the North. The fence corner Mr. Austin used is possibly a field fence; the measurements to the East and West to the adjacent 1/4 corners support my location.

- (c) In the plan view drawing below, provide reference ties to at least 4 witness monuments, or, if the location is within a municipality, to at least 2 witness monuments. (Witness monuments shall be made of concrete, natural stone, iron or other equally durable material.) Describe witness monuments.

- (d) Show a plan view drawing depicting the relevant monuments and reference ties which is sufficient in detail to enable accurate relocation of the corner monument if the corner monument is disturbed. Indicate north.



(e) Describe any material discrepancy between the location of the corner as restored or reestablished and the location of that corner as previously restored or reestablished by distance and direction. Show the discrepancy on the plan view drawing under (d), above. Show the distances between the corner as previously restored or reestablished and (1) the corner as restored or reestablished, and (2) to at least 2 of the witness monuments shown on the drawing in (d), above.

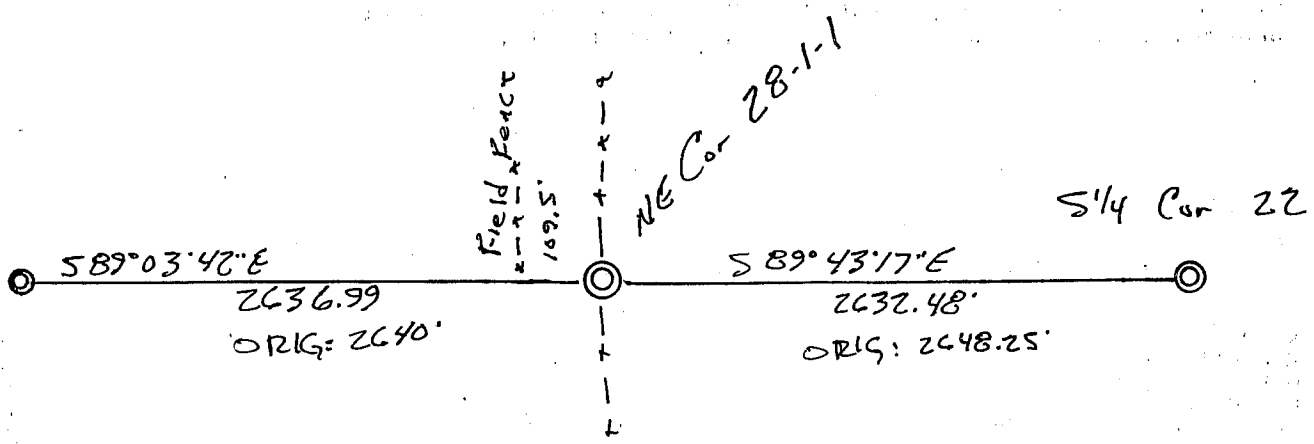


(f) Was the corner restored through acceptance of (1) an obliterated evidence location, or, (2) a found perpetuated location?

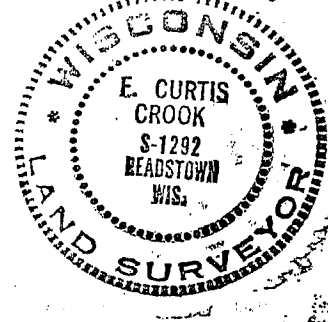
(1)

(g&h) Was the corner reestablished through lost corner proportionate methods? If so, show the method, including the directions and distances to other public land survey corners used as evidence or used for proportioning in determining the corner location?

No



Affix Land Surveyor Seal



(i) I, F. Curtis Crook (type or print name) certify that the corner location shown on this record was determined by me or under my direction and control and that this U.S. Public Land Survey Monument Record is correct and complete to the best of my knowledge and belief.

F. Curtis Crook 1-15-96

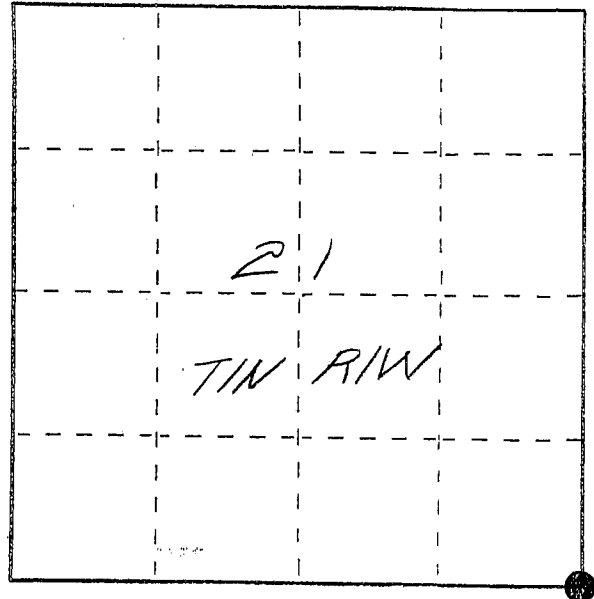
U. S. PUBLIC LAND SURVEY MONUMENT RECORD

INSTRUCTIONS: This record shall show the location of the corner and shall include all of the following nine elements (a through i).

(a) Identify the corner by reference to the U.S. public land survey system.

● = Corner monument restored.

The Southeast Corner of
Section 21, Town 1 North,
Range 1 West, Hazel
Green Township, Grant
County, Wisconsin



GRANT COUNTY COORDINATES

X - 879910.93
Y - 410224.91

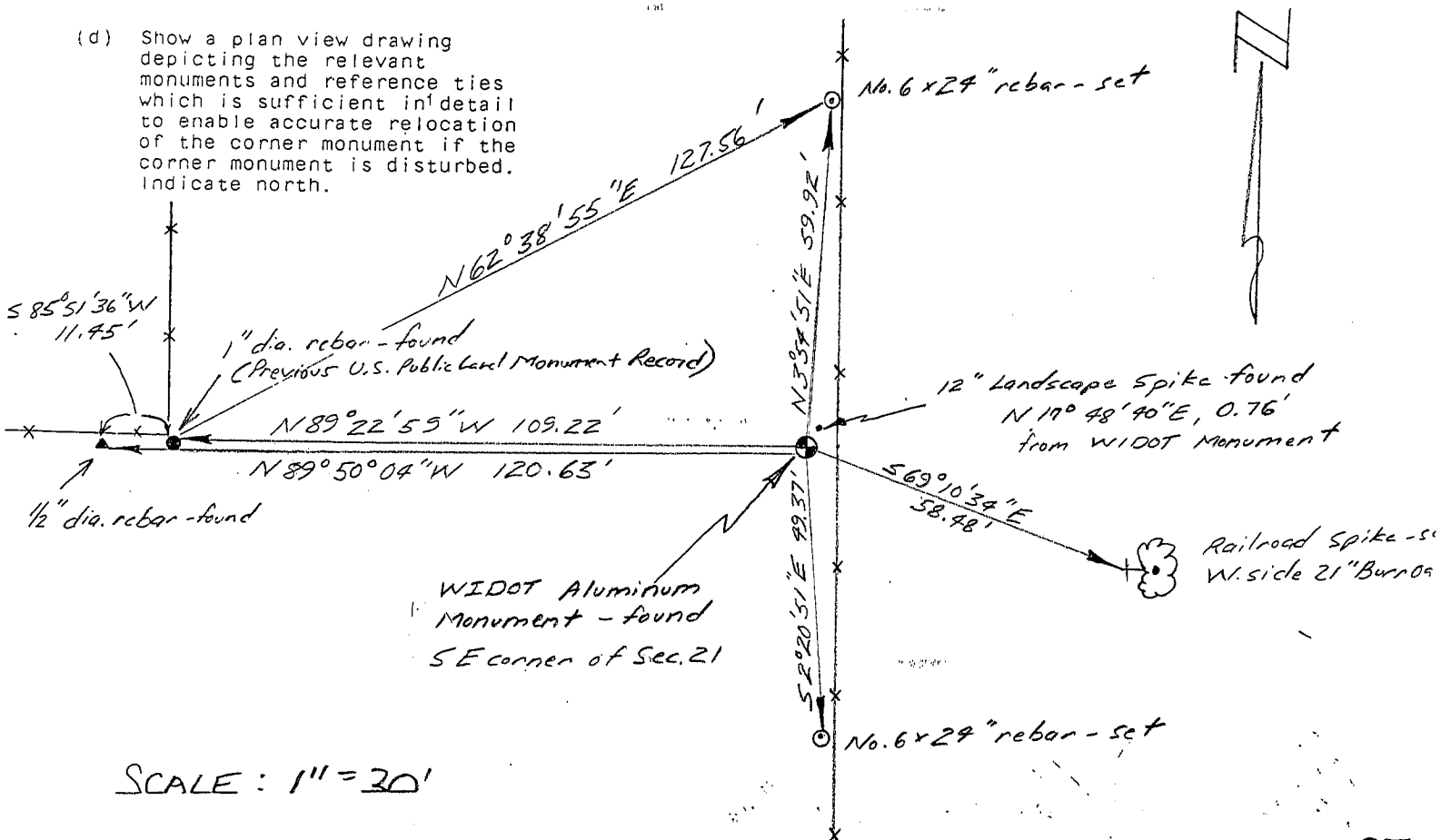
LAT. 42° 32' 10.8897 " N
LONG. 90° 29' 5.8989 " W

(b) Describe any record evidence, monument evidence, occupation evidence, testimonial evidence or any other material evidence you considered, and whether the monument was found or placed.

A Wisconsin Department of Transportation Aluminum Monument was found (as per R/W project # 1702-01-21, sheet 7.20, 5-22-92) and accepted as the corner following verification by proportionate measurements from a GPS and EDM survey of the area. A 1" dia. rebar was found at a fence corner N/W as per previous U.S. Public Land Survey Monument record dated 9-20-1990. This location was not accepted as it places the corner too far to the West.

(c) In the plan view drawing below, provide reference ties to at least 4 witness monuments, or, if the location is within a municipality, to at least 2 witness monuments. (Witness monuments shall be made of concrete, natural stone, iron or other equally durable material, ~~except~~ wood.) Describe witness monuments.

(d) Show a plan view drawing depicting the relevant monuments and reference ties which is sufficient in detail to enable accurate relocation of the corner monument if the corner monument is disturbed. Indicate north.



SCALE: 1" = 30'

- (e) Describe any material discrepancy between the location of the corner as restored or reestablished and the location of that corner as previously restored or reestablished by distance and direction. Show the discrepancy on the plan view drawing under (d), above. Show the distances between the corner as previously restored or reestablished and (1) the corner as restored or reestablished, and (2) to at least 2 of the witness monuments shown on the drawing in (d), above.

The 1" dia. rebar shown on the Previous U.S. Public Land Survey Monument Record (dated 9-20-1990) is $N 89^{\circ} 22' 59'' W, 109.22'$ from the found and accepted Wisconsin Dep't of Transportation Aluminum Monument.

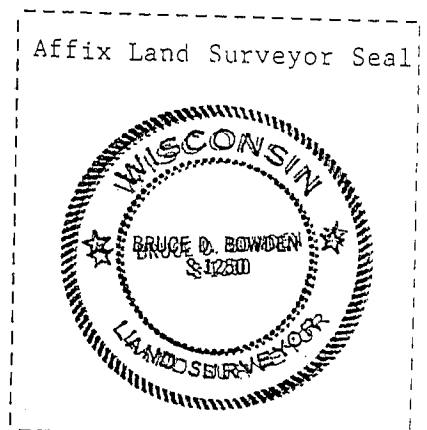
- (f) Was the corner restored through acceptance of (1) an obliterated evidence location, or, (2) a found perpetuated location?

2) A found perpetuated location

- (g&h) Was the corner reestablished through lost corner proportionate methods? If so, show the method, including the directions and distances to other public land survey corners used as evidence or used for proportioning in determining the corner location?

No

- (i) I, BRUCE D. BOWDEN,
(type or print name) certify that the corner location shown on this record was determined by me or under my direction and control and that this U.S. Public Land Survey Monument Record is correct and complete to the best of my knowledge and belief.



Signature

Date

Bruce D. Bowden May 22, 1996

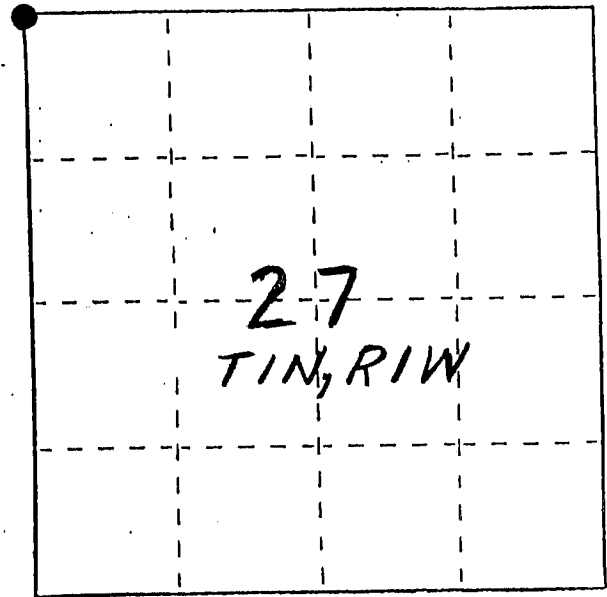
U. S. PUBLIC LAND SURVEY MONUMENT RECORD

INSTRUCTIONS:

This record shall show the location of the corner and shall include all of the following nine elements (a through i).

- (a) Identify the corner by reference to the U.S. public land survey system.
- = Corner monument restored.

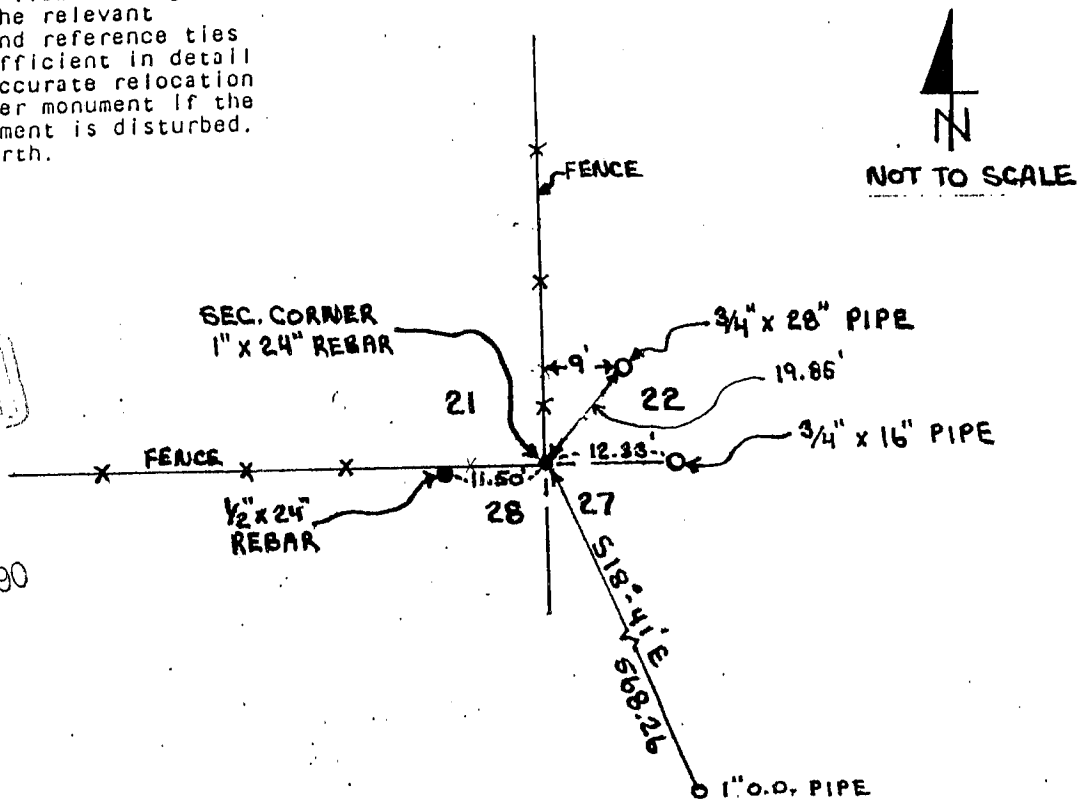
NW CORNER, SECTION 27,
T.1N, R.1W, HAZEL GREEN
TWP., GRANT CO., WI



- (b) Describe any record evidence, monument evidence, occupational evidence, testimonial evidence or any other material evidence you considered, and whether the monument was found or placed.
MONUMENT PLACED BASED ON OCCUPATIONAL EVIDENCE
& VERIFIED BY EDM TRAVERSE

- (c) In the plan view drawing below, provide reference ties to at least 4 witness monuments, or, if the location is within a municipality, to at least 2 witness monuments. (Witness monuments shall be made of concrete, natural stone, iron or other equally durable material.) Describe witness monuments.

- (d) Show a plan view drawing depicting the relevant monuments and reference ties which is sufficient in detail to enable accurate relocation of the corner monument if the corner monument is disturbed. Indicate north.



GRANT COUNTY CLERK
RECEIVED

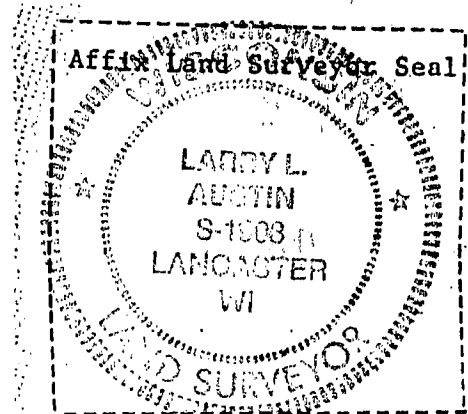
SEP 20 1990

1287

(e) Describe any material discrepancy between the location of the corner as restored or reestablished and the location of that corner as previously restored or reestablished by distance and direction. Show the discrepancy on the plan view drawing under (d), above. Show the distances between the corner as previously restored or reestablished and (1) the corner as restored or reestablished, and (2) to at least 2 of the witness monuments shown on the drawing in (d), above. *NONE*

(f) Was the corner restored through acceptance of (1) an obliterated evidence location, or, (2) a found perpetuated location? *(2) FOUND PERPETUATED LOCATION*

(g&h) Was the corner reestablished through lost corner proportionate methods? If so, show the method, including the directions and distances to other public land survey corners used as evidence or used for proportioning in determining the corner location? *No*



(i) I, LARRY L. AUSTIN
(type or print name) certify that the corner location shown on this record was determined by me or under my direction and control and that this U.S. Public Land Survey Monument Record is correct and complete to the best of my knowledge and belief.

L *L L A* *10/10/89*