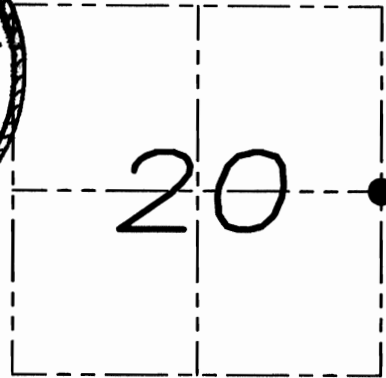


U.S. PUBLIC LAND SURVEY MONUMENT RECORD

Section 20, Town 1 North Range 1 West, Town of Hazel Green, Grant County, Wisconsin

CERTIFICATE

I, Larry L. Austin, do hereby certify that the corner location on this record was determined by me and/or under my direct supervision and that this U.S. public land survey monument record is correct and complete to the best of my knowledge and belief.



● = CORNER LOCATION

Larry L. Austin
Larry L. Austin, S-1903 6-8-09 date

HISTORY OF CORNER

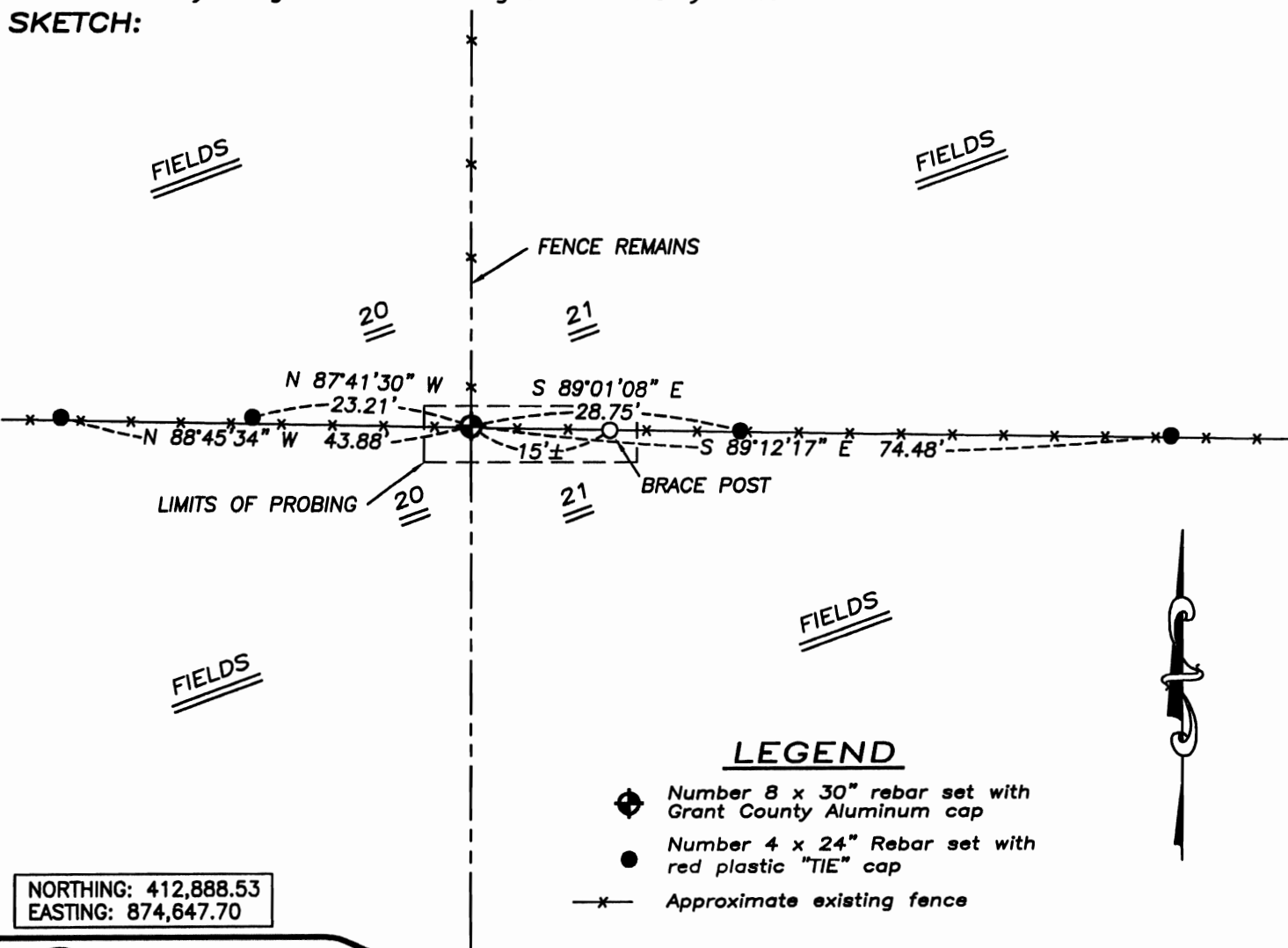
Corner was originally set in the 2nd quarter of 1832 by Lyon. In 1854 Dickey tied to the corner with no mention of monument. In 1872 McFall tied to the corner. No other recent record of the corner was found.

CORNER EVIDENCE FOUND

I was unable to find any evidence of the location of the original corner. I reset the corner at a brace post with evidence of fence remains heading North. Verified this location using EDM & GPS methods.

DESCRIPTION OF CORNER AND WITNESS MONUMENTS, references and accessories used to perpetuate the original or re-established location of this corner. Witnesses to monument location Bobby Sedgwick & Brad Dignan & Shelby Blindert

SKETCH:



LEGEND

- ◆ Number 8 x 30" rebar set with Grant County Aluminum cap
- Number 4 x 24" Rebar set with red plastic "TIE" cap
- x- Approximate existing fence

NORTHING: 412,888.53
EASTING: 874,647.70

NOT TO SCALE

Austin Engineering LLC

4211 HWY 81 E, LANCASTER, WI 53813
PHONE 608-723-8363 FAX 608-723-6702

JOB NUMBER 08S002
FIELDBOOK: TDSR, 2910
G:\T1NR1W\T1NR1W
H:\TIE\T1NR1W\76

DRAWN BY: SW AUSTIN
APPROVED: LL AUSTIN