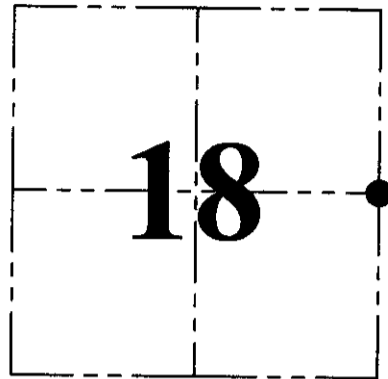
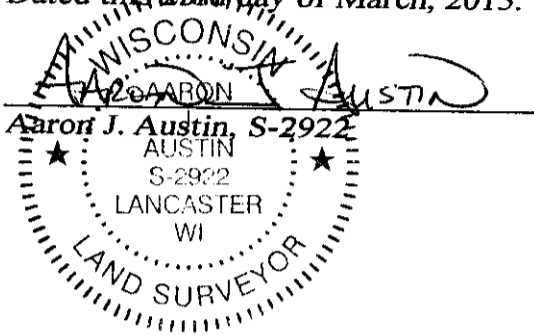


U.S. PUBLIC LAND SURVEY MONUMENT RECORD - GRANT COUNTY, WI
 Section 18, Town 1 North Range 1 West, Town of Hazel Green

CERTIFICATE:

I, Aaron J. Austin, Professional Wisconsin Land Surveyor, do hereby certify that the corner location on this record was determined by me and/or under my direct supervision and that this U.S. Public Land Survey Monument Record is correct and complete to the best of my knowledge and belief.

Dated this 29th day of March, 2015.



● = CORNER LOCATION

HISTORY OF CORNER ESTABLISHMENT:

1832-Lucius Lyon set original corner.
 1993-David Burbach reset the corner and prepared
 a U.S. Public Land Survey Monument Record.

DESCRIPTION OF CORNER EVIDENCE FOUND:

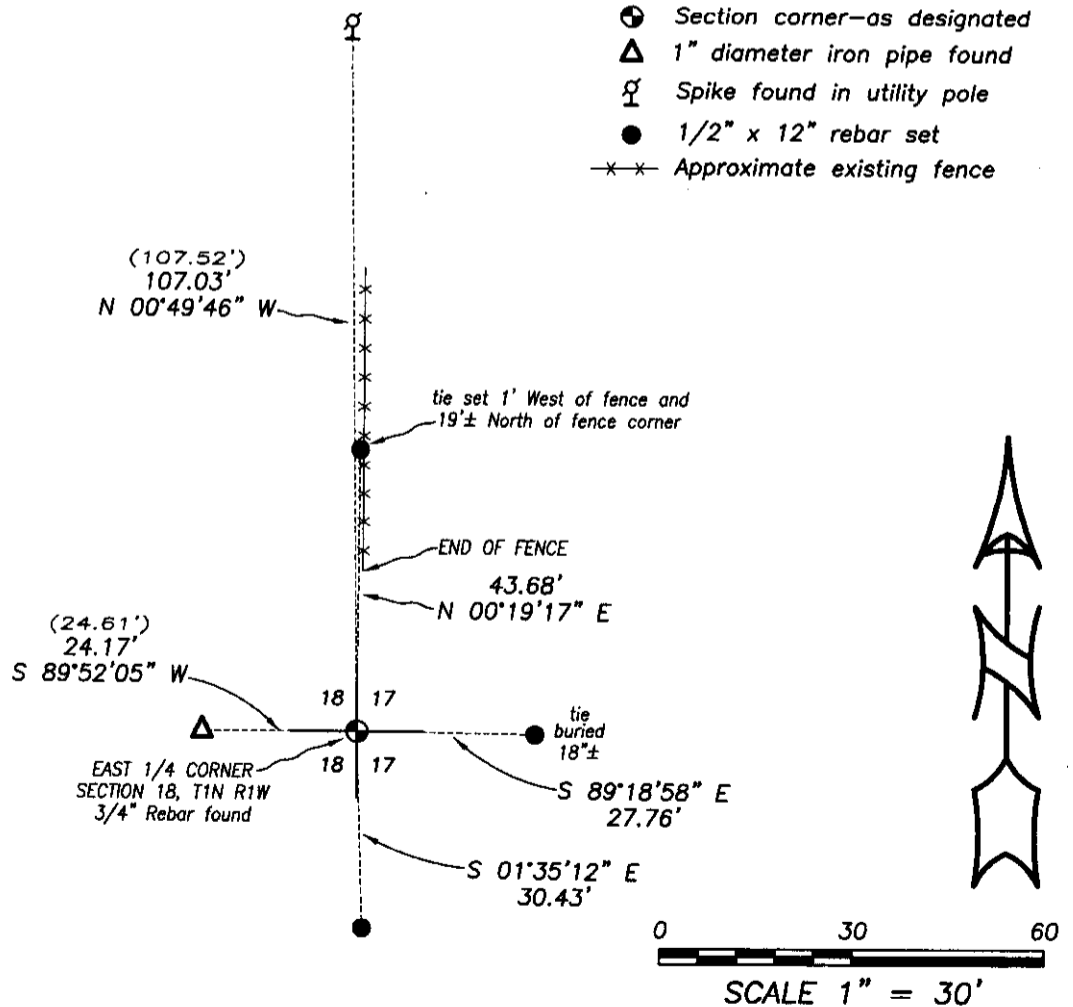
I found a 3/4" rebar as established by David Burbach. Two witness monuments were unable to be recovered. I set three new witness corners and verified this location with G.P.S. methods.

DESCRIPTION OF CORNER AND WITNESS MONUMENTS, references and accessories used to perpetuate the original or re-established location of this corner. Witnesses to corner location Shane Austin.

SKETCH:

LEGEND

- ⊕ Section corner—as designated
- △ 1" diameter iron pipe found
- ⊕ Spike found in utility pole
- 1/2" x 12" rebar set
- x-x- Approximate existing fence



4211 HWY 81 E, LANCASTER, WI 53813
 PHONE: 608-723-6363 FAX: 608-723-6702

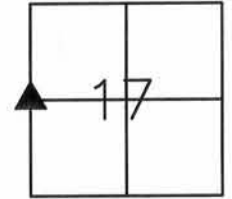
JOB NO: 15S015
 H:\CRD\15s015-RUNDE
 H:\TIE\T1NR1W\55

FIELDBOOK: TDSR
 DRAWN BY: AJ AUSTIN
 CREW: SW AUSTIN

UNITED STATES PUBLIC LAND SURVEY MONUMENT RECORD
 GRANT COUNTY, WISCONSIN
 SECTION 17, TOWNSHIP 1 NORTH, RANGE 1 WEST OF THE 4TH P.M.

HISTORY OF CORNER:

ORIGINAL CORNER SET IN 1832 BY LUCIUS LYON. IN 1993, DAVID BURBACH PLACED A 3/4" REBAR AT CORNER LOCATION.



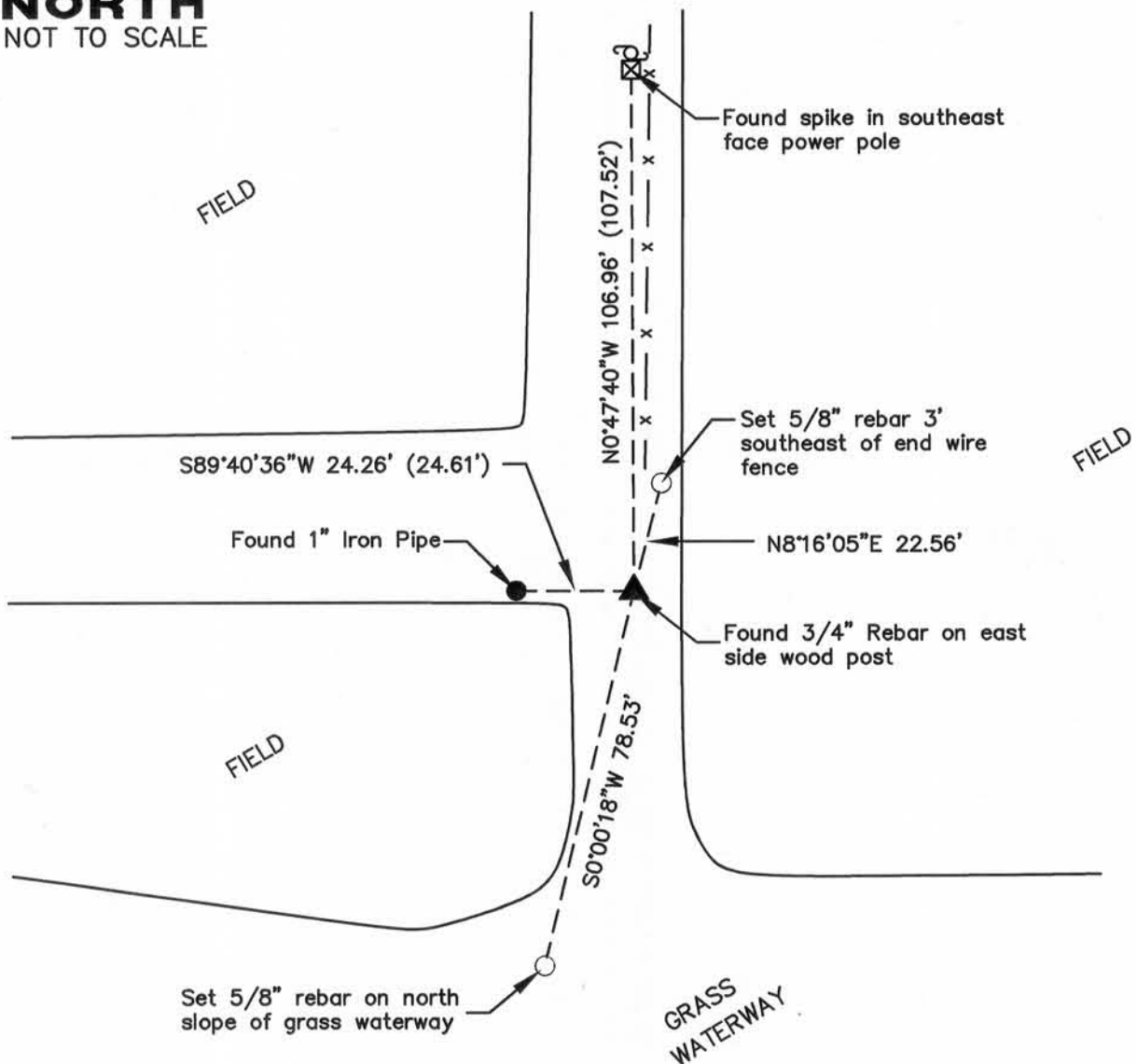
WEST 1/4 CORNER
 SEC 17, T1N, R1W
 TOWN OF HAZEL GREEN
 CORNER NUMBER 55

DESCRIPTION OF CORNER AND EVIDENCE FOUND:

FOUND 3/4" REBAR IN GOOD CONDITION AS DESCRIBED IN 1993 BURBACH MONUMENT RECORD. TWO SWING TIES DESTROYED AND REMAINING TWO IN FAIR CONDITION. ACCEPTED CORNER, REPAIRED REMAINING TWO SWING TIES, AND PLACED NEW SWING TIES AS SHOWN BELOW.



PLAN - VIEW



I, Craig L. Geiser certify that the corner location shown on this record was determined by me or under my direction and control and that this U.S. Public Land Survey Monument Record is correct and complete to the best of my knowledge and belief.

Craig L. Geiser 12-15-15
 Signature Date

IIW, P.C.		ARCHITECTURE	
 www.iwengr.com • 800.556.4491		CIVIL ENGINEERING	
		CONSTRUCTION SERVICES	
DRAWN JJB		FIELD BK. 422	
CHECKED CLG		PROJ. NO. 14760	
DATE 11-17-15		SHEET 1 of 1	
P: \14\700\760\DRAWINGS\SURVEY\14760 2015			
CORNER CERTS			

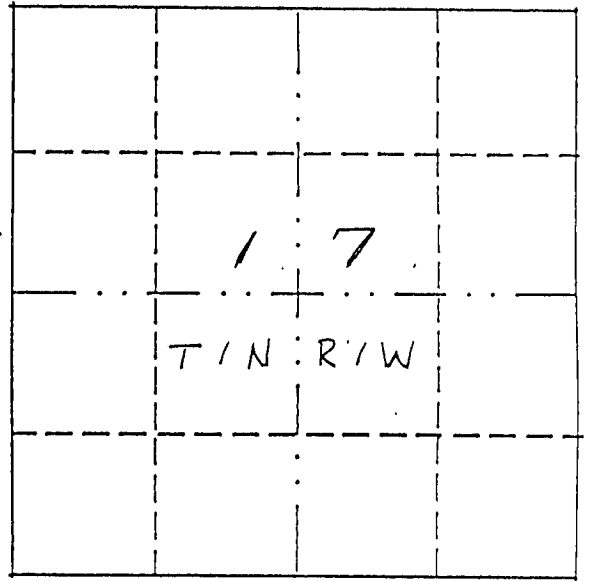
U.S. PUBLIC LAND SURVEY MONUMENT RECORD

THIS RECORD SHALL SHOW THE LOCATION OF THE CORNER AND SHALL INCLUDE ALL OF THE FOLLOWING NINE ELEMENTS (A THROUGH I).

JUN 16 1993

(a) Identify the corner by reference to the U.S. public land survey system.

WEST 1/4 CORNER
SECTION 17, T1N-R1W
HAZEL GREEN TWP.
GRANT COUNTY, WI



● = corner monument restored.

(b) Describe any record evidence, monument evidence, occupational evidence, testimonial evidence or any other material evidence you considered, and whether the monument was found or placed.

Monument was placed at existing fence intersection and verified by EDM traverse of area.

(c) In the plan view drawing below, provide reference ties to at least four witness monuments, or, if the location is within a municipality, to at least two witness monuments. (Witness monuments shall be made of concrete, natural stone, iron or other equally durable material.) Describe witness monuments.

(d) Show a plan view drawing depicting the relevant monuments and reference ties which is sufficient in detail to enable accurate relocation of the corner monument if the corner monument is disturbed. Indicate north.



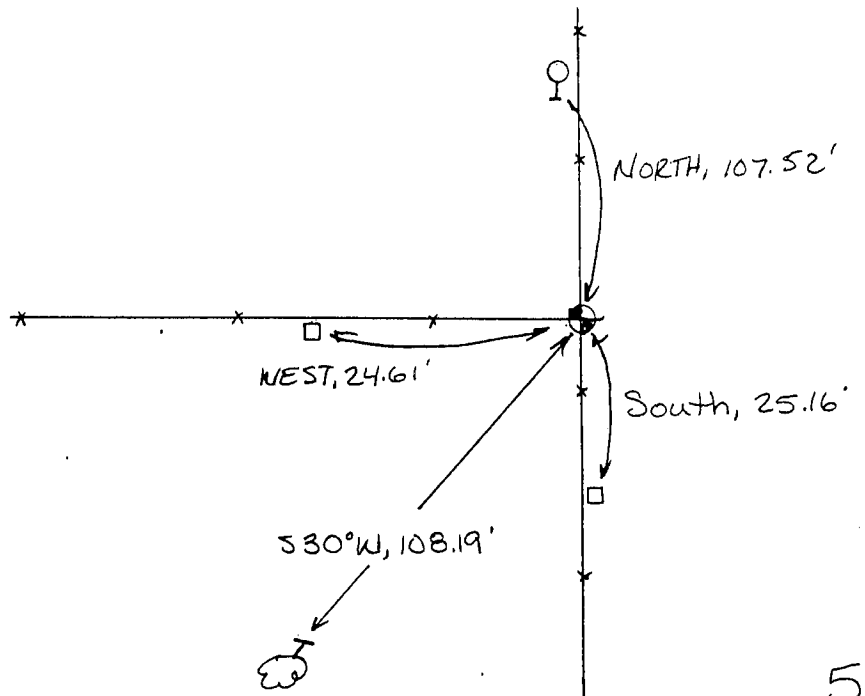
NOT TO SCALE

⊕ = Section Corner Mon.
Set 3/4" x 24" Rebar

□ = Set 1" Pipe

⊙ = Set spike in Power Pole

⊙ = Set Spike in tree



(e) Describe any material discrepancy between the location of the corner as restored or reestablished and the location of that corner as previously restored or reestablished by distance and direction. Show the discrepancy on the plan view drawing under (d), above. Show the distances between the corner as previously restored or reestablished and (1) the corner as restored or reestablished, and (2) to at least two of the witness monuments shown on the drawing in (d), above.

NONE.

(f) Was the corner restored through acceptance of (1) an obliterated evidence location, or (2) a found perpetuated location?

1.

(g) & (h) Was the corner reestablished through lost corner proportionate methods? If so, show the method, including the directions and distances to other public land survey corners used as evidence or used for proportioning in determining the corner location?

No.

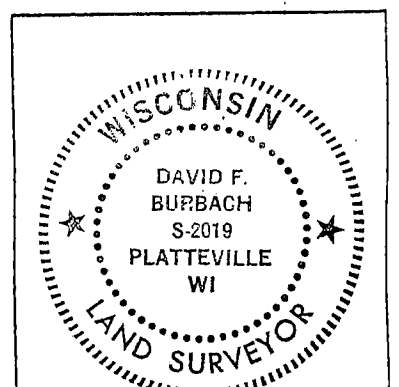
(i) I, DAVID F. BURBACH

(type or print name) certify that the corner location shown on this record was determined by me or under my direction and control and that this U.S. Public Land Survey Monument Record is correct and complete to the best of my knowledge and belief.

David F. Burbach

6/3/93

Date



affix land surveyor seal