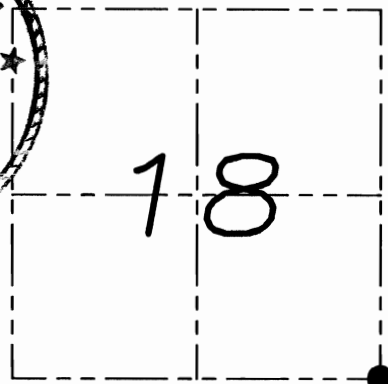


U.S. PUBLIC LAND SURVEY MONUMENT RECORD

Section 18, Town 1 North Range 1 West, Town of Hazel Green, Grant County, Wisconsin

CERTIFICATE

I, Larry L. Austin, do hereby certify that the corner location on this record was determined by me and/or under my direct supervision and that this U.S. public land survey monument record is correct and complete to the best of my knowledge and belief.



● = CORNER LOCATION

Larry L. Austin
Larry L. Austin, S-1903

6.8.09
date

HISTORY OF CORNER

Corner was originally set in the 2nd quarter of 1832 by Lyon. In 1844 Wiltse tied to the corner. In 1854 Dickey tied to the corner. In 1872 McFall tied to the corner. In 1879 Barber tied to the corner and found an old stone. No other recent record of the corner was found.

CORNER EVIDENCE FOUND

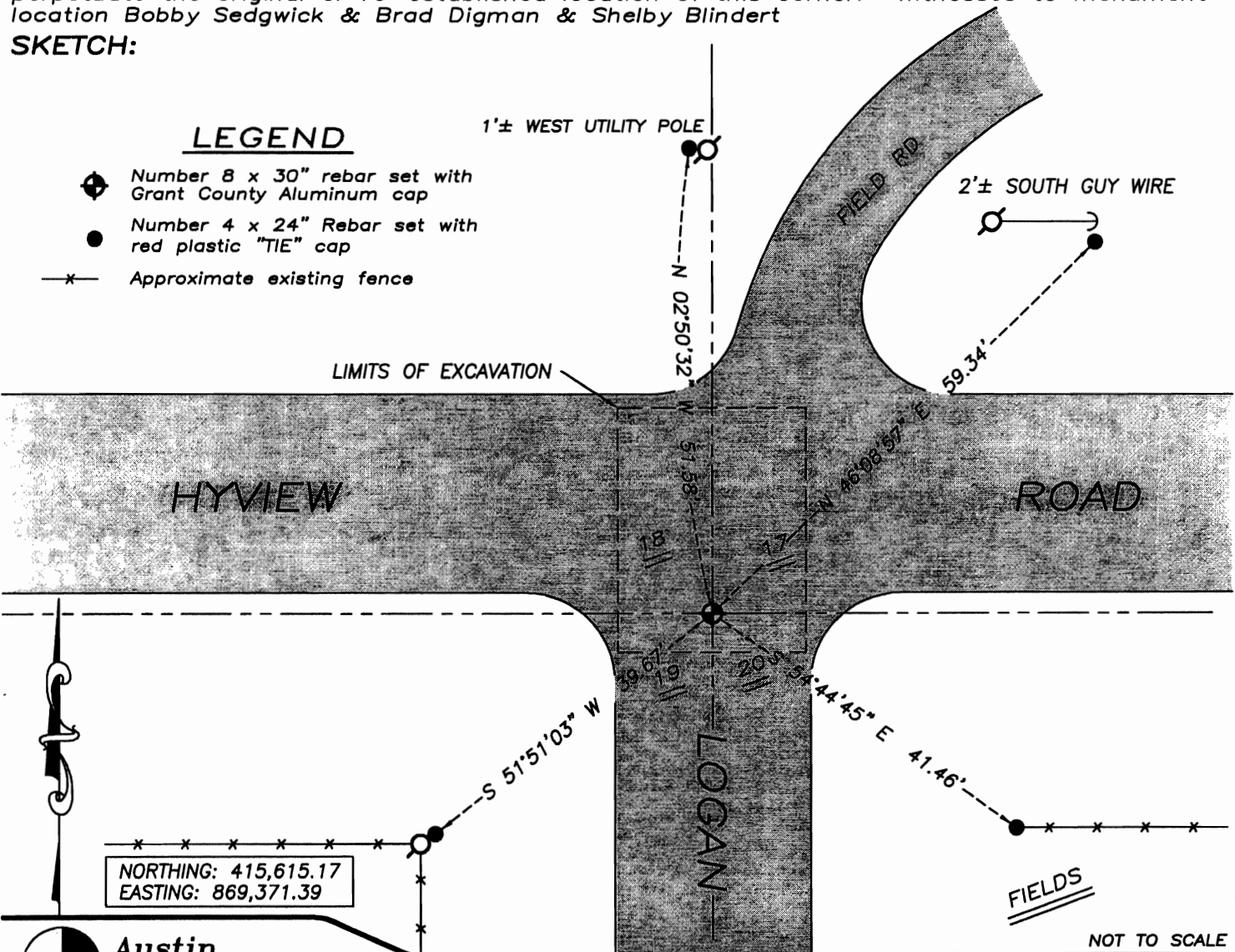
After excavating with a backhoe, no evidence of the corner or stone monument were found. I reset the corner based on proportionate measurements to all adjoining corners. Verified this location using EDM & GPS methods.

DESCRIPTION OF CORNER AND WITNESS MONUMENTS, references and accessories used to perpetuate the original or re-established location of this corner. Witnesses to monument location Bobby Sedgwick & Brad Digman & Shelby Blindert

SKETCH:

LEGEND

- ⊕ Number 8 x 30" rebar set with Grant County Aluminum cap
- Number 4 x 24" Rebar set with red plastic "TIE" cap
- x- Approximate existing fence



NOT TO SCALE

Austin Engineering LLC

4211 HWY 81 E, LANCASTER, WI 53813
PHONE 608-723-8363 FAX 608-723-8702

JOB NUMBER 08S002
FIELDBOOK: TDSR, 2910
G:\T1NR1W\T1NR1W
H:\TIE\T1NR1W\71

DRAWN BY: SW AUSTIN
APPROVED: LL AUSTIN