

U. S. PUBLIC LAND SURVEY MONUMENT RECORD

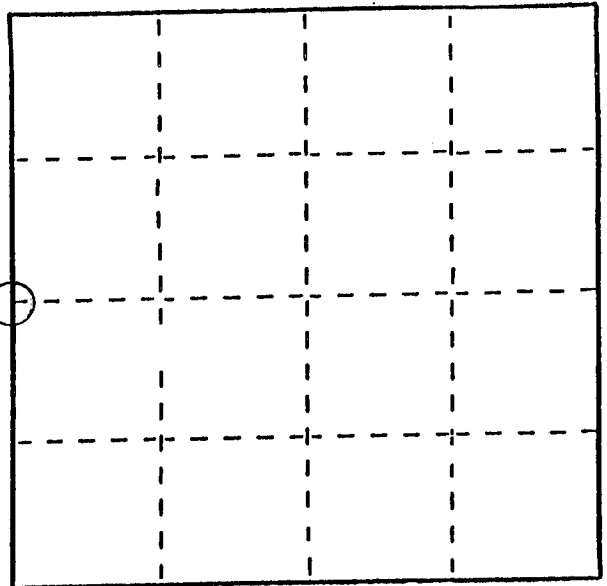
COUNTY

INSTRUCTIONS: This record shall show the location of the corner and shall include all of the following nine elements (a through i).

(a) Identify the corner by reference to the U.S. public land survey system.

○ = Corner monument restored.

CORNER RESTORED WAS THE
W 1/4 CORNER OF SECTION 15
TOWNSHIP 1 NORTH, RANGE 1 WEST



SECTION 15 T. 1 N., R. 1 W.
TOWN OF HAZEL GREEN

(b) Describe any record evidence, monument evidence, occupational evidence, testimonial evidence or any other material evidence you considered, and whether the monument was found or placed.

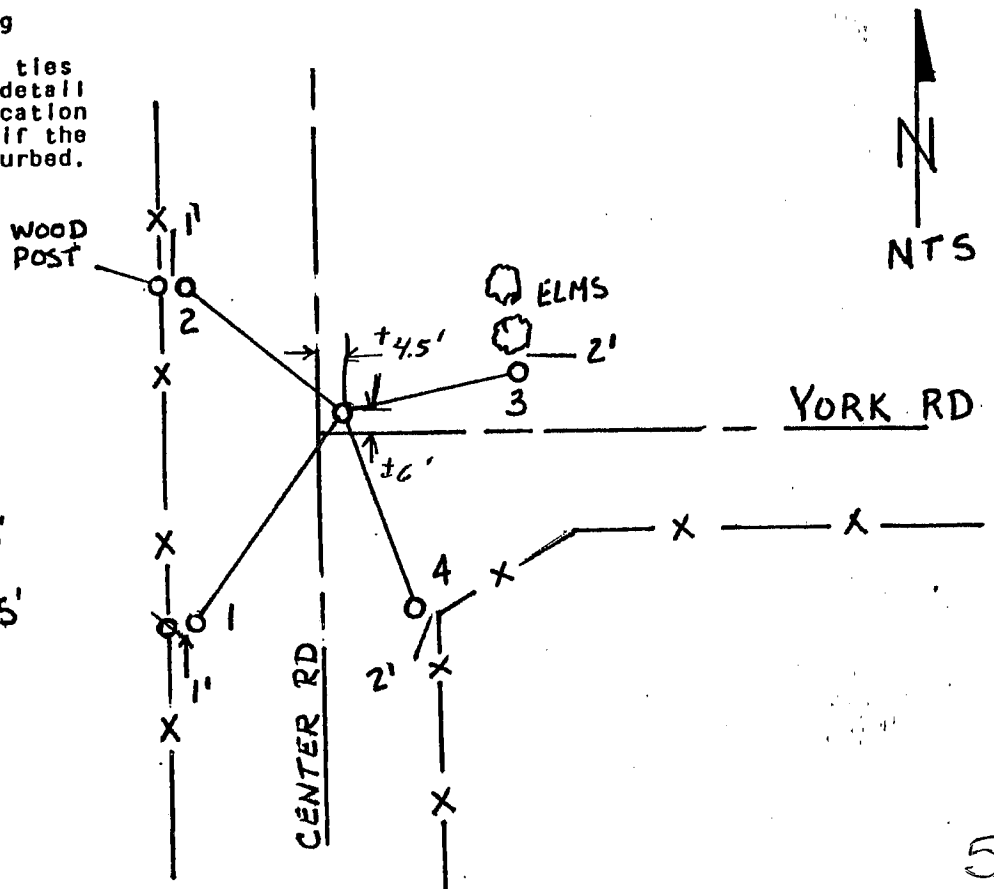
Record survey in this part of Section 15, dated June 28th, 1859 by County Surveyor. Did not find any evidence of corner - appears to fall in cut for road way. This corner was referenced in Vol 534 of Deeds, Page 231. I found some field evidence of this parcel and reestablished the W 1/4 from that evidence and EDM TRAVERSE OF THE AREA. PLACED 3/4" x 24" Re bar AT ROADWAY SURFACE

(c) In the plan view drawing below, provide reference ties to at least 4 witness monuments, or, if the location is within a municipality, to at least 2 witness monuments. (Witness monuments shall be made of concrete, natural stone, iron or other equally durable material.) Describe witness monuments.

(d) Show a plan view drawing depicting the relevant monuments and reference ties which is sufficient in detail to enable accurate relocation of the corner monument if the corner monument is disturbed. Indicate north.

TIES TO MON

- 1 - 0° 00' 00" ; 48.32'
- 2 - 80° 45' 06" ; 35.05'
- 3 - 203° 29' 30" ; 53.45'
- 4 - 282° 29' 50" ; 60.85'



(e) Describe any material discrepancy between the location of the corner as restored or reestablished and the location of that corner as previously restored or reestablished by distance and direction. Show the discrepancy on the plan view drawing under (d), above. Show the distances between the corner as previously restored or reestablished and (1) the corner as restored or reestablished, and (2) to at least 2 of the witness monuments shown on the drawing in (d), above.

N.A.

(f) Was the corner restored through acceptance of (1) an obliterated evidence location, or, (2) a found perpetuated location?

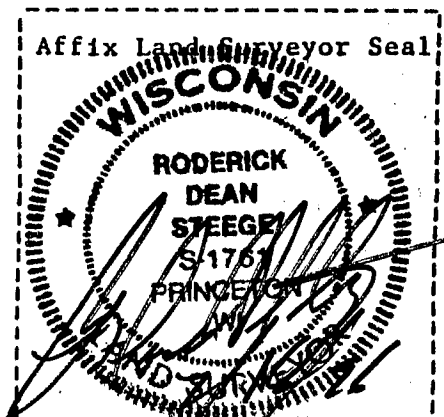
(g&h) Was the corner reestablished through lost corner proportionate methods? If so, show the method, including the directions and distances to other public land survey corners used as evidence or used for proportioning in determining the corner location?

No

(i) I, RODERICK D. STEEGE
(type or print name) certify that the corner location shown on this record was determined by me or under my direction and control and that this U.S. Public Land Survey Monument Record is correct and complete to the best of my knowledge and belief.

[Signature]
Signature

7/16/96
Date



RUST & EITZ
1210 FOURIER DR
SUITE 100
MADISON, WI 53717