

GRANT COUNTY CERTIFIED LAND CORNER

CORNER NUMBER 58

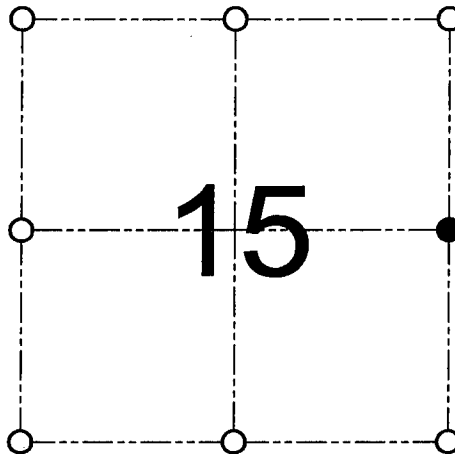
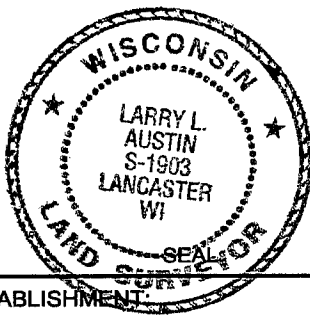
CERTIFICATE:

I, Larry L. Austin, do hereby certify that on the 17th day of October, 2000, I found evidence of the East 1/4 corner of Section 15, Town 1 North, Range 1 West, of the 4th Principal Meridian, and I re-established said corner according to the Wisconsin statutes as shown and described hereon.

Dated this 30th day of October, 2000

Larry L. Austin

Larry L. Austin S-1903



● = CORNER LOCATION
EAST 1/4 CORNER OF SECTION 15, T 1 N R 1 W TOWN OF HAZEL GREEN

HISTORY OF ORIGINAL CORNER ESTABLISHMENT:

Corner was originally set in 1832 by Lucius Lyon. Burbach stated he set an Aluminum monument.

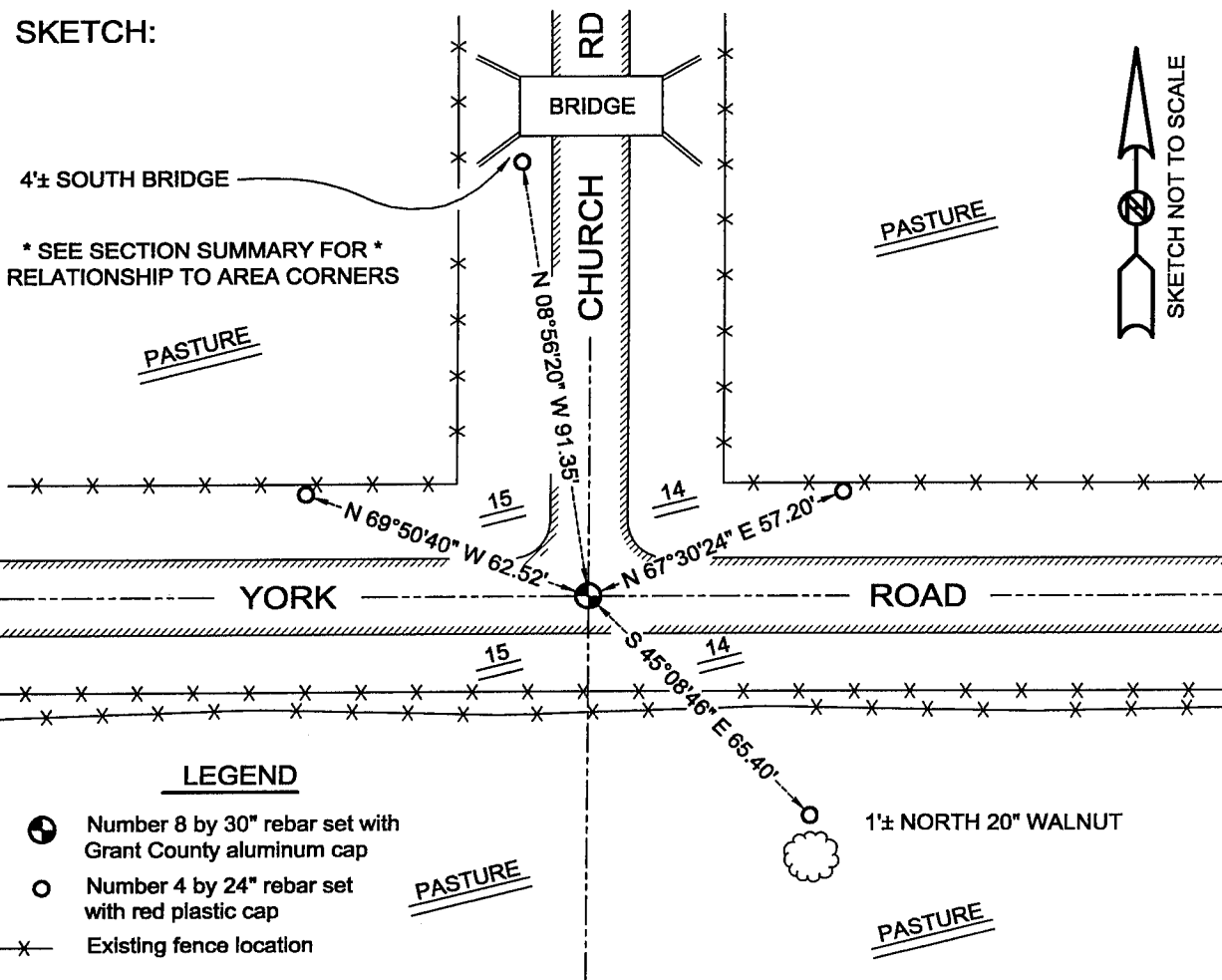
DESCRIPTION OF CORNER EVIDENCE FOUND:

I found no evidence of the Aluminum monument. I reset the corner based on occupational evidence. This location fit well with area corners. Verified this location using E.D.M. & G.P.S. methods.

DESCRIPTION OF CORNER AND WITNESS MONUMENTS, references and accessories used to perpetuate the original or re-established location of this corner

WITNESS TO THE CORNER LOCATION: SHANE AUSTIN & TIM FAUVER

SKETCH:



LEGEND

- ⊕ Number 8 by 30" rebar set with Grant County aluminum cap
- Number 4 by 24" rebar set with red plastic cap
- x— Existing fence location

C:\SC14\SWAIT\ET1\NR1W\58