

GRANT COUNTY CERTIFIED LAND CORNER

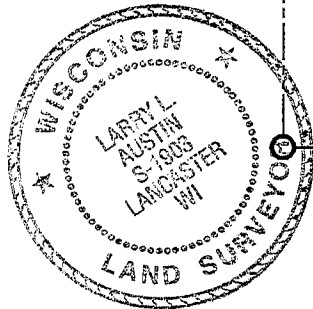
CORNER NO. 37

CERTIFICATE:

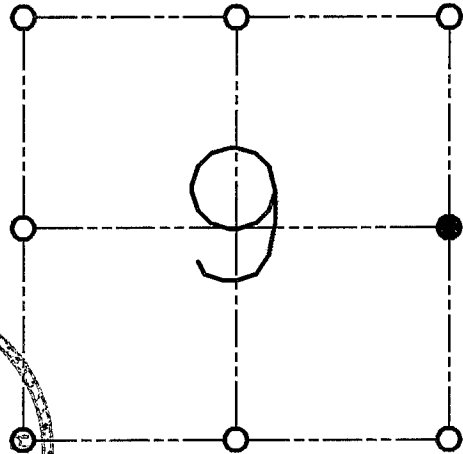
I, LARRY L. AUSTIN, DO HEREBY CERTIFY THAT ON 26 DAY OF OCTOBER, 1998, I FOUND OCCUPATIONAL EVIDENCE OF THE EAST 1/4 OF SECTION 9, TOWN 1 NORTH, RANGE 1 WEST, OF THE FOURTH PRINCIPAL MERIDIAN, AND I RE-ESTABLISHED SAID CORNER ACCORDING TO THE WISCONSIN STATUTES AS SHOWN AND DESCRIBED HEREON.

DATED THIS 31 DAY OF DECEMBER, 1998

Larry L. Austin
LARRY L. AUSTIN S-1903



SEAL



● = CORNER LOCATION

EAST 1/4 OF SECTION 9
T 1 N R 1 W
TOWN OF HAZEL GREEN

HISTORY OF ORIGINAL CORNER ESTABLISHMENT:

CORNER SET IN 1832 BY LUCIUS LYON.

DESCRIPTION OF CORNER EVIDENCE FOUND:

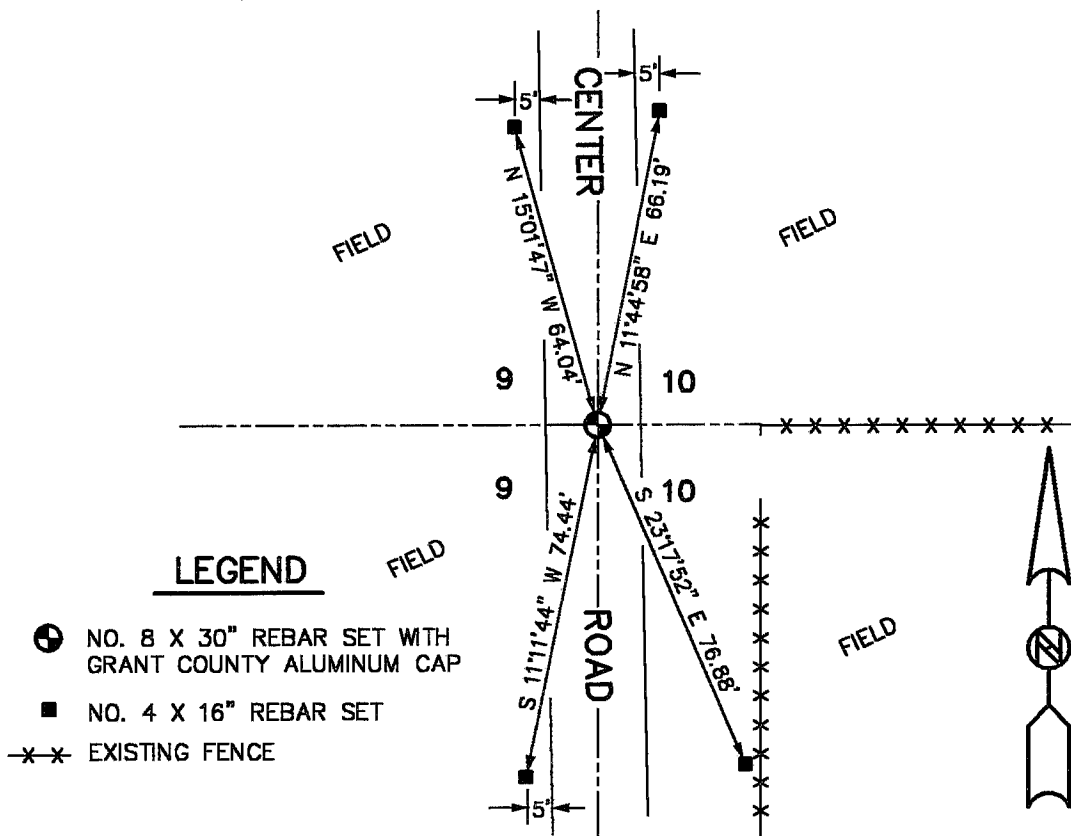
FOUND A P.K. NAIL AT THE CENTERLINE OF CENTER ROAD / FENCE EAST. I ACCEPTED THIS LOCATION USING E.D.M. & G.P.S. METHODS.

DESCRIPTION OF CORNER AND WITNESS MONUMENTS, REFERENCES AND ACCESSORIES USED TO PERPETUATE THE ORIGINAL OR RE-ESTABLISHED LOCATION OF THIS CORNER:

WITNESS TO THE CORNER LOCATION:

BOBBY SEDGWICK
SHELBY BLINDERT

SKETCH:



LEGEND

- NO. 8 X 30" REBAR SET WITH GRANT COUNTY ALUMINUM CAP
- NO. 4 X 16" REBAR SET
- *- EXISTING FENCE