

# GRANT COUNTY CERTIFIED LAND CORNER

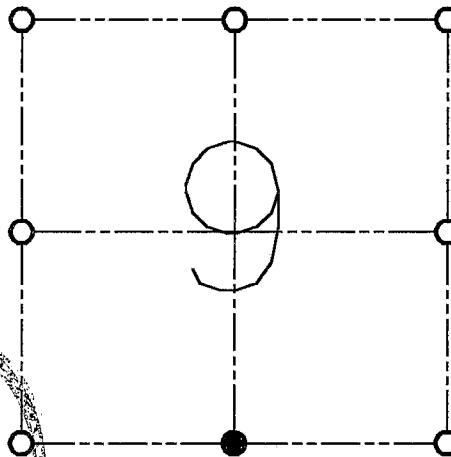
CORNER NO. 48

**CERTIFICATE:**

I, LARRY L. AUSTIN, DO HEREBY CERTIFY THAT ON 26 DAY OF OCTOBER, 1998, I FOUND OCCUPATIONAL EVIDENCE OF THE SOUTH 1/4 OF SECTION 9, TOWN 1 NORTH, RANGE 1 WEST, OF THE FOURTH PRINCIPAL MERIDIAN, AND I RE-ESTABLISHED SAID CORNER ACCORDING TO THE WISCONSIN STATUTES AS SHOWN AND DESCRIBED HEREON.

DATED THIS 31 DAY OF DECEMBER, 1998

*Larry L. Austin*  
LARRY L. AUSTIN S-1903



● = CORNER LOCATION

SOUTH 1/4 OF SECTION 9  
T 1 N R 1 W  
TOWN OF HAZEL GREEN



SEAL

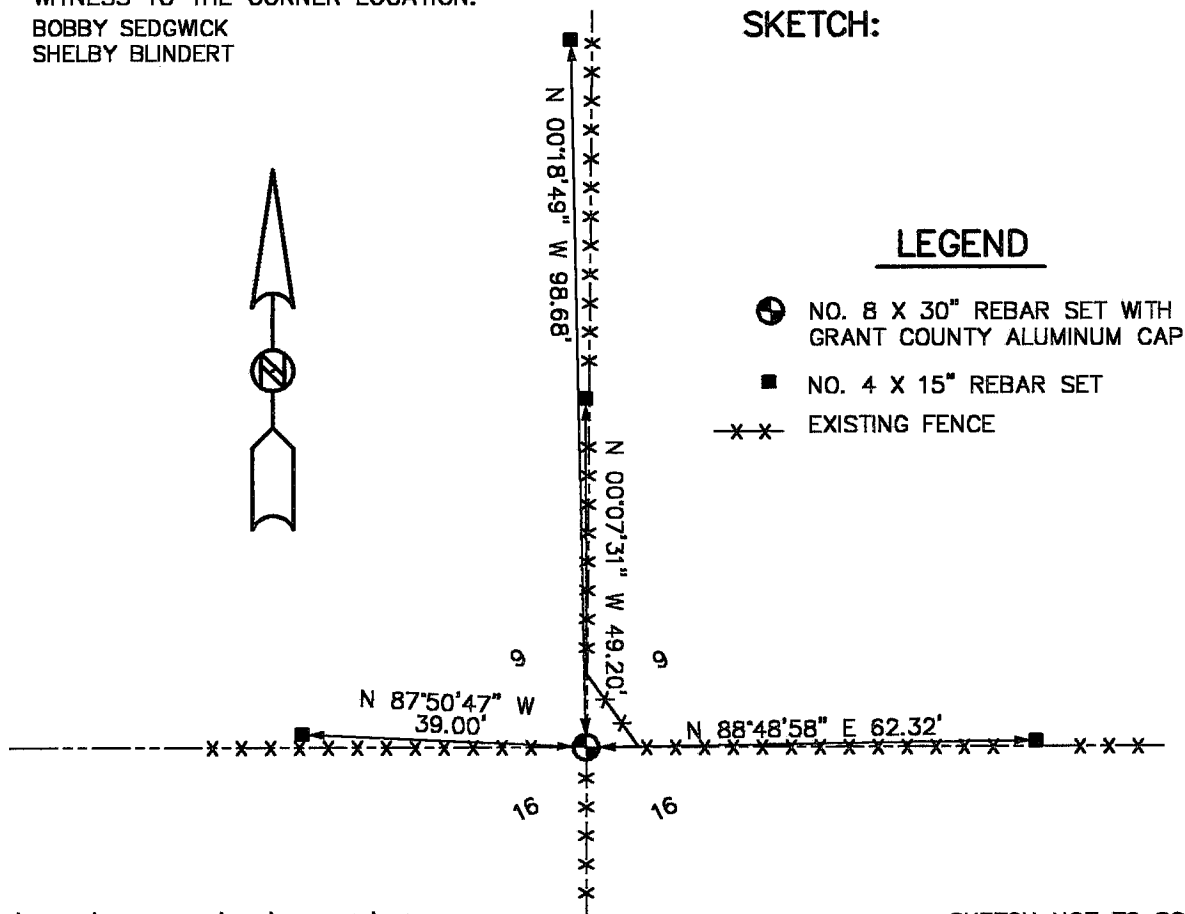
HISTORY OF ORIGINAL CORNER ESTABLISHMENT:  
CORNER SET IN 1832 BY LUCIUS LYON.

DESCRIPTION OF CORNER EVIDENCE FOUND:  
CORNER SET AT OCCUPIED FENCE CORNER. VERIFIED THIS LOCATION USING E.D.M. AND G.P.S. METHODS.

DESCRIPTION OF CORNER AND WITNESS MONUMENTS, REFERENCES AND ACCESSORIES USED TO PERPETUATE THE ORIGINAL OR RE-ESTABLISHED LOCATION OF THIS CORNER:

WITNESS TO THE CORNER LOCATION:  
BOBBY SEDGWICK  
SHELBY BLINDERT

**SKETCH:**



LEGEND

- NO. 8 X 30" REBAR SET WITH GRANT COUNTY ALUMINUM CAP
- NO. 4 X 15" REBAR SET
- x-x- EXISTING FENCE