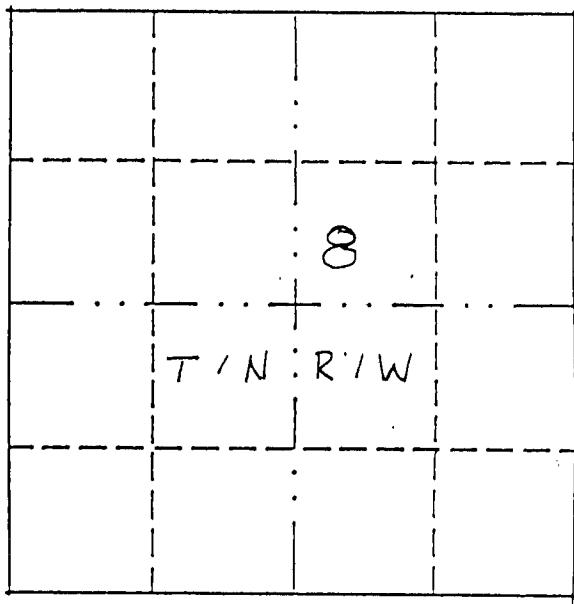


# U.S. PUBLIC LAND SURVEY MONUMENT RECORD

THIS RECORD SHALL SHOW THE LOCATION OF THE CORNER AND SHALL INCLUDE ALL OF THE FOLLOWING NINE ELEMENTS (A THROUGH I).

(a) Identify the corner by reference to the U.S. public land survey system.

WEST 1/4 CORNER  
SECTION 8, T1N-R1W  
HAZEL GREEN TWP.  
GRANT COUNTY, WI



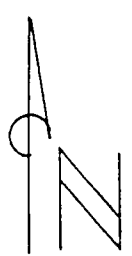
● = corner monument restored.

(b) Describe any record evidence, monument evidence, occupational evidence, testimonial evidence or any other material evidence you considered, and whether the monument was found or placed.

Monument was placed in line with fenceline after EDM traverse of area.

(c) In the plan view drawing below, provide reference ties to at least four witness monuments, or, if the location is within a municipality, to at least two witness monuments. (Witness monuments shall be made of concrete, natural stone, iron or other equally durable material.) Describe witness monuments.

(d) Show a plan view drawing depicting the relevant monuments and reference ties which is sufficient in detail to enable accurate relocation of the corner monument if the corner monument is disturbed. Indicate north.



NOT TO SCALE

- = Section Corner Mon.  
Set 3/4" x 24" Rebar
- Δ = SET 3/4" Rebar
- OH = Set Spike in Power Pole



(e) Describe any material discrepancy between the location of the corner as restored or reestablished and the location of that corner as previously restored or reestablished by distance and direction. Show the discrepancy on the plan view drawing under (d), above. Show the distances between the corner as previously restored or reestablished and (1) the corner as restored or reestablished, and (2) to at least two of the witness monuments shown on the drawing in (d), above.

NONE.

(f) Was the corner restored through acceptance of (1) an obliterated evidence location, or (2) a found perpetuated location?

/.

(g) & (h) Was the corner reestablished through lost corner proportionate methods? If so, show the method, including the directions and distances to other public land survey corners used as evidence or used for proportioning in determining the corner location?

No.

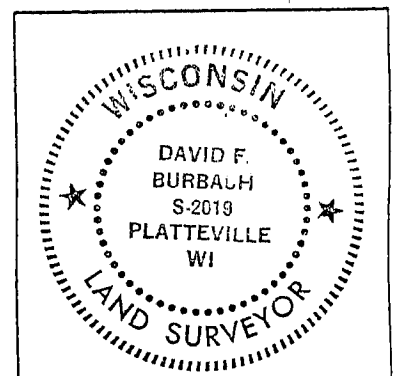
(I) I, DAVID F. BURBACH

(type or print name) certify that the corner location shown on this record was determined by me or under my direction and control and that this U.S. Public Land Survey Monument Record is correct and complete to the best of my knowledge and belief.

David F. Burbach

6/3/93

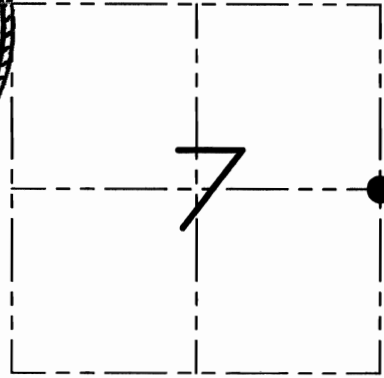
Date



affix land surveyor seal

# U.S. PUBLIC LAND SURVEY MONUMENT RECORD

Section 7, Town 1 North Range 1 West, Town of Hazel Green, Grant County, Wisconsin



● = CORNER LOCATION

## CERTIFICATE

I, Larry L. Austin, do hereby certify that the corner location on this record was determined by me and/or under my direct supervision and that this U.S. public land survey monument record is correct and complete to the best of my knowledge and belief.

*Larry L. Austin*  
 Larry L. Austin, S-1903

6.8.09  
 date

## HISTORY OF CORNER

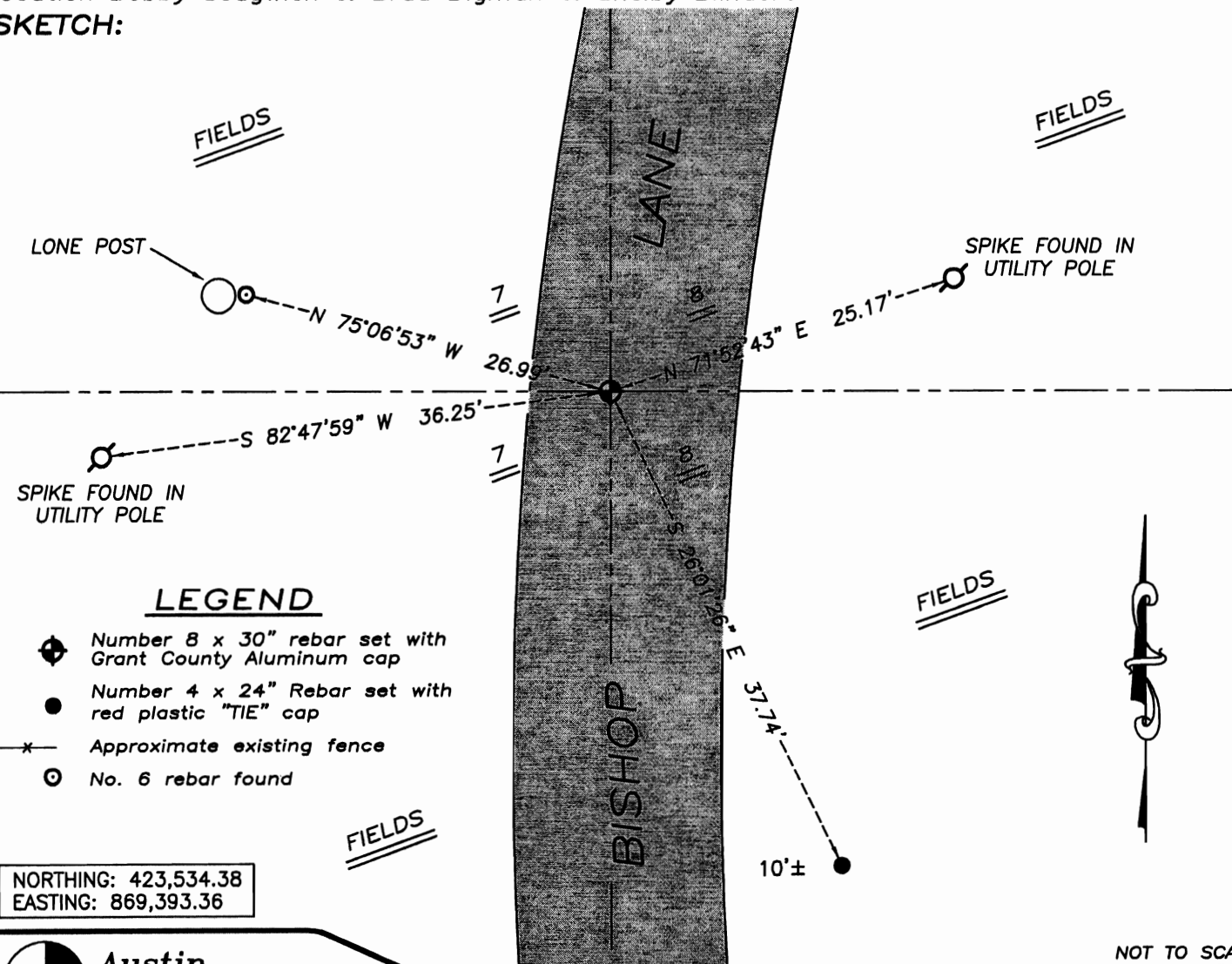
Corner was originally set in the 2nd quarter of 1832 by Lyon. In 1847 Stuntz tied to the original corner. In 1957 Ralph Jr. tied to the corner with no mention of monument. In 1993 Burbach set and tied out the corner. No other recent record of the corner was found.

## CORNER EVIDENCE FOUND

I found an existing nail at Burbach's location. I accepted it's location after an EDM & GPS traverse of the area.

**DESCRIPTION OF CORNER AND WITNESS MONUMENTS**, references and accessories used to perpetuate the original or re-established location of this corner. Witnesses to monument location Bobby Sedgwick & Brad Digman & Shelby Blindert

## SKETCH:



NORTHING: 423,534.38  
 EASTING: 869,393.36

NOT TO SCALE

**Austin Engineering LLC**  
 4211 HWY 81 E, LANCASTER, WI 53813  
 PHONE 608-723-6363 FAX 608-723-6702

JOB NUMBER 08S002  
 FIELDBOOK: TDSR, 2910  
 G:\T1NR1W\T1NR1W  
 H:\TIE\T1NR1W\35

DRAWN BY: SW AUSTIN  
 APPROVED: LL AUSTIN