

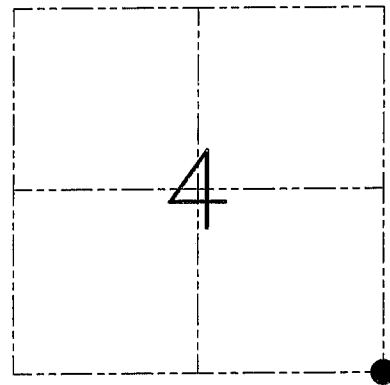
U.S. PUBLIC LAND SURVEY MONUMENT RECORD - GRANT COUNTY, WI
 Section 4, Town 1 North Range 1 West, Town of Hazel Green

CERTIFICATE

I, Larry L. Austin, do hereby certify that the corner location on this record was determined by me and/or under my direct supervision and that this U.S. public land survey monument record is correct and complete to the best of my knowledge and belief.

Dated this 16th day of January, 2002

Larry L. Austin
 Larry L. Austin S-1903



● = CORNER LOCATION

HISTORY OF CORNER ESTABLISHMENT

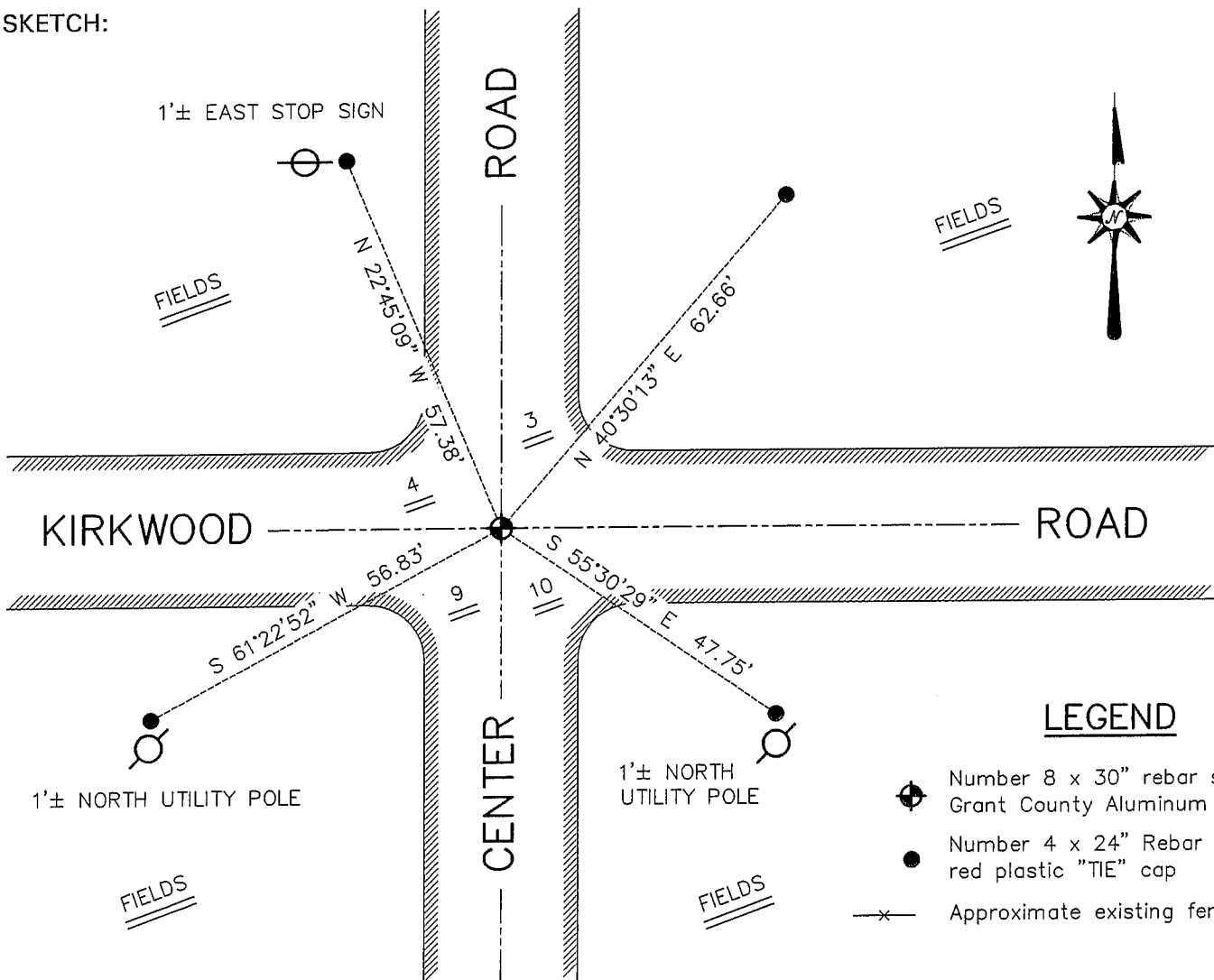
Corner was originally set in 1832 by Lucius Lyon. In 1879 Barber tied to the corner with no mention of monument or witnesses.

DESCRIPTION OF CORNER EVIDENCE FOUND

I reset the corner proportionately between the adjoining corners. This location fit the occupied centerline/centerline of the township roads. Verified this location using EDM & GPS methods.

DESCRIPTION OF CORNER AND WITNESS MONUMENTS, references and accessories used to perpetuate the original or re-established location of this corner. Witnesses to the corner location Bobby Sedgwick & Shane Austin & Dustin Maas

SKETCH:



LEGEND

- ⊕ Number 8 x 30" rebar set with Grant County Aluminum Cap
- Number 4 x 24" Rebar set with red plastic "TIE" cap
- x- Approximate existing fence

SKETCH NOT TO SCALE

AUSTIN ENGINEERING, LLC

4211 HWY 81 EAST, LANCASTER, WI 53813
 PHONE 608-723-6363 FAX 608-723-6702

FIELDBOOK: SDR33, 2200

G: \T1NR1W\T1NR1W

C: \SWA\TIE\T1NR1W\27

CREW: BS-SB-SA-DM-KW

DRAWN BY: SW AUSTIN

APPROVED: LL AUSTIN

CORNER NUMBER 27