

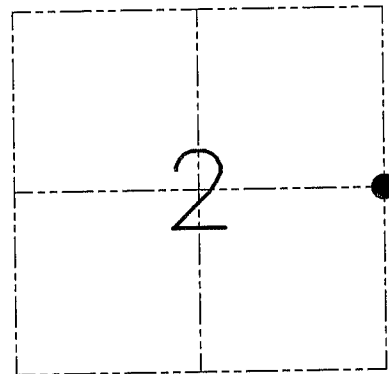
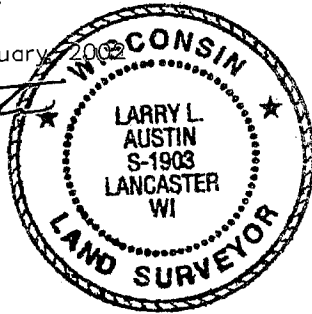
**U.S. PUBLIC LAND SURVEY MONUMENT RECORD - GRANT COUNTY, WI**  
 Section 2, Town 1 North Range 1 West, Town of Hazel Green

**CERTIFICATE**

I, Larry L. Austin, do hereby certify that the corner location on this record was determined by me and/or under my direct supervision and that this U.S. public land survey monument record is correct and complete to the best of my knowledge and belief.

Dated this 16th day of January 2002

*Larry L. Austin*  
 Larry L. Austin S-1903



● = CORNER LOCATION

**HISTORY OF CORNER ESTABLISHMENT**

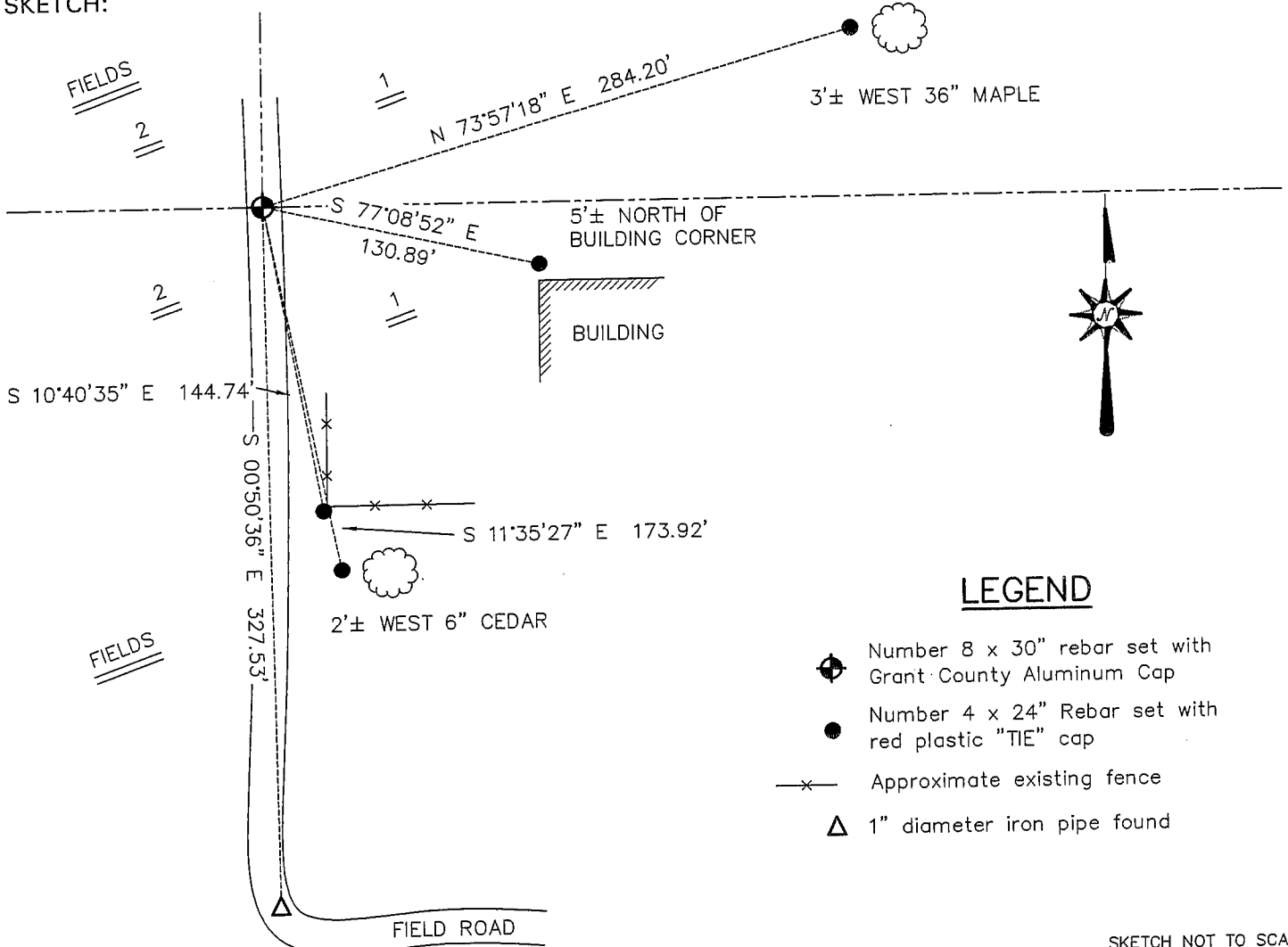
Corner was originally set in 1832 by Lucius Lyon.  
 In 1995 I set an Aluminum monument at this location.

**DESCRIPTION OF CORNER EVIDENCE FOUND**

I was unable to locate the Aluminum monument. I reset the corner based on evidence of this and area corners. Verified this location using EDM & GPS methods.

**DESCRIPTION OF CORNER AND WITNESS MONUMENTS, references and accessories used to perpetuate the original or re-established location of this corner. Witnesses to the corner location Bobby Sedgwick & Shelby Blindert & Kelly Wolf**

**SKETCH:**



**LEGEND**

- Number 8 x 30" rebar set with Grant County Aluminum Cap
- Number 4 x 24" Rebar set with red plastic "TIE" cap
- x- Approximate existing fence
- △ 1" diameter iron pipe found

SKETCH NOT TO SCALE

**AUSTIN ENGINEERING, LLC**

4211 HWY 81 EAST, LANCASTER, WI 53813  
 PHONE 608-723-6363 FAX 608-723-6702

DRAWN BY: SW AUSTIN  
 APPROVED: LL AUSTIN

**CORNER NUMBER 19**

# GRANT COUNTY

## Survey Monument Record

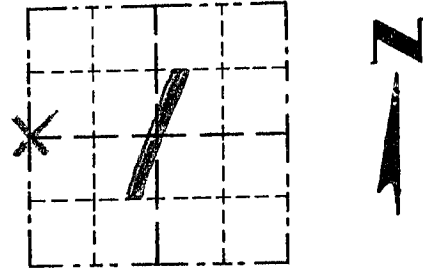
TYPE OF MONUMENT 3/4" X 24" SMOOTH BAR  
 STATE PLANE COORDINATES: N \_\_\_\_\_  
 E \_\_\_\_\_  
 ELEVATION — M.S.L. DATUM: \_\_\_\_\_  
 THETA ANGLE: \_\_\_\_\_  
 FIELD BOOK: 92-15  
 PAGE \_\_\_\_\_

CORNER NO. 19  
 SECTION 1  
 TOWN 1 N  
 RANGE 1 W  
W 1/4 COR

### BASIS FOR MONUMENT LOCATION

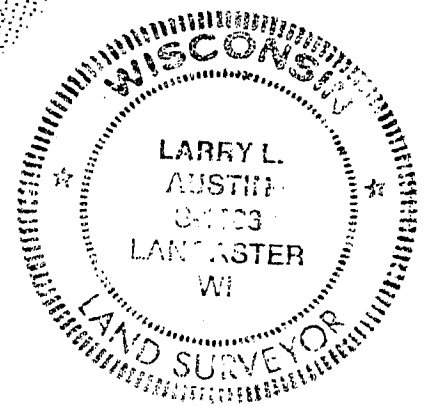
(Use reverse side if necessary)

Show info such as: History of corner, with reference to Vol. and pg., dates, surveyor; exact description of monument replaced; if location computed, by taped or EDM traverse; landowner, remarks, etc.



LOCATION  
(Indicated by "X")

SEAL:



CORNER WAS ORIGINALLY SET BY LUCIUS LYON IN 1832; NO RECORD OF THE CORNER WAS FOUND SINCE THE ORIGINAL SURVEYS; I SET THE CORNER AT THE ORIGINAL DISTANCE OF 40 CHAINS FROM THE SW CORNER & ON LINE WITH THE NW CORNER. THIS LOCATION FITS THE PROJECTION OF DISTANT FENCES.

CERTIFIED CORRECT

*Larry L. Austin*  
Registered Land Surveyor

DATE: 2/16/95

### TIE SKETCH

Show at least three (3) ties and monument

#### LEGEND

- 3/4" X 24" SMOOTH BAR SET = CORNER
- 1/2" X 18" REBAR SET = TIE
- X-X EXISTING FENCE

