

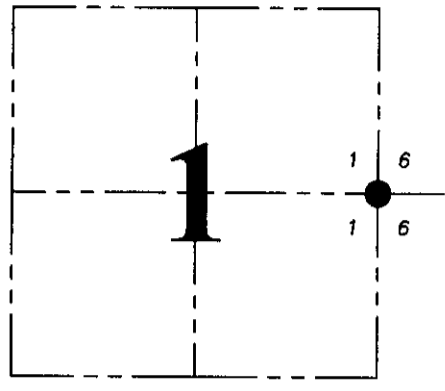
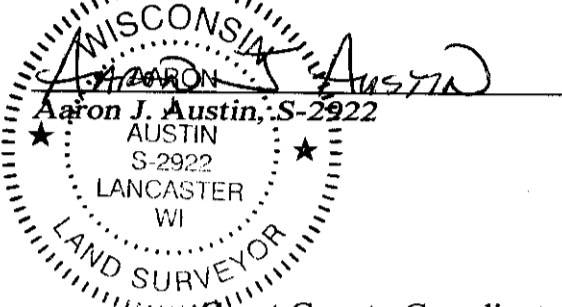
**U.S. PUBLIC LAND SURVEY MONUMENT RECORD - GRANT COUNTY, WI**

Section 1, Town 1 North Range 1 West, Town of Hazel Green

**CERTIFICATE:**

I, Aaron J. Austin, Professional Wisconsin Land Surveyor, do hereby certify that the corner location on this record was determined by me and/or under my direct supervision and that this U.S. Public Land Survey Monument Record is correct and complete to the best of my knowledge and belief.

Dated ~~this~~ 21st day of March, 2015.



● = CORNER LOCATION

Grant County Coordinates Northing: 428,786.66 Easting: 895,811.57

**HISTORY OF CORNER ESTABLISHMENT:**

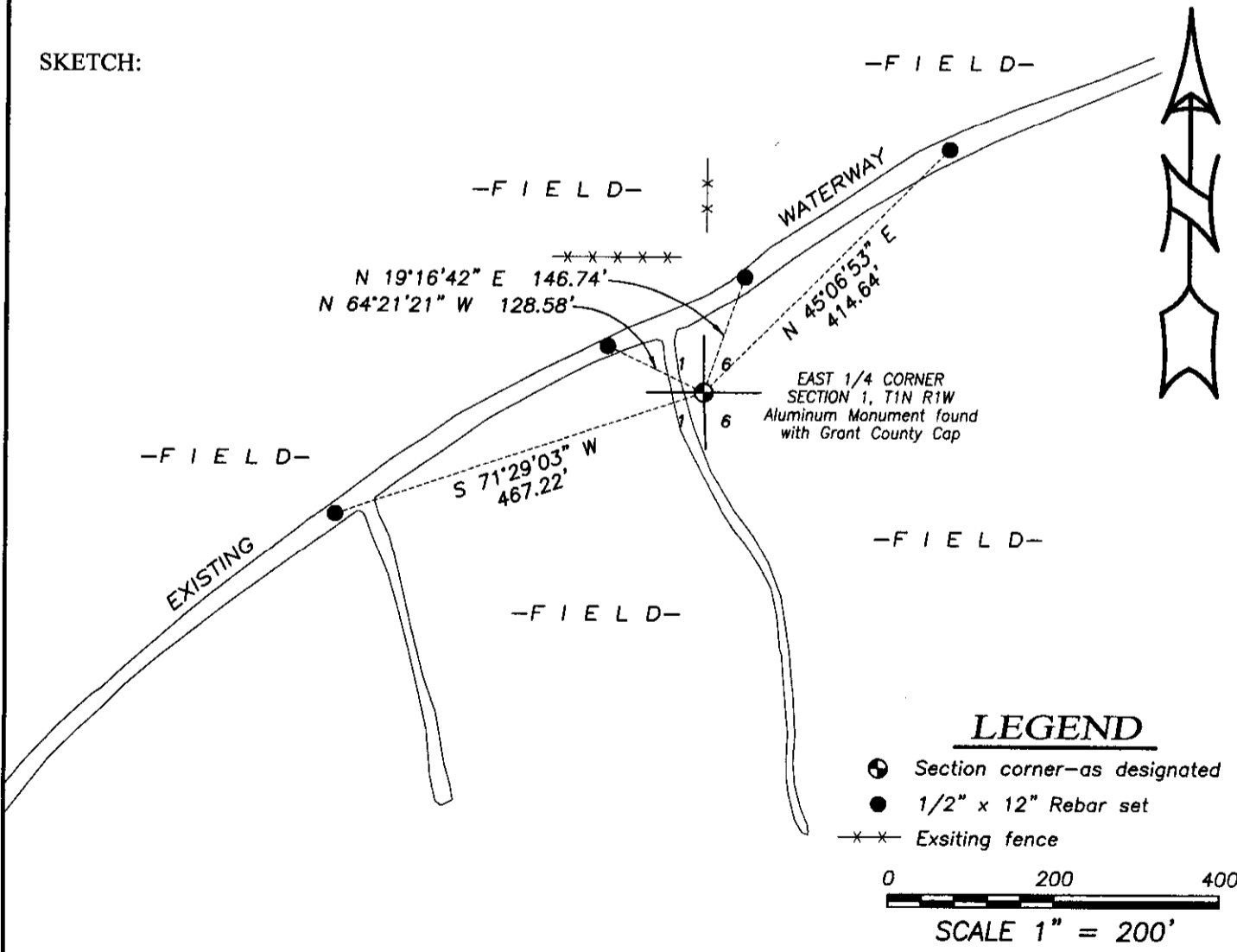
1832-Lucius Lyon set original corner.  
 1993-Bruce Bowden set a Driveable Grant County Aluminum Monument at the corner and filed a U.S. Public Land Survey Monument Record for Grant County.

**DESCRIPTION OF CORNER EVIDENCE FOUND:**

I found the existing Aluminum Monument in place with missing or disturbed witness ties. I reset 4 new ties and verified this location with G.P.S. methods.

**DESCRIPTION OF CORNER AND WITNESS MONUMENTS, references and accessories used to perpetuate the original or re-established location of this corner. Witnesses to corner location Shane Austin.**

**SKETCH:**



**LEGEND**

- Section corner—as designated
- 1/2" x 12" Rebar set
- x--- Existing fence



SCALE 1" = 200'



4211 HWY 81 E, LANCASTER, WI 53813  
 PHONE: 608-723-6363 FAX: 608-723-6702

JOB NO: 15s019  
 H:\CRD\15s019-BUSCH  
 H:\TIE\T1NR1W\20

FIELDBOOK: TDSR  
 DRAWN BY: AJ AUSTIN  
 CREW: SW AUSTIN

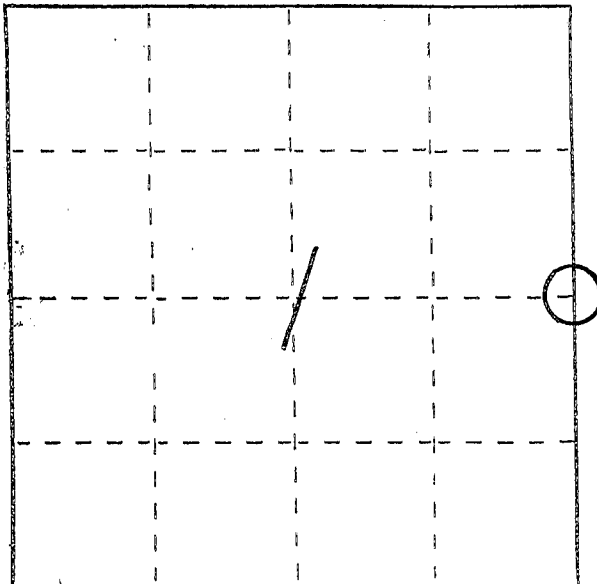
# U. S. PUBLIC LAND SURVEY MONUMENT RECORD

JUL 16 1993

INSTRUCTIONS: This record shall show the location of the corner and shall include all of the following nine elements (a through i).

- (a) Identify the corner by reference to the U.S. public land survey system.
- = Corner monument restored.

EAST 1/4 CORNER  
SECTION 1  
TOWN 1 NORTH  
RANGE 1 WEST  
HAZEL GREEN TWP.  
GRANT CO., WISC.

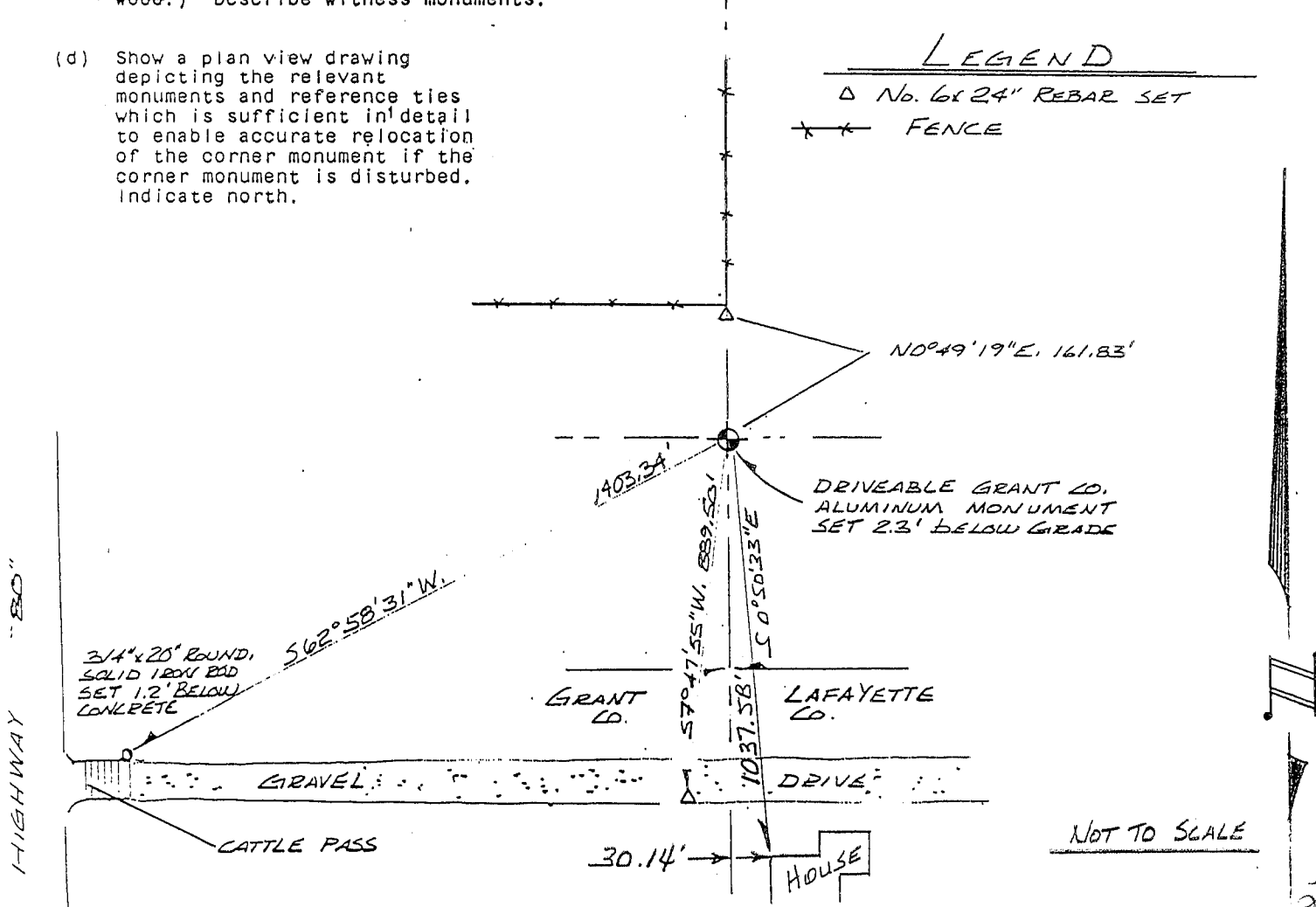
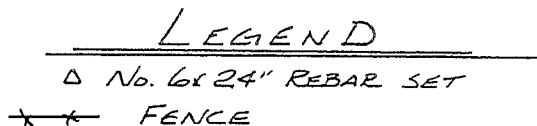


- (b) Describe any record evidence, monument evidence, occupational evidence, testimonial evidence or any other material evidence you considered, and whether the monument was found or placed.

MONUMENT SET FROM EXISTING PHYSICAL EVIDENCE OF FENCES AFTER VERIFICATION BY PROPORTIONATE MEASUREMENTS FROM AN EDM TRAVERSE OF THE AREA. ALSO FROM DESC. OF THE SOUTH 5 ACRES OF THE SE 1/4 OF THE NE 1/4 OF SECTION 1, T1N, R1W, AS PURCHASED BY JOHN BOWDEN IN 1937 (+).

- (c) In the plan view drawing below, provide reference ties to at least 4 witness monuments, or, if the location is within a municipality, to at least 2 witness monuments. (Witness monuments shall be made of concrete, natural stone, iron or other equally durable material, ~~except~~ ~~wood~~.) Describe witness monuments.

- (d) Show a plan view drawing depicting the relevant monuments and reference ties which is sufficient in detail to enable accurate relocation of the corner monument if the corner monument is disturbed. Indicate north.



NOT TO SCALE

(e) Describe any material discrepancy between the location of the corner as restored or reestablished and the location of that corner as previously restored or reestablished by distance and direction. Show the discrepancy on the plan view drawing under (d), above. Show the distances between the corner as previously restored or reestablished and (1) the corner as restored or reestablished, and (2) to at least 2 of the witness monuments shown on the drawing in (d), above.

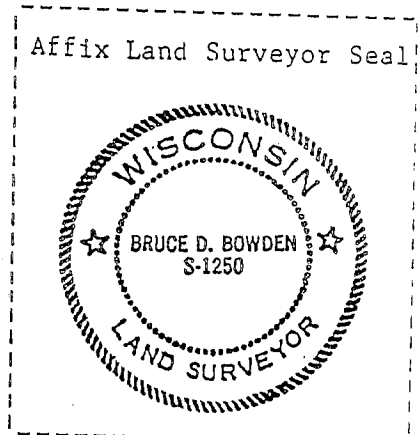
NONE

(f) Was the corner restored through acceptance of (1) an obliterated evidence location, or, (2) a found perpetuated location?

(2) A FOUND PERPETUATED LOCATION

(g&h) Was the corner reestablished through lost corner proportionate methods? If so, show the method, including the directions and distances to other public land survey corners used as evidence or used for proportioning in determining the corner location?

No.



I, BRUCE D. BOWDEN,  
(type or print name) certify that the corner location shown on this record was determined by me or under my direction and control and that this U.S. Public Land Survey Monument Record is correct and complete to the best of my knowledge and belief.

Bruce D Bowden July 12, 1993  
Signature Date