

U. S. PUBLIC LAND SURVEY MONUMENT TIE SHEET - GRANT COUNTY WISCONSIN.

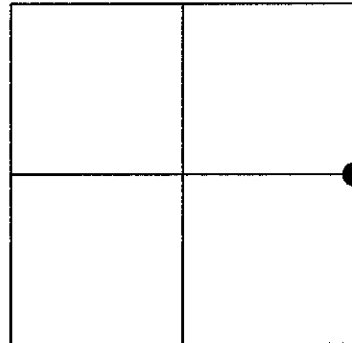
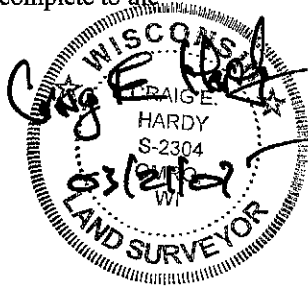
Section # 36 , Town 8 North, Range 3 West, Town of
Boscobel.

Certificate

I, Craig E Hardy, do hereby certify that the corner location on this record was determined by me and/or under my direct supervision and that this U.S. public land survey monument record is correct and complete to the best of my knowledge and belief.

Dated this 21st day of March, 2007.

Craig E Hardy
Craig E. Hardy, WI-RLS #2304



History of Corner Establishment

The original corner was set in 1833. No other records exist at the tax lister's office or county surveyor's office.

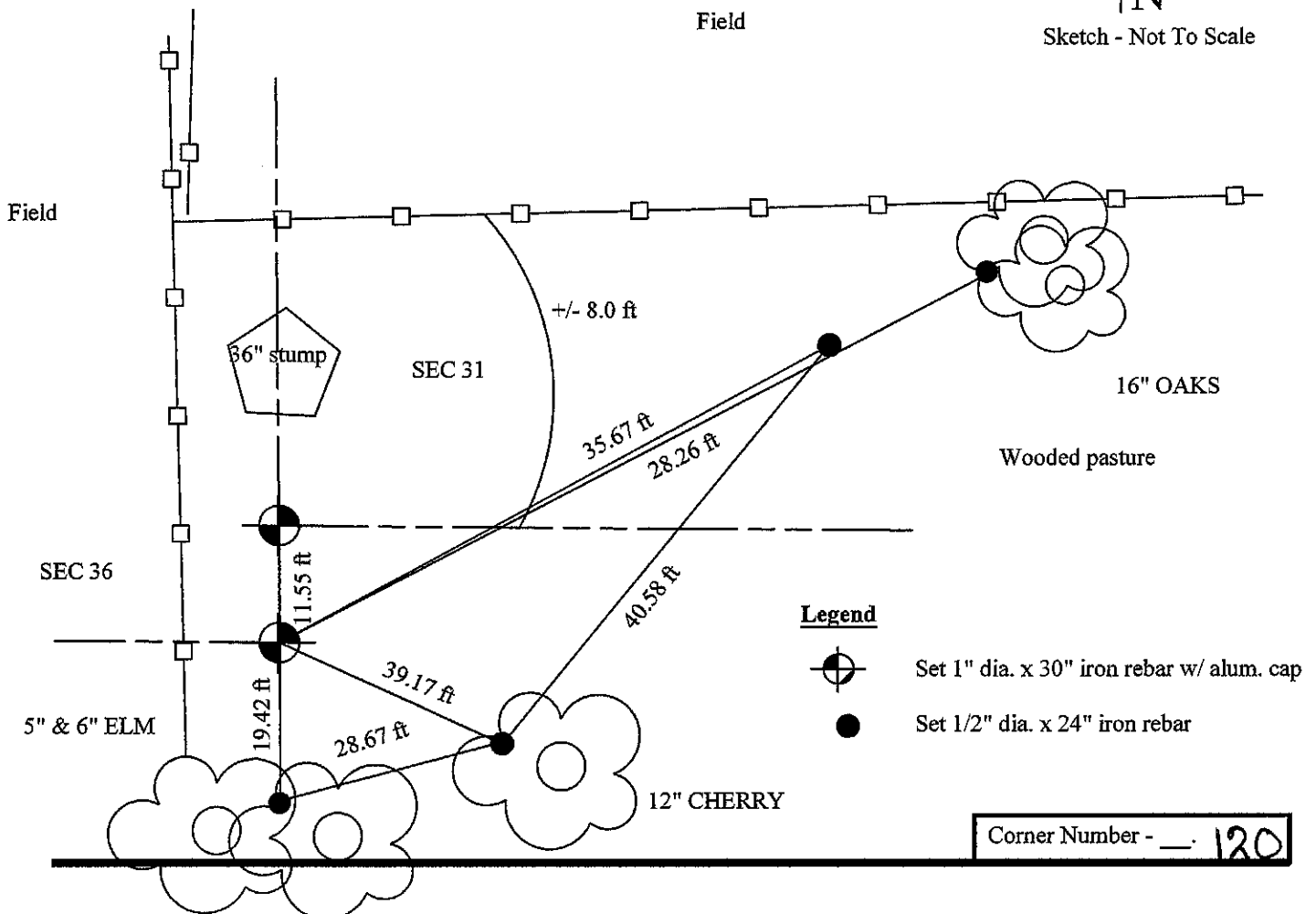
Description of Corner Evidence Found:

I found a disturbed stone monument laying on the ground in the vicinity of a 36" Dia. stump full of fence remnants. No other evidence of the original corners were found. I accepted the stump for direction based on fence lines of occupation attached thereto. After an extensive GPS and EDM survey of other fences in the section, I re-established the distance to this corner by accepting the occupation of the fences owned by Hardy/Richter and Richter/Baumeister.

Description of Corner and Witness Monuments, references and accessories used to perpetuate the original or re-established location of this corner.

Witnesses to corner location _____

SKETCH:



Legend

- Set 1" dia. x 30" iron rebar w/ alum. cap
- Set 1/2" dia. x 24" iron rebar

Corner Number - 120