

U.S. PUBLIC LAND SURVEY MONUMENT RECORD - GRANT COUNTY, WI

Section 34, Town 8 North Range 3 West, Town of Boscobel (a)

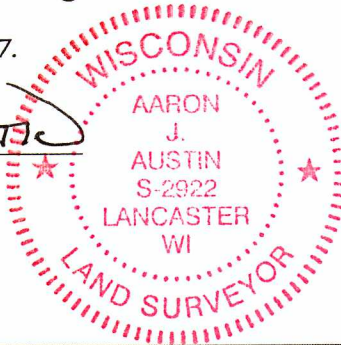
NOTE: This form is intended and designed to fulfill all requirements of the Wisconsin Administrative Code Chapter A-E 7.08, U.S. Public Land Survey Monument Record (3) (a) (b) (c) (d) (e) (f) (g) (h) (i).

CERTIFICATE: (i)

I, Aaron J. Austin, Wisconsin Professional Land Surveyor, do hereby certify that the corner location on this record was determined by me and/or under my direct supervision and that this U.S. Public Land Survey Monument Record is correct and complete to the best of my knowledge and belief.

Dated this 1st day of June, 2017.

Aaron J. Austin
 Aaron J. Austin, S-2922



⊙ = CORNER LOCATION

Grant County Coordinates:
 NAD 83 (2011)
 Northing: 625,188.20
 Easting: 820,159.59

HISTORY OF CORNER ESTABLISHMENT:

Original corner was set in 1833 by Hervy Parke.
 Laurence Schmit found a Brass Cap in concrete on a Survey filed in Book GCA, Page 1089.
 Sean Walsh set a 3/4" Iron Rod and prepared a Survey Monument Record dated 6/14/1996.

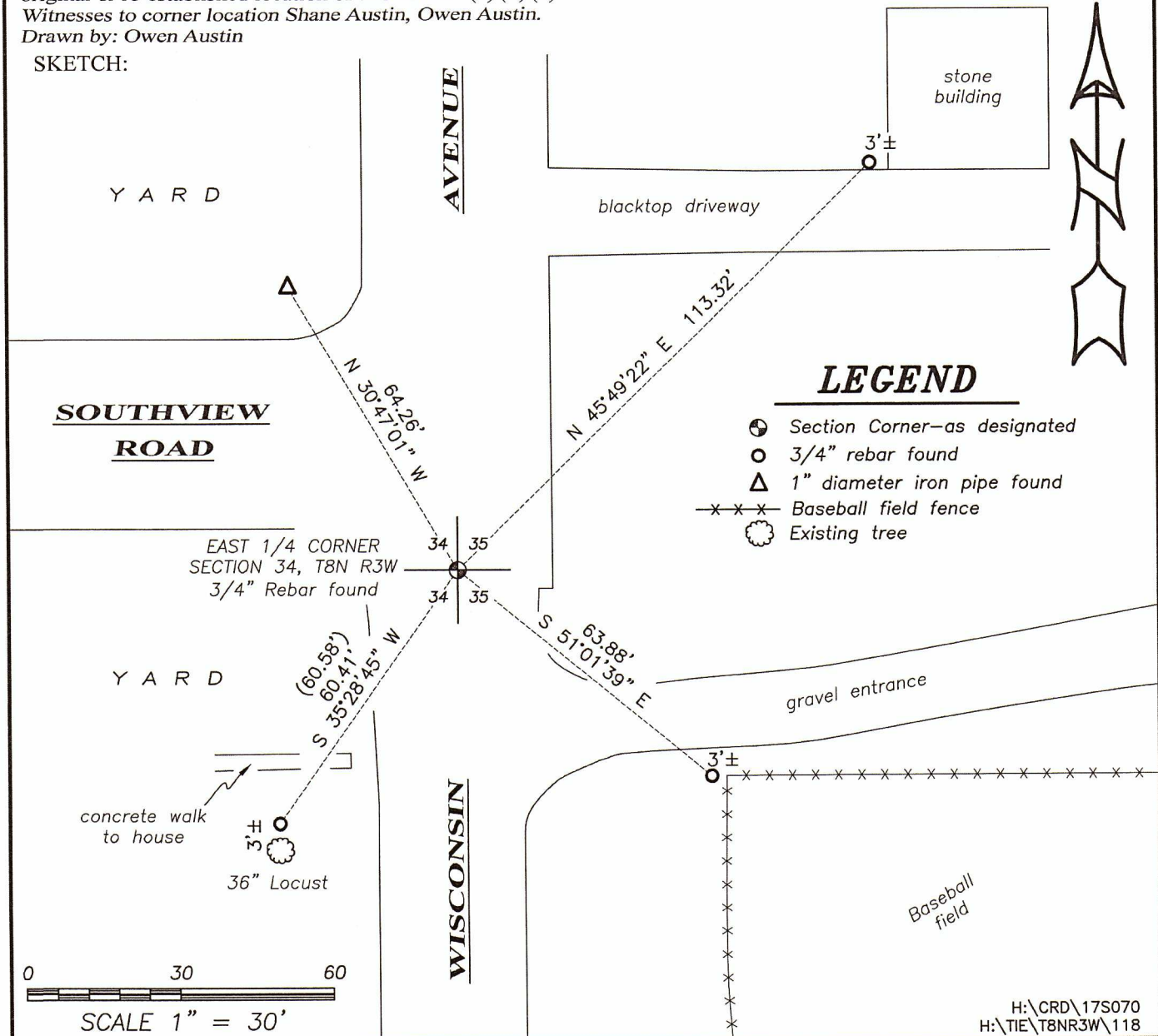
DESCRIPTION OF CORNER EVIDENCE FOUND: (b) (f) (g) (h)

I found a 3/4" Iron Rod and three witness corners Walsh set. I established one additional witness corner after I verified the Monument's location with G.P.S. and E.D.M. methods.

DESCRIPTION OF CORNER AND WITNESS MONUMENTS, references and accessories used to perpetuate the original or re-established location of this corner. (c) (d) (e)

Witnesses to corner location Shane Austin, Owen Austin.
 Drawn by: Owen Austin

SKETCH:



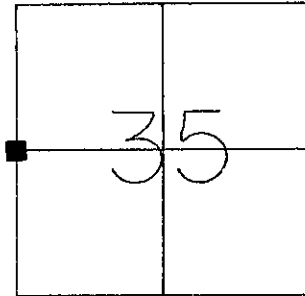
GRANT COUNTY

U.S. PUBLIC LAND SURVEY MONUMENT RECORD

TYPE OF MONUMENT: 3/4" X24" Iron Rod
 TIES ARE AS INDICATED ON SKETCH

WITNESSES TO CORNER LOCATION

Sean M. Walsh
Christopher G. Reedy
Derrick Tracey



CORNER LOCATION
 Section 35, T 8 N, R 3 W
 Town of Boscobel

BASIS FOR MONUMENT LOCATION

Corner was re-established by L. Schmitt in 1977. The monument which was set in 1977 was used again in 1987 by R. Marks for his preparation of CSM #267.

Subsequent to the preparation of CSM #267 the monument was destroyed during street reconstruction. Prior to the street reconstruction the corner was tied by the City Engineer.

I re-established the position for the corner from the ties taken by the City Engineer which fit very well with the data recorded by L. Schmitt in 1977 and the data recorded by R. Marks in 1987.

I have monumented and perpetuated this corner in accordance with the information contained hereon and this information is correct and true to the best of my knowledge and belief.

- - 3/4" X 24" Iron Rod set at corner
- - 3/4" X 24" Iron Rod set as tie

Tie distances were measured horizontally by E.D.M.

TIE SKETCH

S/S 42" Chinese Elm

99.66'

LAWN

SOUTHVIEW ROAD

LAWN

60.58'

N/S 21" Locust

AVENUE

WISCONSIN

