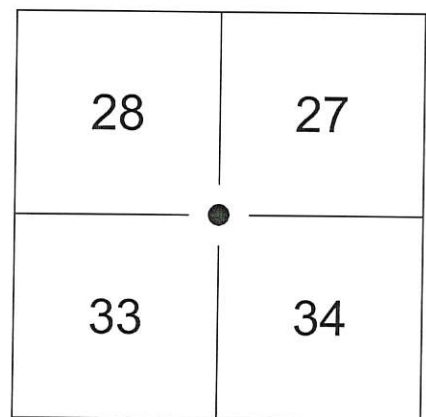


FOR GRANT COUNTY, WISCONSIN U.S. PUBLIC LAND SURVEY MONUMENT RECORD

Note: This form is intended and designed to fulfill all requirements of Wisconsin Administrative Code, Chapter AE-7.08, U.S. Public Land Survey Monument Record (3)(a)(b)(c)(d)(e)(f)(g)(h)(i). Use additional sheets if necessary.

(a) The Section Corner common to Sections 27, 28, 33, and 34, Township 8 North, Range 3 West, 4th Principal Meridian



Rectangular Coordinate System: Wisconsin County Coordinate System, Grant County Zone

Grid Coordinates: Y: 627,839.74' X: 814831.14'

Horizontal Datum: NAD83(2011)

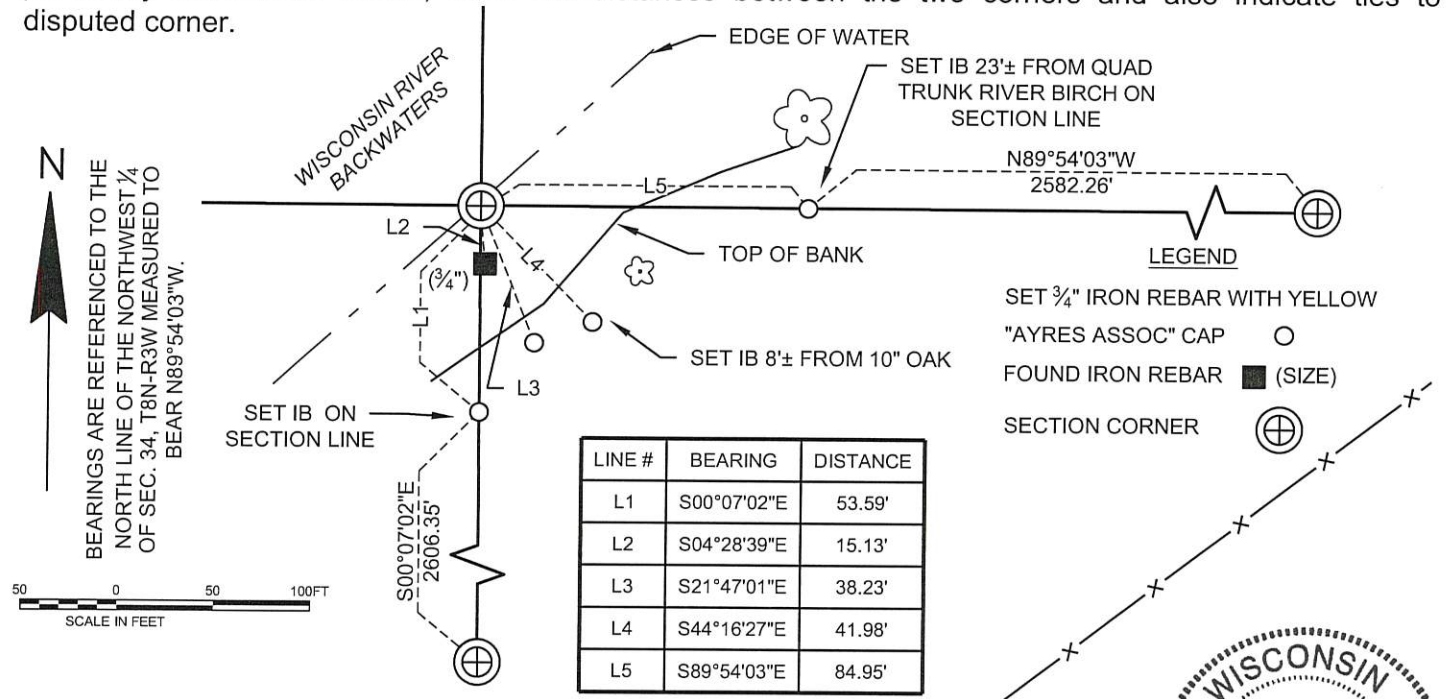
(b)(f)(g)(h) Description of monument found at this corner and if it was accepted, state all evidence (material, testimonial, occupational, plats records, other monuments) used as a basis for accepting. If not accepted or nothing was found, state evidence used as basis for establishing location and what was set. If re-established through lost corner proportionate methods, indicate all monuments, distances and directions used.

April 20, 1977 - Laurence E. Schmit set a 1 1/4" x 24" Iron Pipe and set witness monuments.

August 13, 1990 - Matthew J. Janiak found the 1 1/4" Iron Pipe and one witness monument. Set new witness monuments.

November 15, 2018 - Ayres Associates found the 1 1/4" Iron Pipe and one witness monument. Accepted the 1 1/4" Iron Pipe and established new witness monuments as shown.

(c)(d)(e) Plan view of corner with ties to at least four (4) witness monuments. If in disagreement with previously established corner, show the distances between the two corners and also indicate ties to disputed corner.



(I) Certify that the corner location on this record was determined by me or under my direction and control and that this U.S. Public Land Survey Monument Record is correct and complete to the best of my knowledge and belief.



Christopher R. Badtke
 Christopher R. Badtke, WI Professional Land Surveyor S-3150 Date 11-15-2018

AUG 21 1990

1161

GRANT COUNTY GOVERNMENT CORNER RECORD

S W CORNER, SECTION 27, TOWNSHIP 8 NORTH, RANGE 3 EAST - WEST,
TOWN, CITY OR VILLAGE OF BOSCOBEL, RICHLAND CO.

TYPE OF MONUMENT: 1" IRON PIPE FOUND ELEVATION - M.S.L. DATUM _____

STATE PLANE COORDINATES: N _____

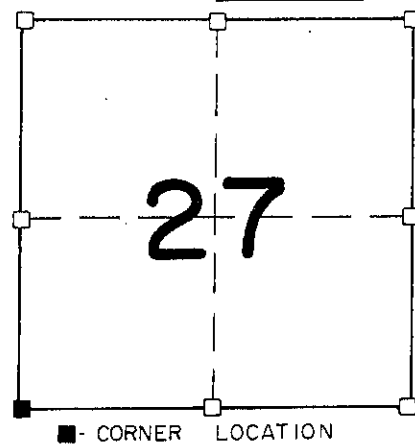
WISCONSIN SOUTH ZONE E _____

WITNESSES TO CORNER LOCATION

SEAN M. WALSH

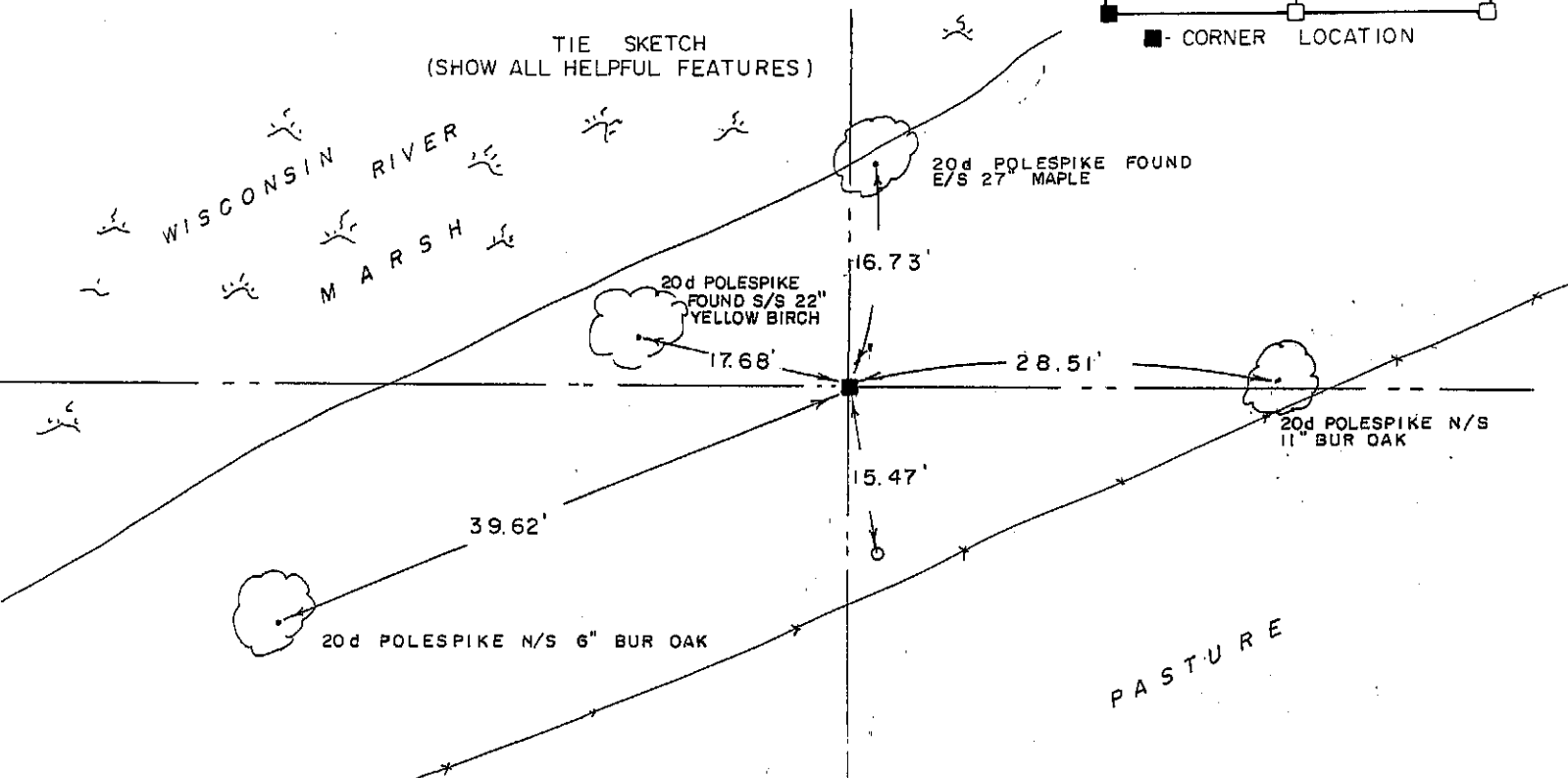
PATRICK J. DEDERICH

SECTION 27, T 8 N, R 3 EW
TOWN OF BOSCOBEL



NORTH

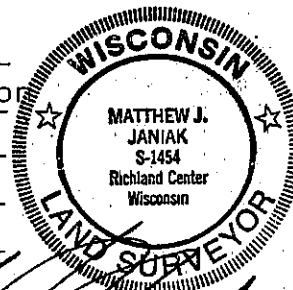
TIE SKETCH
(SHOW ALL HELPFUL FEATURES)



SURVEYOR'S CERTIFICATE
STATE OF WISCONSIN)
RICHLAND COUNTY)SS

SEAL S-1454

I, Matthew J. Janiak, DO HEREBY CERTIFY THAT I have
perpetiated the above corner and that the information
contained hereon is correct to the best of my
knowledge, belief and information.



DATED THIS 13th DAY OF August, 19 90

Matthew J. Janiak
REGISTERED LAND SURVEYOR

CORNER CODE

