

U.S. PUBLIC LAND SURVEY MONUMENT RECORD - GRANT COUNTY, WI

Section 34, Town 8 North Range 3 West, Town of Boscobel (a)

NOTE: This form is intended and designed to fulfill all requirements of the Wisconsin Administrative Code Chapter A-E 7.08, U.S. Public Land Survey Monument Record (3) (a) (b) (c) (d) (e) (f) (g) (h) (i).

CERTIFICATE: (i)

I, Aaron J. Austin, Wisconsin Professional Land Surveyor, do hereby certify that the corner location on this record was determined by me and/or under my direct supervision and that this U.S. Public Land Survey Monument Record is correct and complete to the best of my knowledge and belief.

Dated this 20th day of June, 2019.

Aaron J. Austin
Aaron J. Austin, S-2922



⊕ = CORNER LOCATION

Grant County Coordinates:
NAD 83 (2011)
Northing: 627,835.19
Easting: 817,498.37

HISTORY OF CORNER ESTABLISHMENT:

Original corner was set in 1833 by Henry Parke.
Matthew Janiak prepared a Survey Monument Record dated 8/13/1990

DESCRIPTION OF CORNER EVIDENCE FOUND: (b) (f) (g) (h)

I found the monument mentioned by Janiak along with three of his witness corners. I set an additional witness corner after I verified the monument's location with G.P.S. and E.D.M. methods.

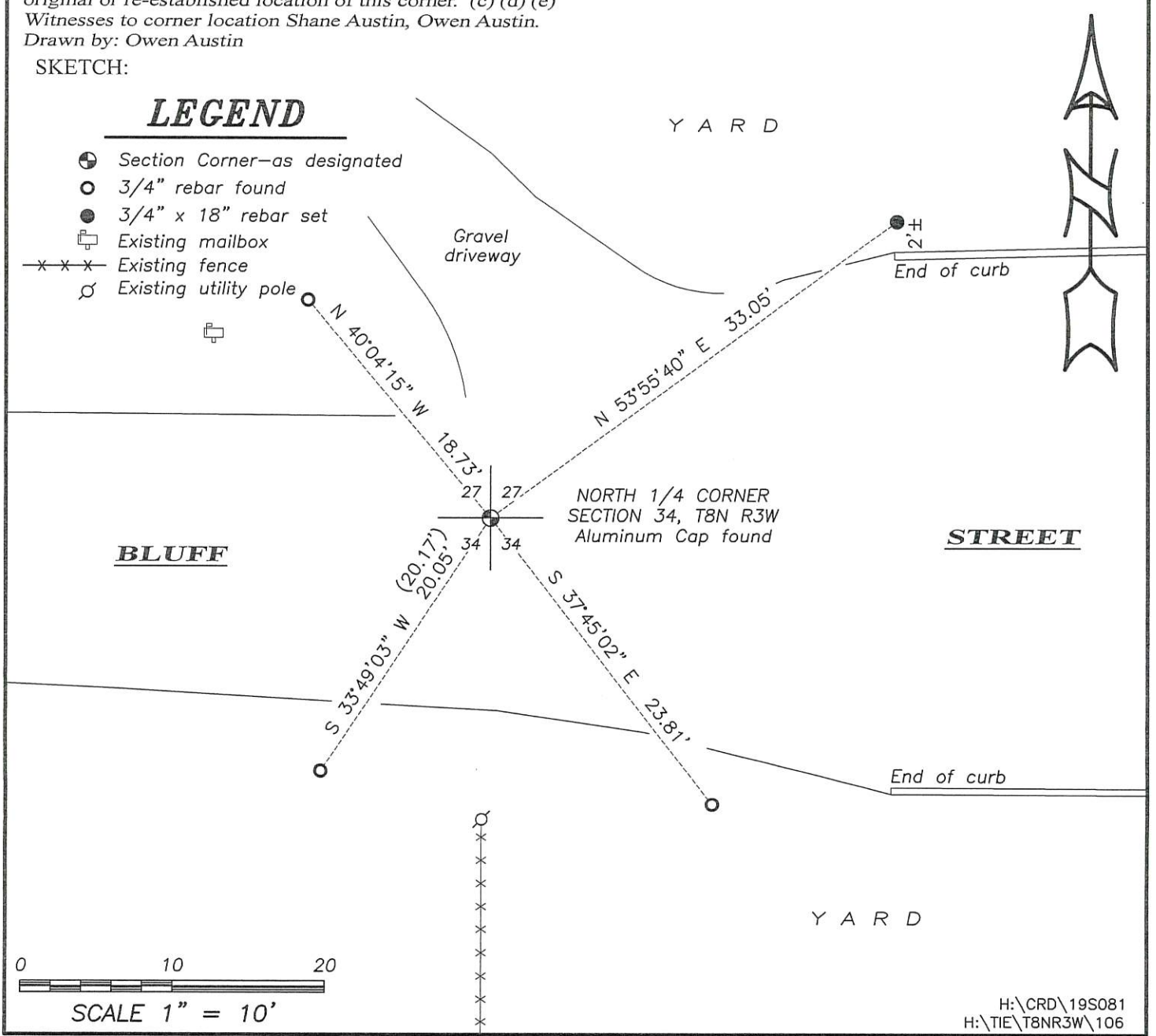
DESCRIPTION OF CORNER AND WITNESS MONUMENTS: references and accessories used to perpetuate the original or re-established location of this corner. (c) (d) (e)

Witnesses to corner location Shane Austin, Owen Austin.
Drawn by: Owen Austin

SKETCH:

LEGEND

- ⊕ Section Corner—as designated
- 3/4" rebar found
- 3/4" x 18" rebar set
- ☐ Existing mailbox
- x-x-x- Existing fence
- ⊗ Existing utility pole



AUG 21 1990

GRANT COUNTY

GOVERNMENT CORNER RECORD

S 1/4 CORNER, SECTION 27, TOWNSHIP 8 NORTH, RANGE 3 EAST - WEST,
TOWN, ~~CITY OR VILLAGE~~ OF BOSCOBEL, RICHLAND CO.

TYPE OF MONUMENT: ALUMINUM CAP FOUND ELEVATION - M.S.L. DATUM _____

STATE PLANE COORDINATES: N _____

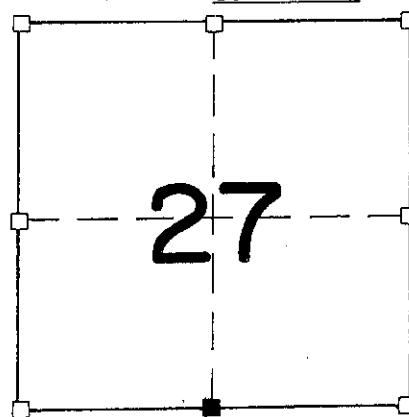
WISCONSIN SOUTH ZONE E _____

WITNESSES TO CORNER LOCATION

SEAN M. WALSH

PATRICK J. DEDERICH

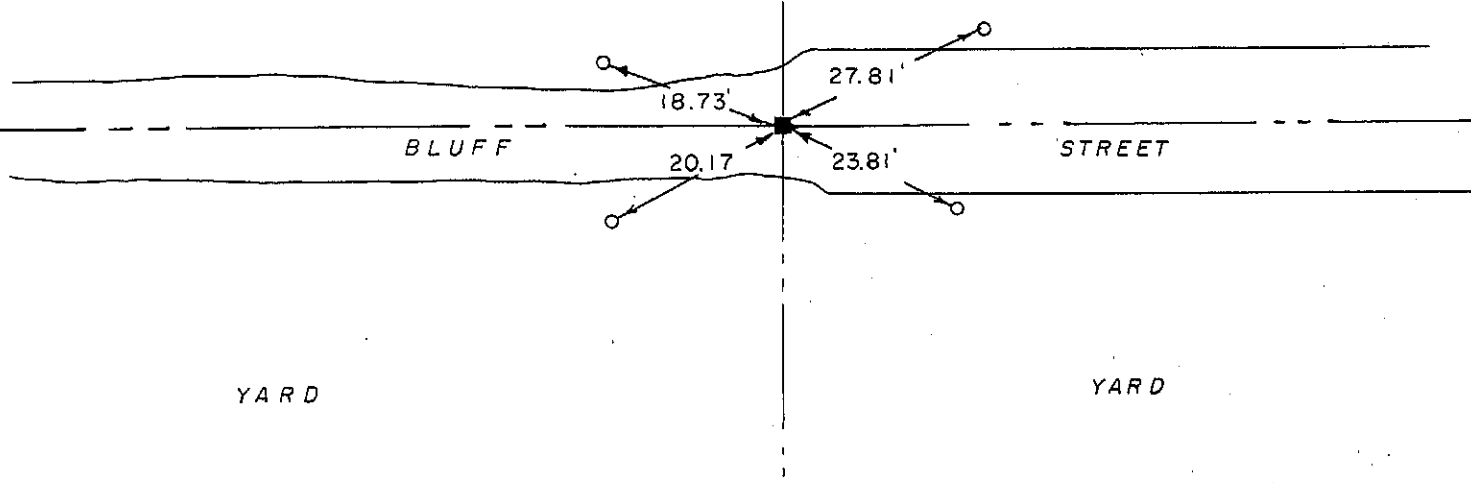
SECTION 27, T. 8 N, R. 3 EW
TOWN OF BOSCOBEL



NORTH

TIE SKETCH
(SHOW ALL HELPFUL FEATURES)

YARD



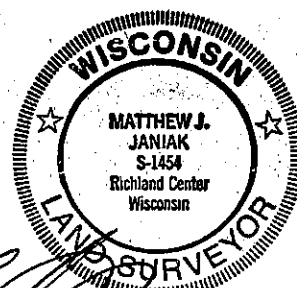
YARD

YARD

SURVEYOR'S CERTIFICATE
STATE OF WISCONSIN)
RICHLAND COUNTY)SS

SEAL S-1454

I, Matthew J. Janiak, DO HEREBY CERTIFY THAT I have
perpetuated the above corner and that the information
contained hereon is correct to the best of my
knowledge, belief and information.



DATED THIS 13TH DAY OF August, 1990

REGISTERED LAND SURVEYOR

CORNER CODE

