

U.S. PUBLIC LAND SURVEY MONUMENT RECORD - GRANT COUNTY, WI

Section 27, Town 8 North Range 3 West, Town of Boscobel (a)

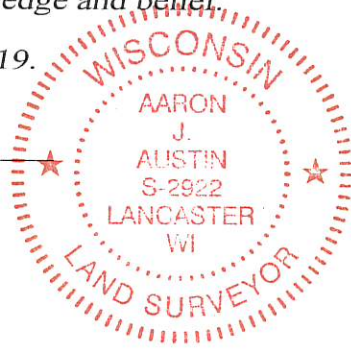
NOTE: This form is intended and designed to fulfill all requirements of the Wisconsin Administrative Code Chapter A-E 7.08, U.S. Public Land Survey Monument Record (3) (a) (b) (c) (d) (e) (f) (g) (h) (i).

CERTIFICATE: (i)

I, Aaron J. Austin, Wisconsin Professional Land Surveyor, do hereby certify that the corner location on this record was determined by me and/or under my direct supervision and that this U.S. Public Land Survey Monument Record is correct and complete to the best of my knowledge and belief.

Dated this 12th day of March, 2019.

Aaron J. Austin
Aaron J. Austin, S-2922



Grant County Coordinates:
NAD 83 (2011)
Northing: 627844.56
Easting: 820153.74

HISTORY OF CORNER ESTABLISHMENT:

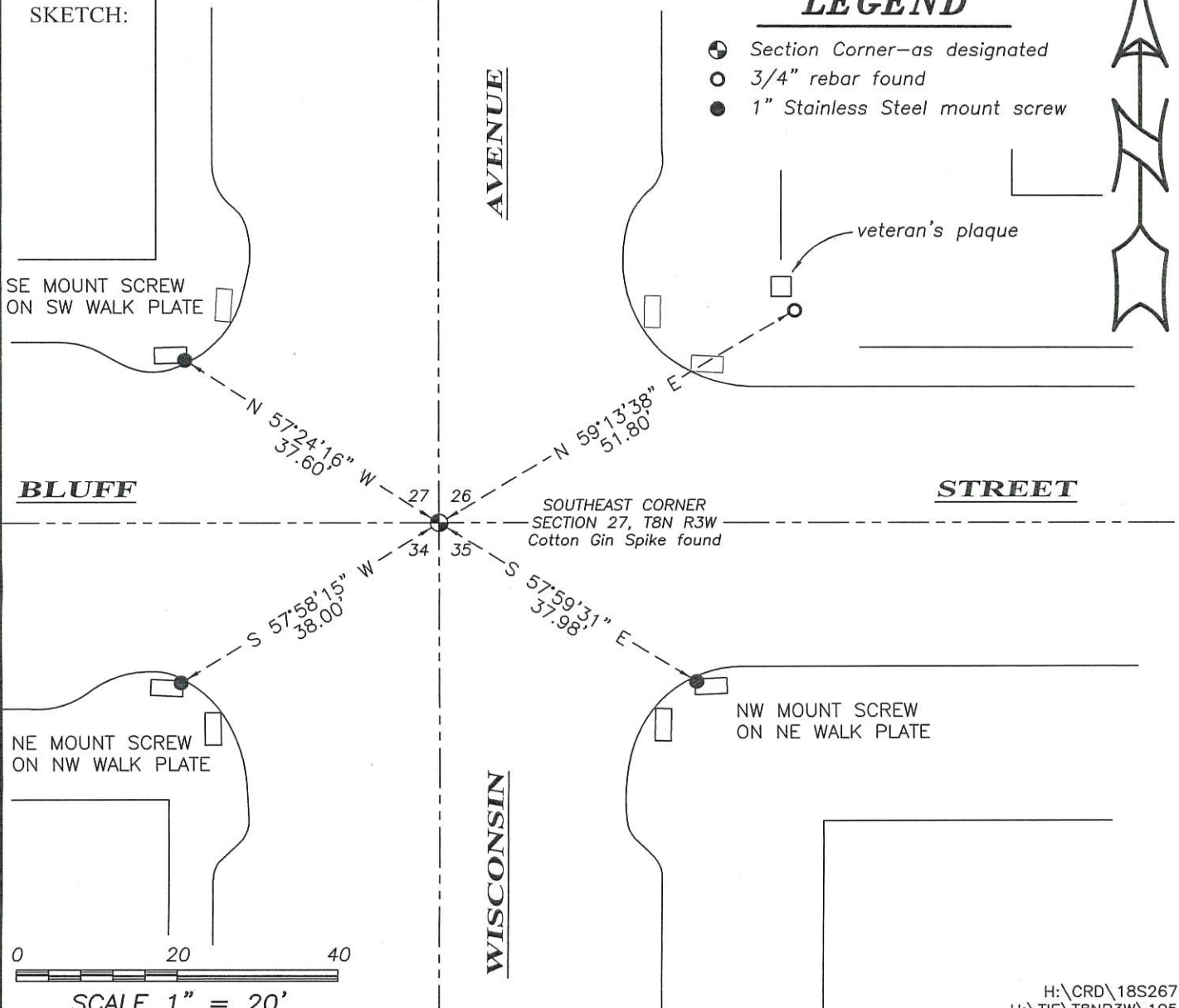
Bruce Bowden prepared a Survey Monument Record for this corner dated 7-9-1999 for a found 2" brass capped monument. Several surveyors have accepted this monument over the years. Stan King showed and accepted a Star Nail (Cotton Gin Spike) at this corner on C.S.M. No. 1848, C.S.M. No. 1863 and a Plat of Survey dated 6-5-2017 filed in Book 40, Page 31.

DESCRIPTION OF CORNER EVIDENCE FOUND: (b) (f) (g) (h)

I found and accepted the Cotton Gin Spike (Star Nail) as referenced by Stan King. It appears to have replaced the 2" brass capped monument. I established three new witness corners after I verified the monument's location with G.P.S. and E.D.M. methods.

DESCRIPTION OF CORNER AND WITNESS MONUMENTS, references and accessories used to perpetuate the original or re-established location of this corner. (c) (d) (e)

SKETCH:



LEGEND

- ⊕ Section Corner—as designated
- 3/4" rebar found
- 1" Stainless Steel mount screw

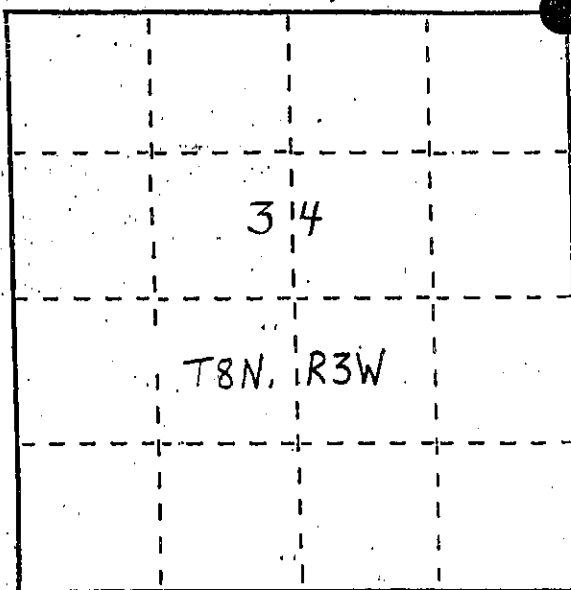


U. S. PUBLIC LAND SURVEY MONUMENT RECORD

INSTRUCTIONS: This record shall show the location of the corner and shall include all of the following nine elements (a through i).

- (a) Identify the corner by reference to the U.S. public land survey system.
- ⇒ Corner monument restored.

NORTHEAST QUARTER OF
SECTION 34, TOWN 8 NORTH,
RANGE 3 WEST,
CITY OF BOSCOBEL,
GRANT COUNTY, WISCONSIN.

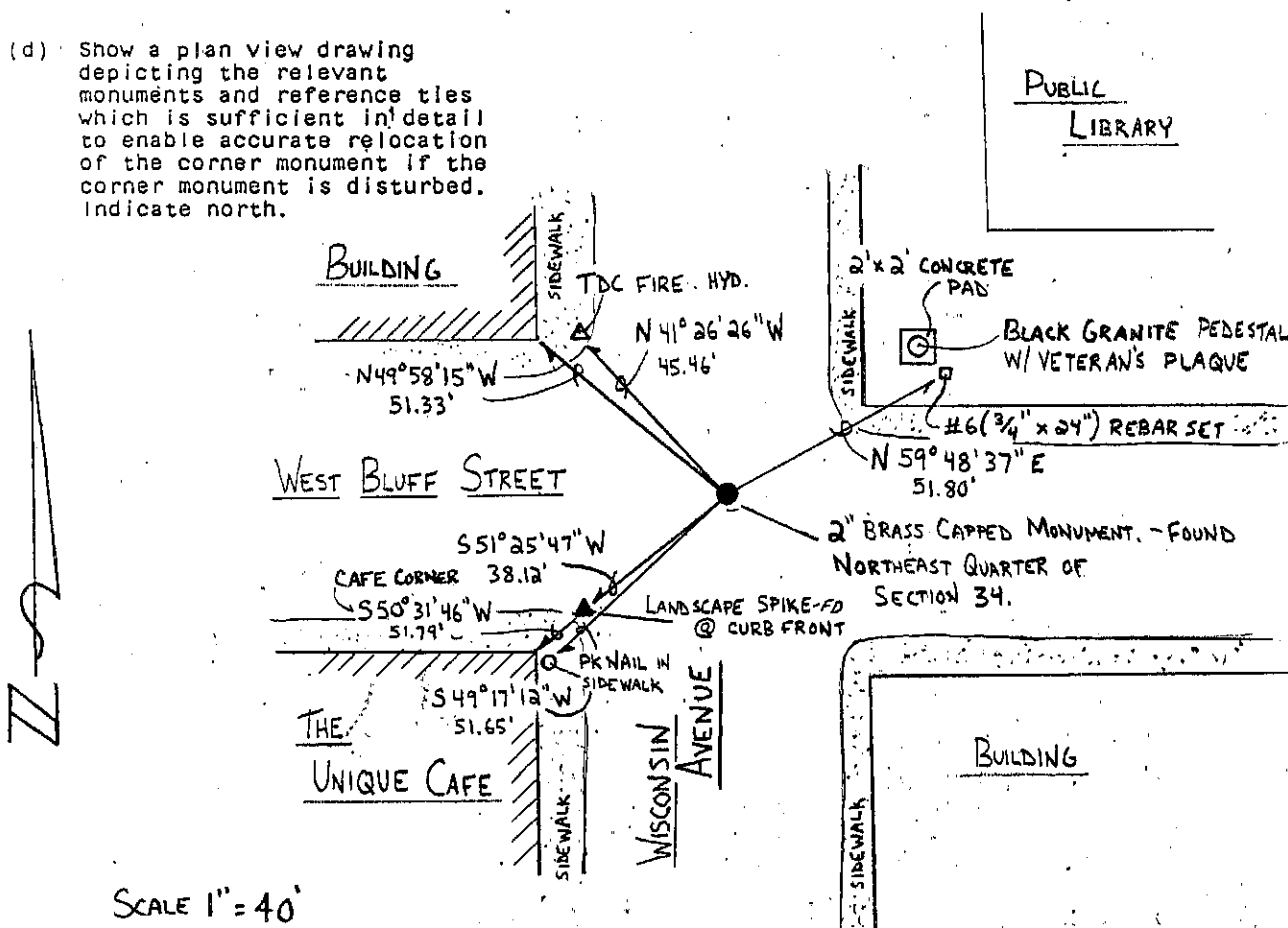


- (b) Describe any record evidence, monument evidence, occupational evidence, testimonial evidence or any other material evidence you considered, and whether the monument was found or placed.

A 2" BRASS CAPPED MONUMENT WAS FOUND, AS SHOWN ON PREVIOUS SURVEYS IN THE AREA, AND WAS ACCEPTED AS THE CORNER.

- (c) In the plan view drawing below, provide reference ties to at least 4 witness monuments, or, if the location is within a municipality, to at least 2 witness monuments. (Witness monuments shall be made of concrete, natural stone, iron or other equally durable material, ~~except~~ wood.) Describe witness monuments.

- (d) Show a plan view drawing depicting the relevant monuments and reference ties which is sufficient in detail to enable accurate relocation of the corner monument if the corner monument is disturbed. Indicate north.



SCALE 1" = 40'

Describe any material discrepancy between the location of the corner as restored or reestablished and the location of that corner as previously restored or reestablished by distance and direction. Show the discrepancy on the plan view drawing under (d), above. Show the distances between the corner as previously restored or reestablished and (1) the corner as restored or reestablished, and (2) to at least 2 of the witness monuments shown on the drawing in (d), above.

NONE.

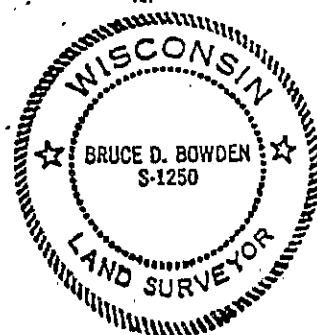
Was the corner restored through acceptance of (1) an obliterated evidence location, or, (2) a found perpetuated location?

2) A FOUND PERPETUATED LOCATION.

Was the corner reestablished through lost corner proportionate methods? If so, show the method, including the directions and distances to other public land survey corners used as evidence or used for proportioning in determining the corner location?

No.

Affix Land Surveyor Seal



BRUCE D. BOWDEN

(type or print name) certify that the corner location shown on this record was determined by me or under my direction and control, and that this U.S. Public Land Survey Monument Record is correct and complete to the best of my knowledge and belief.

Signature

Date

Bruce D. Bowden July 9, 1999