

# U.S. PUBLIC LAND SURVEY MONUMENT RECORD - GRANT COUNTY, WI

Section 24, Town 8 North Range 3 West, Town of Boscobel (a)

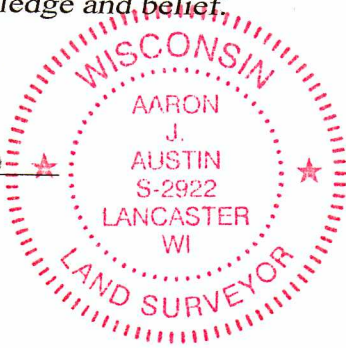
NOTE: This form is intended and designed to fulfill all requirements of the Wisconsin Administrative Code Chapter A-E 7.08, U.S. Public Land Survey Monument Record (3) (a) (b) (c) (d) (e) (f) (g) (h) (i).

**CERTIFICATE:** (i)

I, Aaron J. Austin, Wisconsin Professional Land Surveyor, do hereby certify that the corner location on this record was determined by me and/or under my direct supervision and that this U.S. Public Land Survey Monument Record is correct and complete to the best of my knowledge and belief.

Dated this 8th day of June, 2022.

*Aaron J. Austin*  
Aaron J. Austin, S-2922



⊕ = CORNER LOCATION

Grant County Coordinates:  
NAD 83 (2011)  
Northing: 638,339.70  
Easting: 830,584.25

HISTORY OF CORNER ESTABLISHMENT:

Original corner was set in 1832 by Lucius Lyon.  
Homer Ralph showed a Stone Monument on a Survey filed in Book G, Page 196 dated 10/24/1975.  
Ross Michaels found a Stone Monument and prepared a Survey Monument Record dated 4/21/1997.  
Roger Schneeberger tied to the Stone and prepared a Survey Monument Record dated 11/6/2002.

DESCRIPTION OF CORNER EVIDENCE FOUND: (b) (f) (g) (h)

Area was excavated for the installation of a runway. I was unable to recover the Stone. I set a 7/8" Rebar at the corner based upon existing markers of a Survey filed in Book 1, Page 33. See Plat of Survey prepared by me dated 6/7/2022 for those Monuments. I set four witness corners after I verified the Monument's location with G.P.S. and E.D.M. methods.

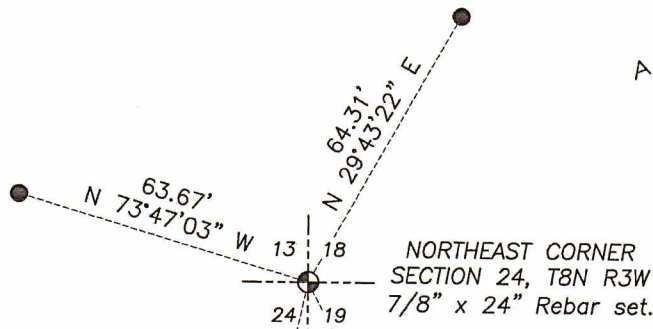
DESCRIPTION OF CORNER AND WITNESS MONUMENTS. references and accessories used to perpetuate the original or re-established location of this corner. (c) (d) (e)

Witnesses to corner location Shane Austin, Owen Austin.  
Drawn by Owen Austin

SKETCH:

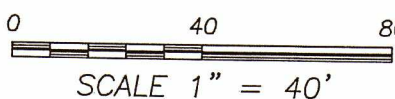
A I R P O R T

A I R P O R T



**LEGEND**

- ⊕ Section Corner—as designated
- 5/8" x 18" rebar set
- ⊙ Existing wood post



# U. S. PUBLIC LAND SURVEY MONUMENT RECORD

REC'D MAY 12 1997

**INSTRUCTIONS:**

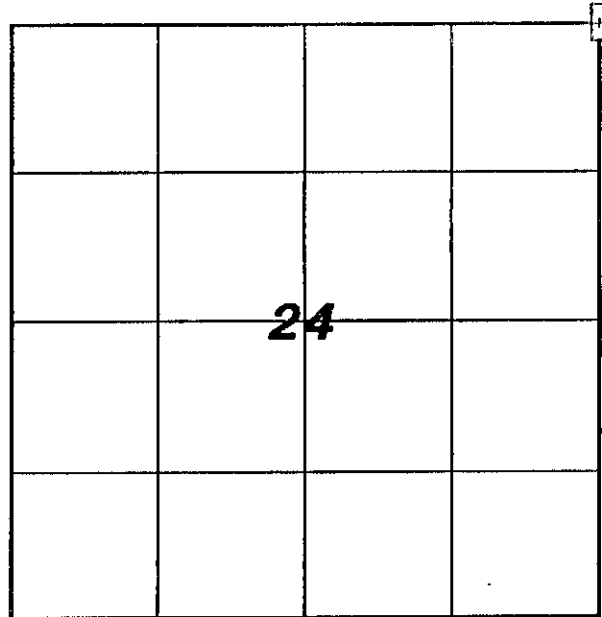
This record shall show the location of the corner and shall include all of the following nine elements (a through i).

(a) Identify the corner by reference to the U.S. public land survey system.

☒ - Corner monument restored

NE CORNER SECTION 24,  
T8N, R3W, GRANT COUNTY.

Date of Survey: April 8, 1997



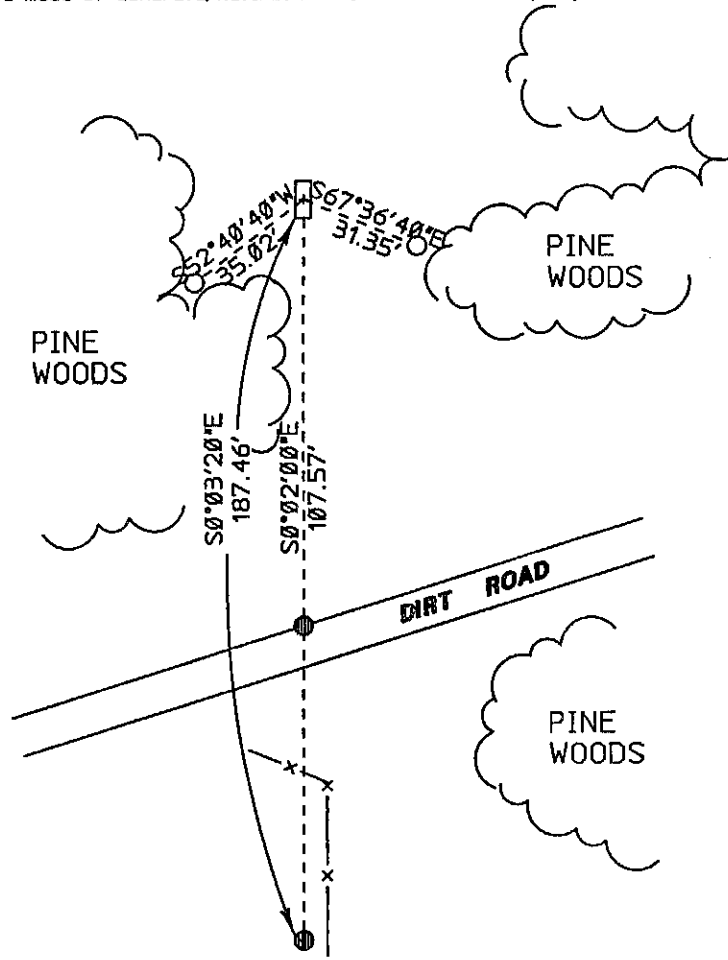
(b) Describe any record evidence, monument evidence, occupational evidence, testimonial evidence or any other material evidence you considered, and whether the monument was found or placed.

I found a limestone monument with chiseled "+" at the Northeast corner of Section 24. The stone (3'+ E-W by 12'+ N-S) is in good condition. The locations of two iron pipes found - see (d) below - closely agree with measurements as shown on a map by Homer D. Ralph, Jr. dated 10/24/75.

(c) In the plan view drawing below, provide reference ties to at least 4 witness monuments, or, if the location is within a municipality, to at least 2 witness monuments. (Witness monuments shall be made of concrete, natural stone, iron or other equally durable material.) Describe witness monuments.

(d) Show a plan view drawing depicting the relevant monuments and reference ties which is sufficient in detail to enable accurate relocation of the corner monument if the corner monument is disturbed. Indicate north.

- LEGEND**
- ☒ CHISELED "+" ON LIMESTONE
  - 1" IRON PIPE FOUND
  - 3/4" REBAR SET



any material discrepancy between the location of the corner as restored or reestablished and the location of that as previously restored or reestablished by distance and direction. Show the discrepancy on the plan view drawing under and (1) the corner as restored or reestablished, and (2) to at least 2 of the witness monuments shown on the drawing in (d), above.

No known discrepancy

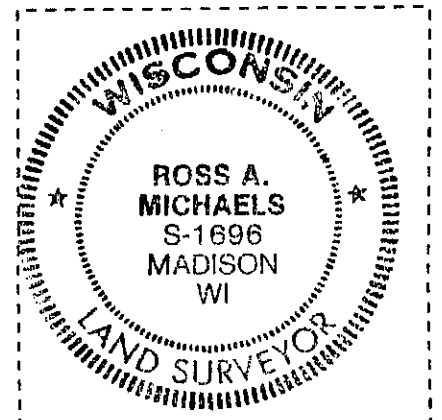
(f) Was the corner restored through acceptance of (1) an obliterated evidence location, or, (2) a found perpetuated location?

Found perpetuated location

(g&h) Was the corner reestablished through lost corner proportionate methods? If so, show the method, including the directions and distances to other public land survey corners used as evidence or used for proportioning in determining the corner location?

Not a lost corner

Affix Land Surveyor Seal



(i) I, Ross A. Michaels

(type or print name) certify that the corner location shown on this record was determined by me or under my direction and control and that this U.S. Public Land Survey Monument Record is correct and complete to the best of my knowledge and belief.

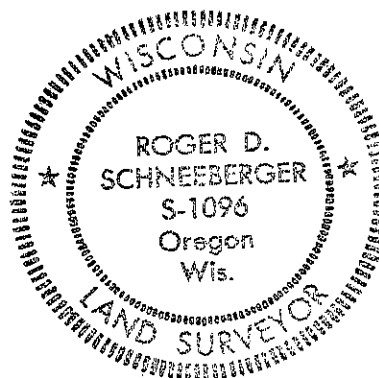
Ross A. Michaels April 21, 1997  
Signature Date

UPDATE: U.S. Public Land Survey Monument Record

I Roger D. Schneeberger, a registered land surveyor of the State of Wisconsin, have located and found monument and ties to the SE corner, Section 13, T8N, R3W, Town of Boscobel, Grant County, Wisconsin. All ties measure the same as on Ross A. Michaels tie sheet dated April 21, 1997.

Date 11-06-02

Signature Roger D. Schneeberger



**MEAD  
& HUNT**

Mead & Hunt, Inc.  
6501 Watts Road, Suite 101  
Madison, Wisconsin 53719-2700  
Phone: 608-273-6380  
Fax: 608-273-6391