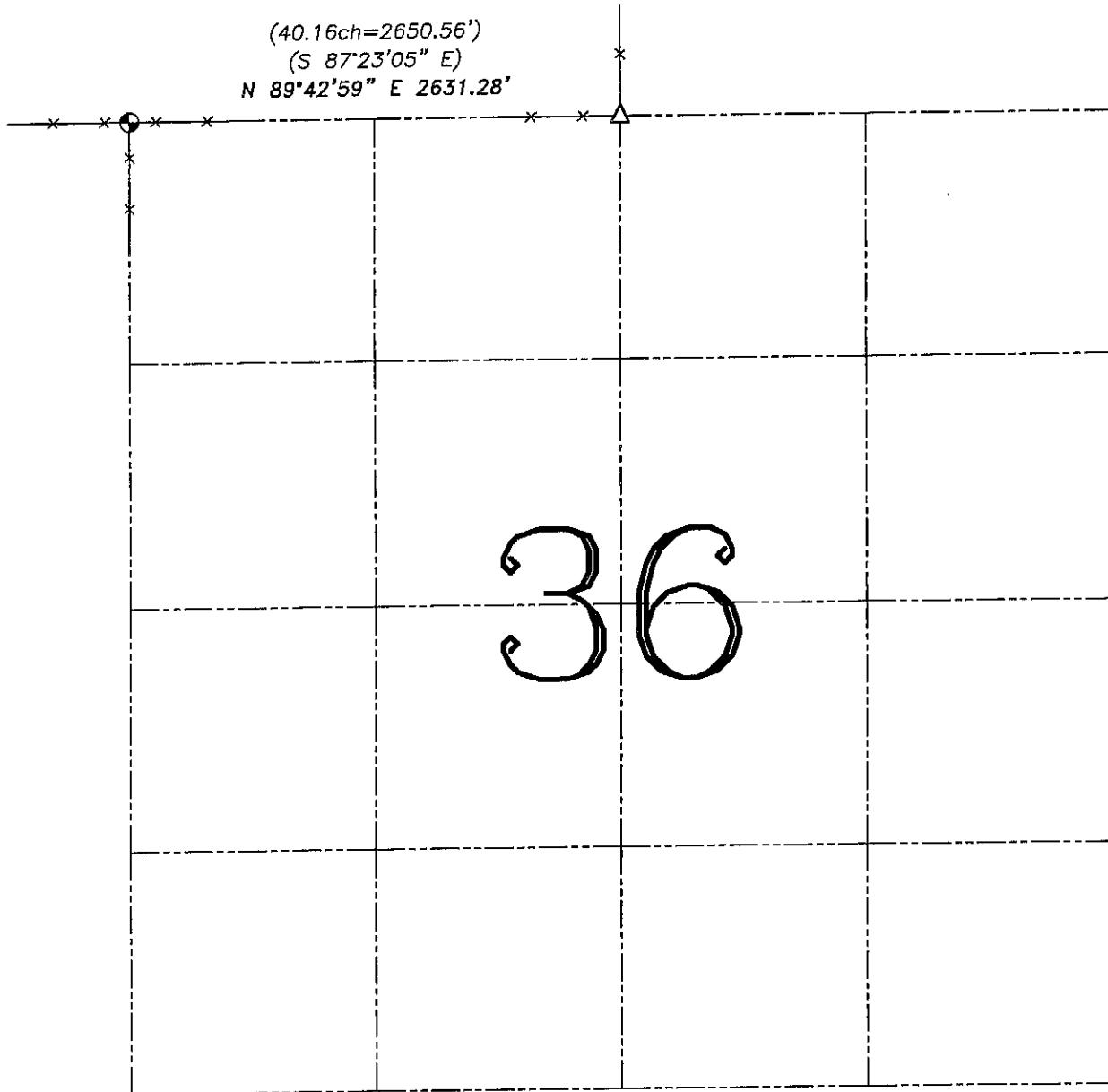


U.S. PUBLIC LAND SURVEY MONUMENT RECORD – GRANT COUNTY, WI

Summary of Section 36, Town 8 North, Range 2 West, Town of Watterstown



LEGEND

⊕ No. 8 x 30" rebar set with Grant County Aluminum Cap – wt=2.67#/l.f.

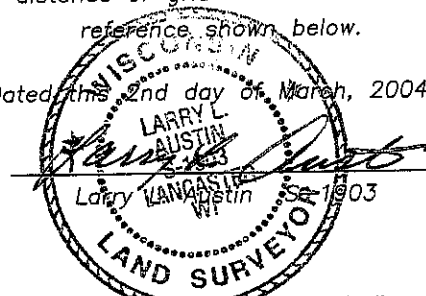
() Recorded as

—x— Approximate location of existing fence

△ 1" diameter iron pipe found

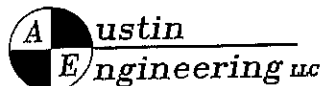
Relationship of all section corners to other section corners shall be shown hereon by bearing and distance or grid coordinates. Bearing reference shown below.

Dated this 2nd day of March, 2004



Bearings referenced to the North line of the NE 1/4 of this Section, which is assumed to bear N 89°42'59" E.

SKETCH NOT TO SCALE



4211 HWY 81 E, LANCASTER, WI 53813
 PHONE 608-723-6363 FAX 608-723-6702

JOB NUMBER 04S342
 FIELDBOOK: TSDR, 2322
 G:\T8NR2W\27
 H:\TIE\T8NR2W\36SUM

DRAWN BY: SW AUSTIN
 APPROVED: LL AUSTIN