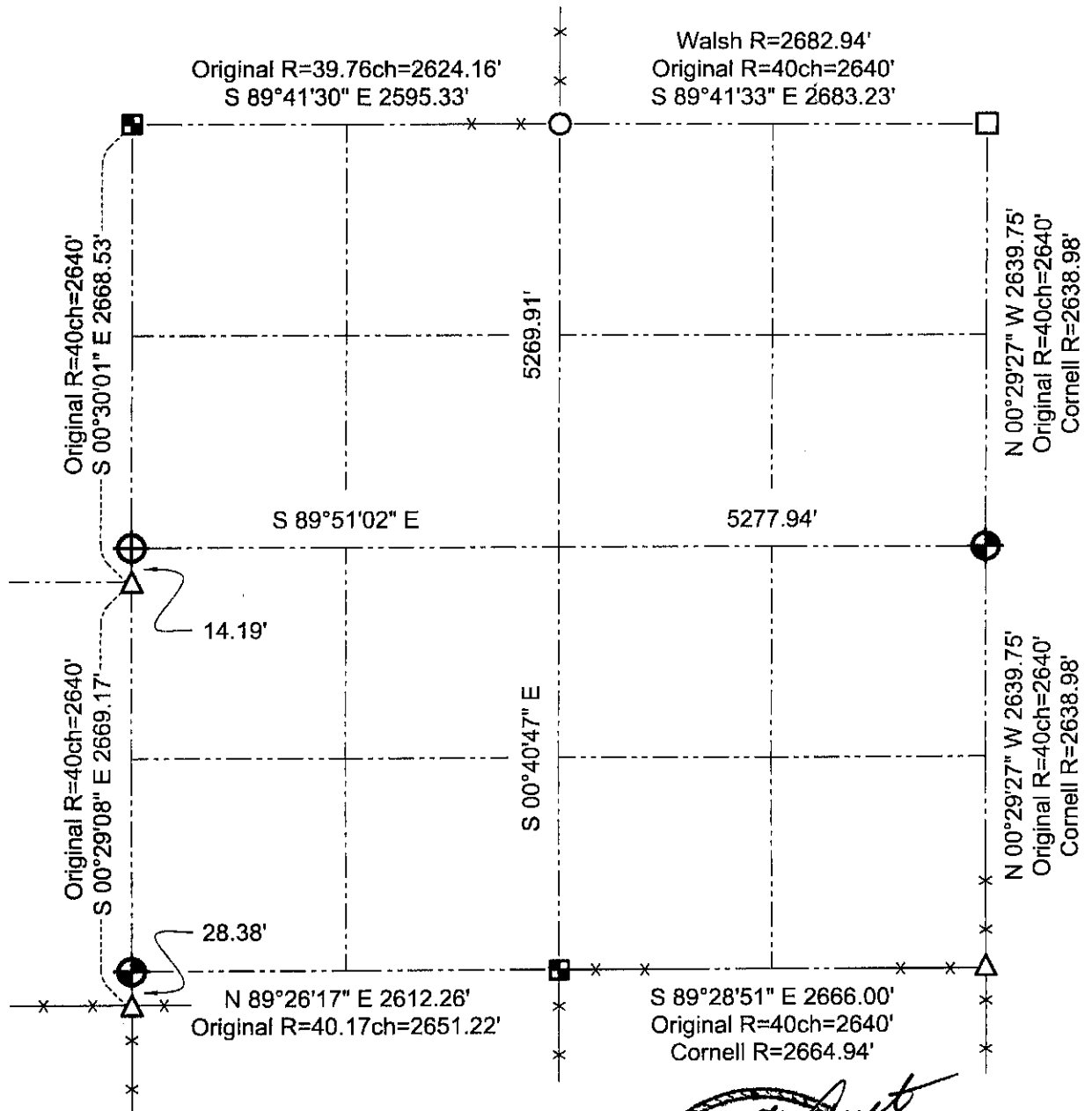


GRANT COUNTY SECTION SUMMARY

19
-
8N
-
2W
SECTION TOWN RANGE



LEGEND

- Number 8 x 30" rebar set with Grant County Aluminum Cap
- Number 8 rebar found with Grant County Aluminum Cap
- Existing Stone monument
- Number 6 Iron bar found
- 2" Iron pipe found
- 1" Iron pipe found



Relationships of all section corners to other section corners shall be shown hereon by bearing and distance or grid coordinates.
~Bearing reference below~



Bearings referenced to the East-West Quarter line of Section 19, which is assumed to bear S 89°51'02" E.

AUSTIN ENGINEERING, LLC
 4211 HWY 81 E, LANCASTER, WI 53813
 PHONE 608-723-6363 FAX 608-723-6702

FIELDBOOK: SDR33, 2027
 G:\T8NR2W\19
 C:\SC14\SWA\TIE\T8NR2W\19SUM

DRAWN BY: SW AUSTIN
 APPROVED: LL AUSTIN
 CREW: BS - SB - SA - TF