

U. S. PUBLIC LAND SURVEY MONUMENT TIE SHEET - GRANT COUNTY WISCONSIN.

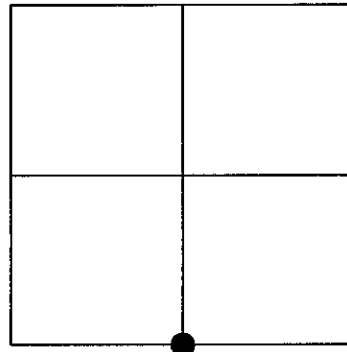
Section # 31 , Town 8 North, Range 2 West, Town of
Watterstown.

Certificate

I, Craig E Hardy, do hereby certify that the corner location on this record was determined by me and/or under my direct supervision and that this U.S. public land survey monument record is correct and complete to the best of my knowledge and belief.

Dated this 21st day of March, 2007.

Craig E Hardy
Craig E. Hardy, WI RLS #2304



History of Corner Establishment

Original corner was set in 1832. Original notes call for a 7" Hickory tree, typical life for a hickory tree is 70 years. No evidence could be found of the original tree.

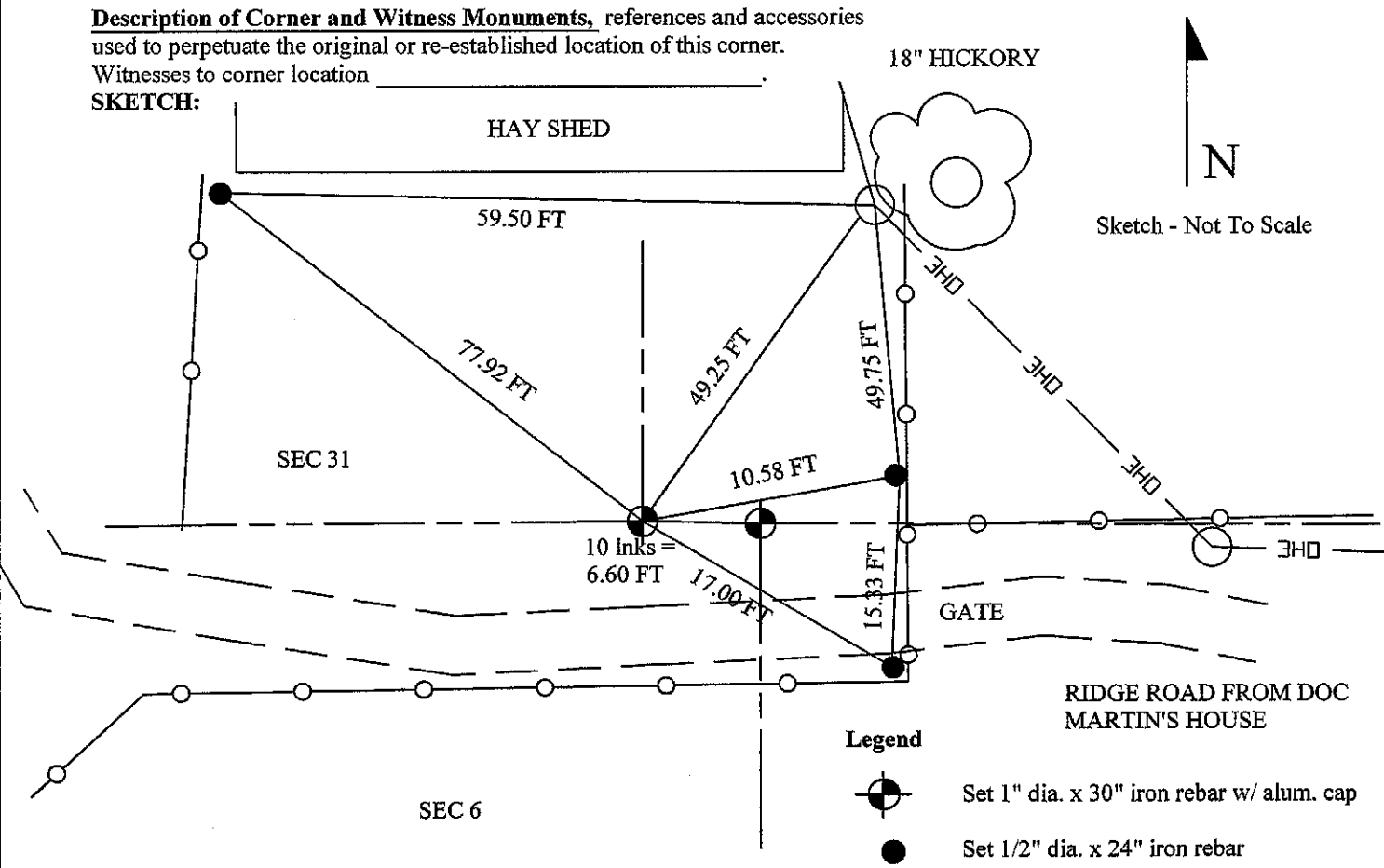
Description of Corner Evidence Found:

I re-established this corner based on the occupation of fences between Hardy/Martin in the southwest quarter of section 31 and Baumeister/Nelson in the north half of section 6. I set a new county aluminum monument at this location as acceptance of the occupancy of section 31 and section 6.

Description of Corner and Witness Monuments, references and accessories used to perpetuate the original or re-established location of this corner.

Witnesses to corner location _____

SKETCH:



Corner Number - 132