

# U.S. PUBLIC LAND SURVEY MONUMENT RECORD - GRANT COUNTY, WI

Section 35, Town 8 North Range 2 West, Town of Watterstown (a)

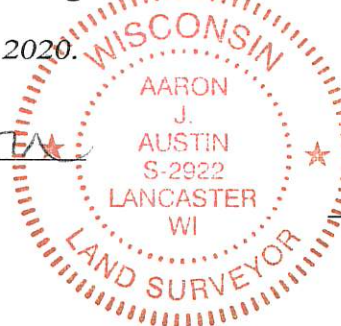
NOTE: This form is intended and designed to fulfill all requirements of the Wisconsin Administrative Code Chapter A-E 7.08, U.S. Public Land Survey Monument Record (3) (a) (b) (c) (d) (e) (f) (g) (h) (i).

**CERTIFICATE: (i)**

I, Aaron J. Austin, Wisconsin Professional Land Surveyor, do hereby certify that the corner location on this record was determined by me and/or under my direct supervision and that this U.S. Public Land Survey Monument Record is correct and complete to the best of my knowledge and belief.

Dated this 25th day of August, 2020.

*Aaron J. Austin*  
Aaron J. Austin, S-2922



⊕ = CORNER LOCATION

Grant County Coordinates:  
NAD 83 (2011)  
Northing: 622,496.15  
Easting: 851,897.46

HISTORY OF CORNER ESTABLISHMENT:

Corner was set in 1832.  
Richard Marks set a 3/4" rebar and prepared a Survey Monument Record for the Northwest corner of Section 2, T7N, R2W dated 12/24/1991.  
Sean Walsh set a 3/4" Rebar and prepared a Survey Monument Record dated 8/11/1997.

DESCRIPTION OF CORNER EVIDENCE FOUND: (b) (f) (g) (h)

I found and accepted Marks 3/4" Rebar. I established four witness corners after I verified the Monument's location with G.P.S. and E.D.M. methods.

DESCRIPTION OF CORNER AND WITNESS MONUMENTS, references and accessories used to perpetuate the original or re-established location of this corner. (c) (d) (e)

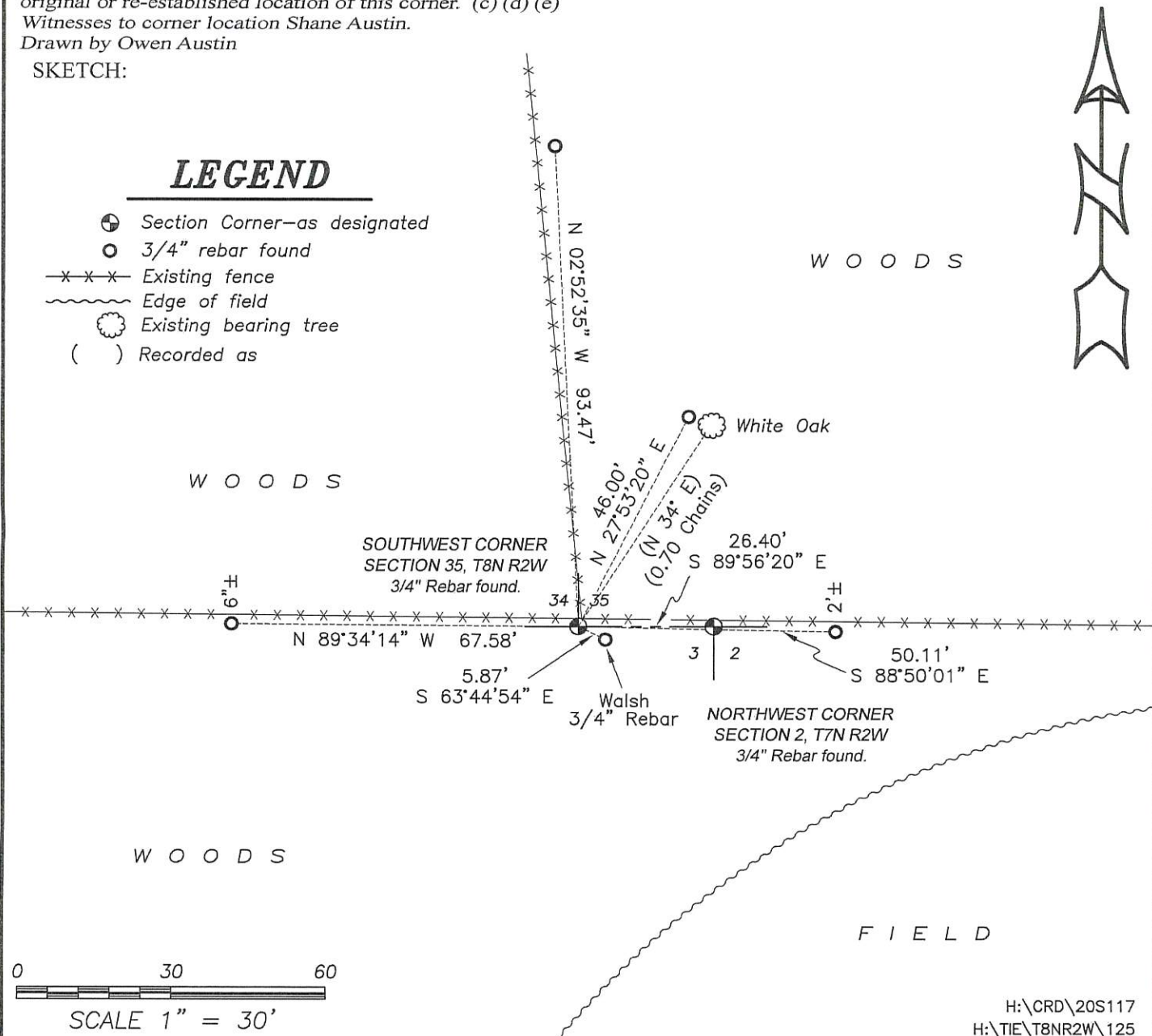
Witnesses to corner location Shane Austin.

Drawn by Owen Austin

SKETCH:

## LEGEND

- ⊕ Section Corner—as designated
- 3/4" rebar found
- x-x-x- Existing fence
- ~~~~~ Edge of field
- ⊙ Existing bearing tree
- ( ) Recorded as

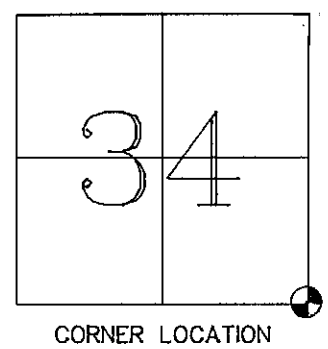


REC'D AUG 19 1997

# GRANT COUNTY U.S. PUBLIC LAND SURVEY MONUMENT RECORD

TYPE OF MONUMENT: 3/4" x 24" Iron Rod set  
TIES ARE AS INDICATED ON SKETCH

WITNESSES TO CORNER LOCATION  
Reginald Jaquish  
Christopher Ruetten



CORNER LOCATION

BASIS FOR MONUMENT LOCATION

SOUTHEAST SECTION 34 T8N R2W

I have monumented and perpetuated this corner in accordance with the information contained hereon and this information is true and correct to the best of my knowledge and belief.

I have accepted the 36" white oak shown hereon as the one documented on the Original Gov't. survey and monumented and perpetuated as shown hereon.

### TIE SKETCH

