

# U.S. PUBLIC LAND SURVEY MONUMENT RECORD

Section 36, Town 8 North Range 2 West, Town of Watterstown, Grant County, Wisconsin

## CERTIFICATE

I, Larry L. Austin, do hereby certify that the corner location on this record was determined by me and/or under my direct supervision and that this U.S. public land survey monument record is correct and complete to the best of my knowledge and belief.



*Larry L. Austin*  
Larry L. Austin, S-1903



## HISTORY OF CORNER

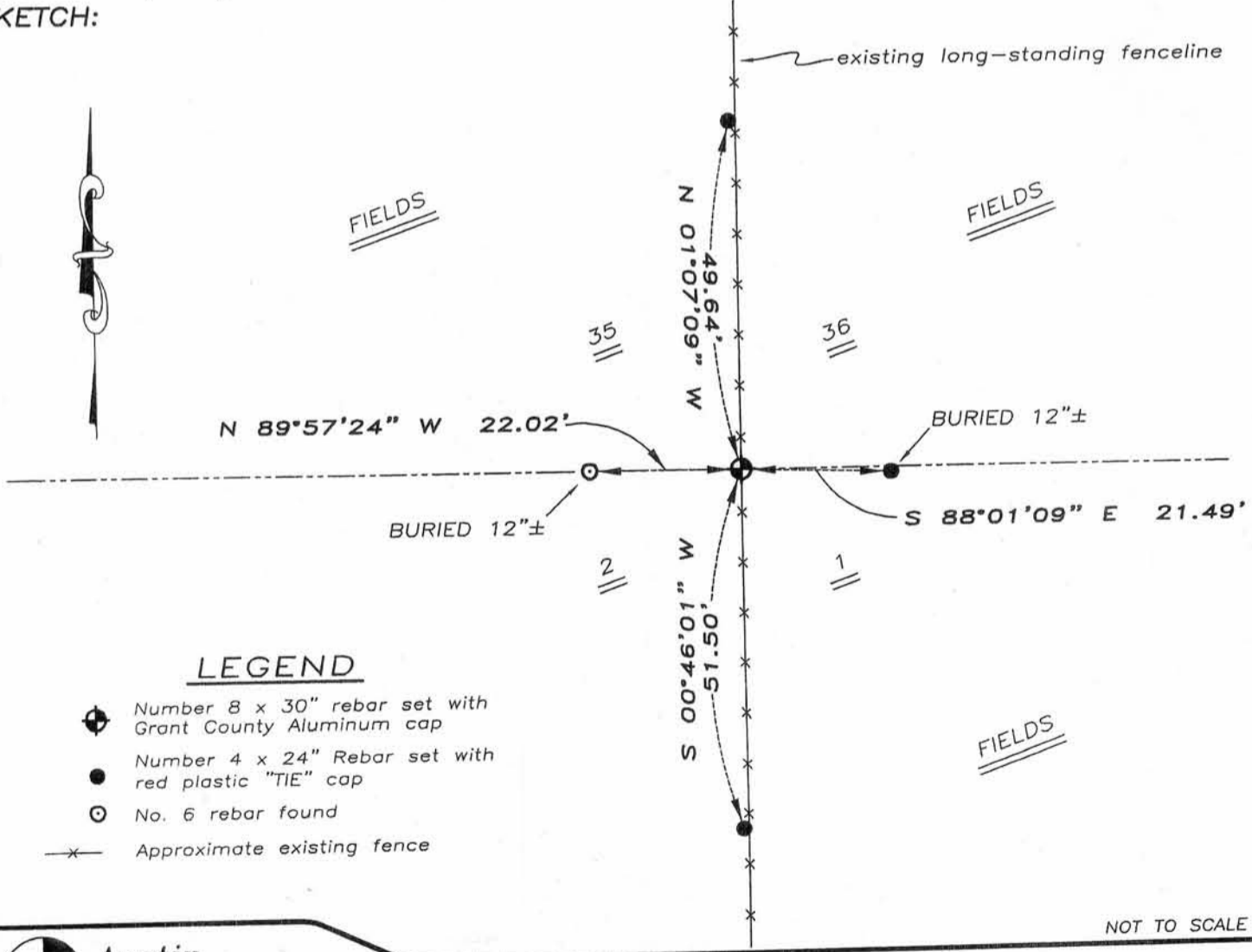
Corner was originally set by Lyon. In 1991 Richard Marks set and tied a No. 6 iron bar. No other record of the corner was found.

## CORNER EVIDENCE FOUND

I found Marks' No. 6 rebar and did not accept it. I set the Northing of the corner on-line between the South 1/4 of Section 35 and South 1/4 of Section 36. I set the Easting in a North-South long-standing fence. This location falls within three feet of being on-line with the West line of the NW 1/4 of Section 36. This location fits other occupied locations throughout Section 36. Verified this location using EDM & GPS methods.

**DESCRIPTION OF CORNER AND WITNESS MONUMENTS,** references and accessories used to perpetuate the original or re-established location of this corner. Witnesses to monument location Bobby Sedgwick & Brad Digman & Shane Austin

## SKETCH:



## LEGEND

- Number 8 x 30" rebar set with Grant County Aluminum cap
- Number 4 x 24" Rebar set with red plastic "TIE" cap
- No. 6 rebar found
- x— Approximate existing fence

NOT TO SCALE



**Austin Engineering LLC**

4211 HWY 81 E, LANCASTER, WI 53813  
PHONE 608-723-6363 FAX 608-723-6702

JOB NUMBER 07S232  
FIELDBOOK: TDSR, 2708  
G:\T8NR2W\27  
H:\TIE\T8NR2W\123

DRAWN BY: SW AUSTIN  
APPROVED: LL AUSTIN

123