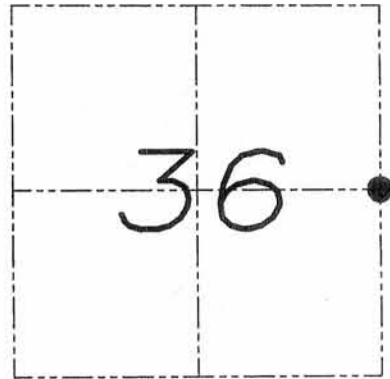


U.S. PUBLIC LAND SURVEY MONUMENT RECORD

Section 36, Town 8 North Range 2 West, Town of Watterstown, Grant County, Wisconsin

CERTIFICATE

I, Larry L. Austin, do hereby certify that the corner location on this record was determined by me and/or under my direct supervision and that this U.S. public land survey monument record is correct and complete to the best of my knowledge and belief.



● = CORNER LOCATION

Larry L. Austin
Larry L. Austin, S-1903



HISTORY OF CORNER

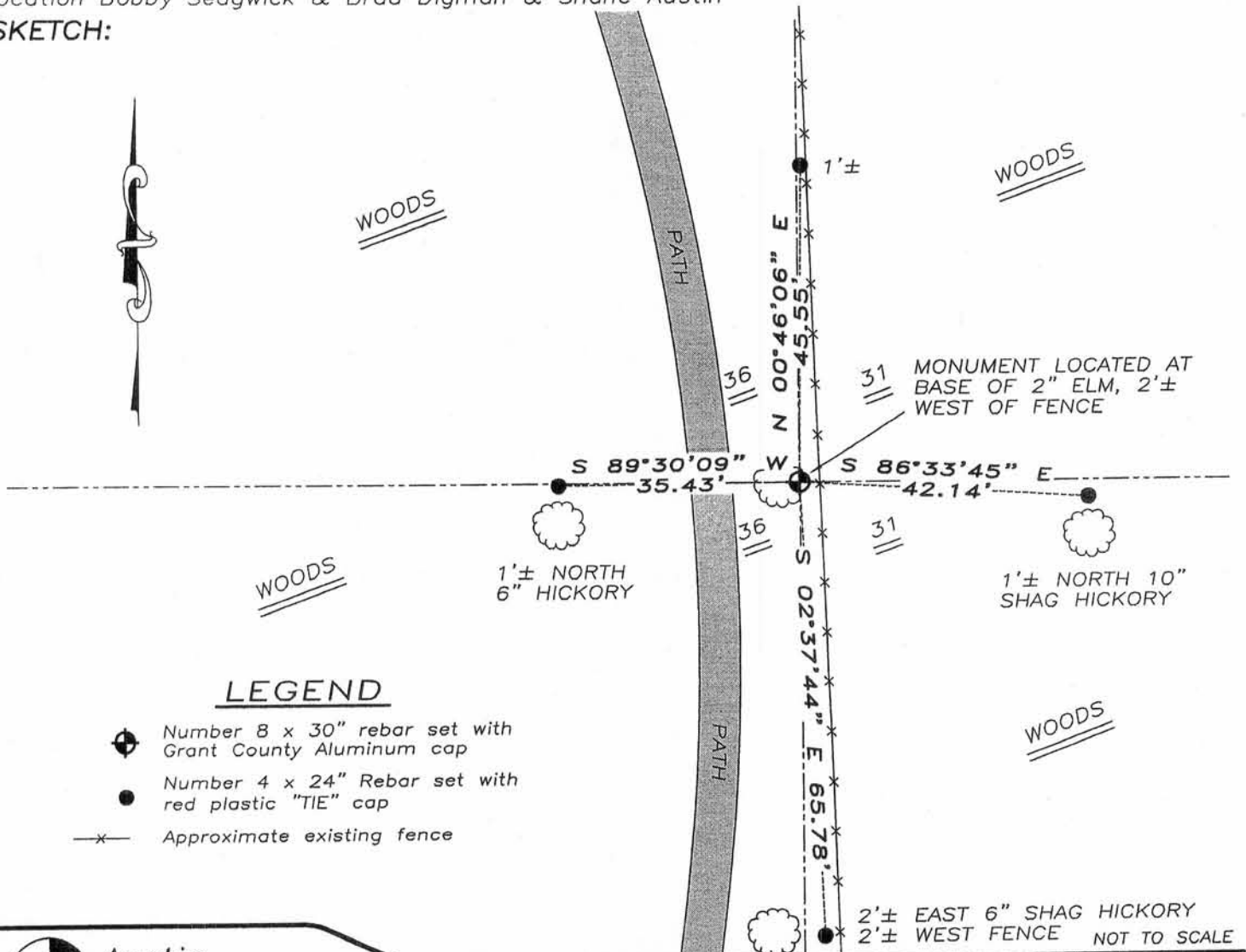
Corner was originally set by Lyon.
No other record of the corner was found.

CORNER EVIDENCE FOUND

I reset the corner midway and on-line between the Northeast and Southeast corners of Section 36. This location fit an existing North-South fence. Verified this location using EDM & GPS methods.

DESCRIPTION OF CORNER AND WITNESS MONUMENTS, references and accessories used to perpetuate the original or re-established location of this corner. Witnesses to monument location Bobby Sedgwick & Brad Digman & Shane Austin

SKETCH:



LEGEND

- ⊕ Number 8 x 30" rebar set with Grant County Aluminum cap
- Number 4 x 24" Rebar set with red plastic "TIE" cap
- x- Approximate existing fence



Austin
Engineering LLC

4211 HWY 81 E, LANCASTER, WI 53813
PHONE 608-723-6363 FAX 608-723-6702

JOB NUMBER 07S232
FIELDBOOK: TDSR, 2708
G:\T8NR2W\27
H:\TIE\T8NR2W\120

DRAWN BY: SW AUSTIN
APPROVED: LL AUSTIN