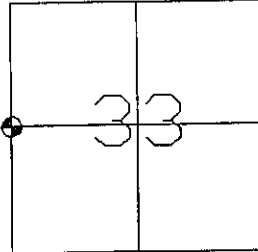



GRANT COUNTY CERTIFIED U.S. PUBLIC LAND SURVEY MONUMENT RECORD

SECTION 33 T 8 N, R 2 W



TYPE OF MONUMENT 3/4" x 24" Iron Rod
WITNESSES TO MONUMENT LOCATION

REGINALD T. JAQUISH
CHRISTOPHER RUETTEN

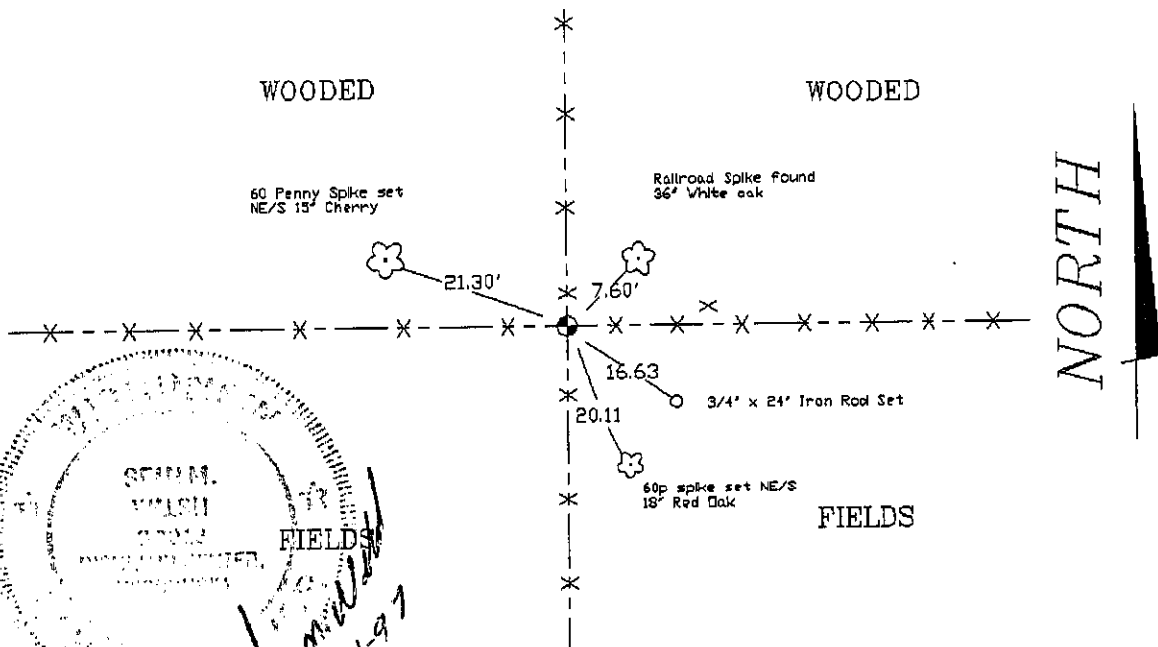
 CORNER LOCATION

BASIS FOR MONUMENT LOCATION

I could find no evidence of any previous survey, therefore this corner has been re-established at this location of physical occupation.

The information contained hereon is true and correct to the best of my knowledge and belief.

TIE SKETCH



SEAL OF GRANT COUNTY, MISSOURI
REGINALD T. JAQUISH
PUBLIC LAND SURVEY
8-11-97