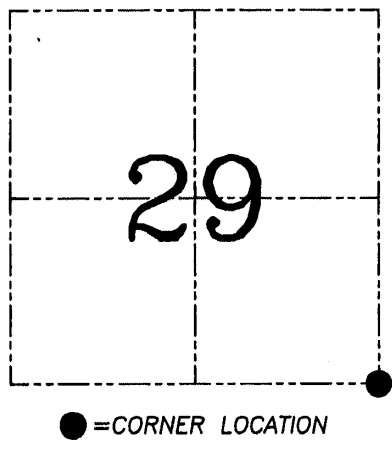
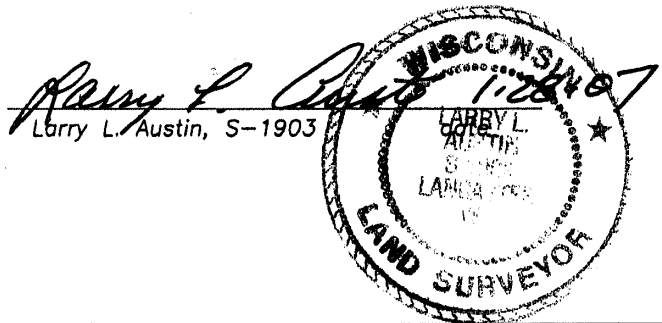


Section 29, Town 8 North Range 2 West, Town of Watterstown

CERTIFICATE

I, Larry L. Austin, do hereby certify that the corner location on this record was determined by me and/or under my direct supervision and that this U.S. public land survey monument record is correct and complete to the best of my knowledge and belief.



HISTORY OF CORNER ESTABLISHMENT

Corner was originally set in 1833 by Parke.  
No other record of the corner was found.

DESCRIPTION OF CORNER EVIDENCE FOUND

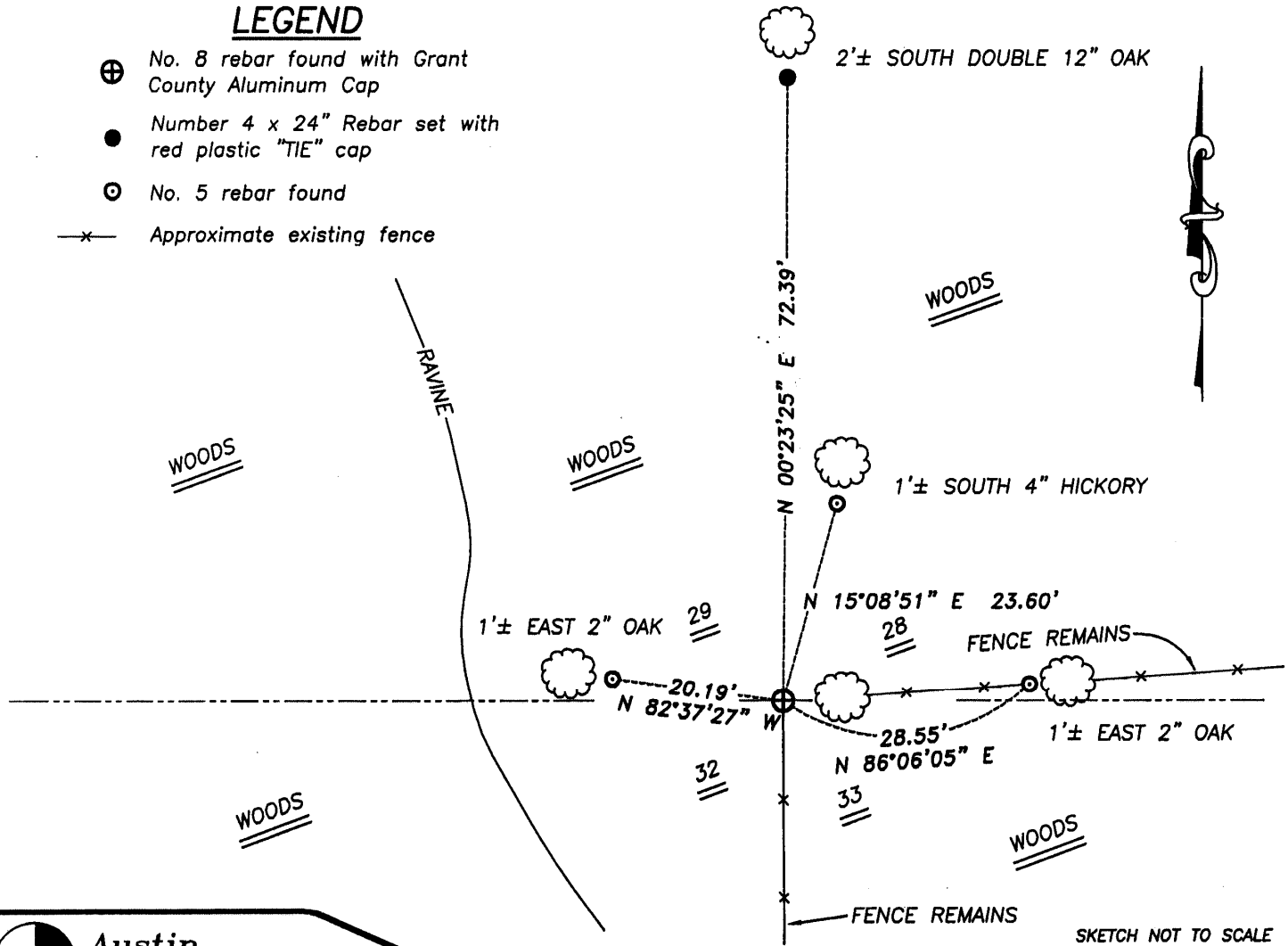
I found and accepted a No. 8 rebar with a Grant County Aluminum Cap.  
I considered the monument at the occupied location to be the best evidence after an EDM & GPS traverse of the area.

DESCRIPTION OF CORNER AND WITNESS MONUMENTS, references and accessories used to perpetuate the original or re-established location of this corner. Witnesses to corner location Bobby Sedgwick & Brad Digman & Shelby Blindert

SKETCH:

LEGEND

- ⊕ No. 8 rebar found with Grant County Aluminum Cap
- Number 4 x 24" Rebar set with red plastic "TIE" cap
- No. 5 rebar found
- x- Approximate existing fence



SKETCH NOT TO SCALE

**Austin Engineering LLC**  
 4211 HWY 81 E, LANCASTER, WI 53813  
 PHONE 608-723-6363 FAX 608-723-6702

JOB NUMBER 06S323  
 FIELDBOOK: TDSR, 2608  
 G:\T8NR2W\27  
 H:\TIE\T8NR2W\109

DRAWN BY: SW AUSTIN  
 APPROVED: LL AUSTIN