

Survey Monument Record

TYPE OF MONUMENT 3/4" X 24" IRON ROD

STATE PLANE COORDINATES: N \_\_\_\_\_  
E \_\_\_\_\_

ELEVATION — M.S.L. DATUM: \_\_\_\_\_

THETA ANGLE: \_\_\_\_\_

FIELD BOOK: \_\_\_\_\_

PAGE \_\_\_\_\_

CORNER NO. \_\_\_\_\_

SECTION 27

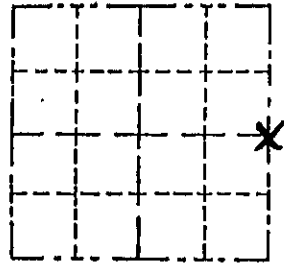
TOWN 8 NORTH

RANGE 2 WEST

BASIS FOR MONUMENT LOCATION

(Use reverse side if necessary)

Show info such as: History of corner, with reference to Vol. and pg., dates, surveyor; exact description of monument replaced; if location computed, by taped or EDM traverse; landowner, remarks, etc.

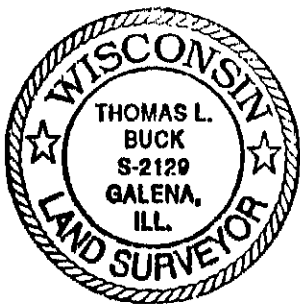


LOCATION

(Indicated by "X")

- FOUND PRESERVED LOCATION
- ORIGINATED EVIDENCE LOCATION
- LOST CORNER (RESTORED BY PROPORTIONATE METHODS)

THIS MONUMENT WAS SET BY USING EXISTING PHYSICAL EVIDENCE AND RETRACING A SURVEY DONE BY HOMER RALPH, RECORDED IN BOOK G, PAGE 120, GRANT CO. CLERKS OFFICE AFTER VERIFICATION BY PROPORTIONATE MEASUREMENTS FROM AN EDM TRAVERSE OF THE SECTION AND GPS OBSERVATIONS.



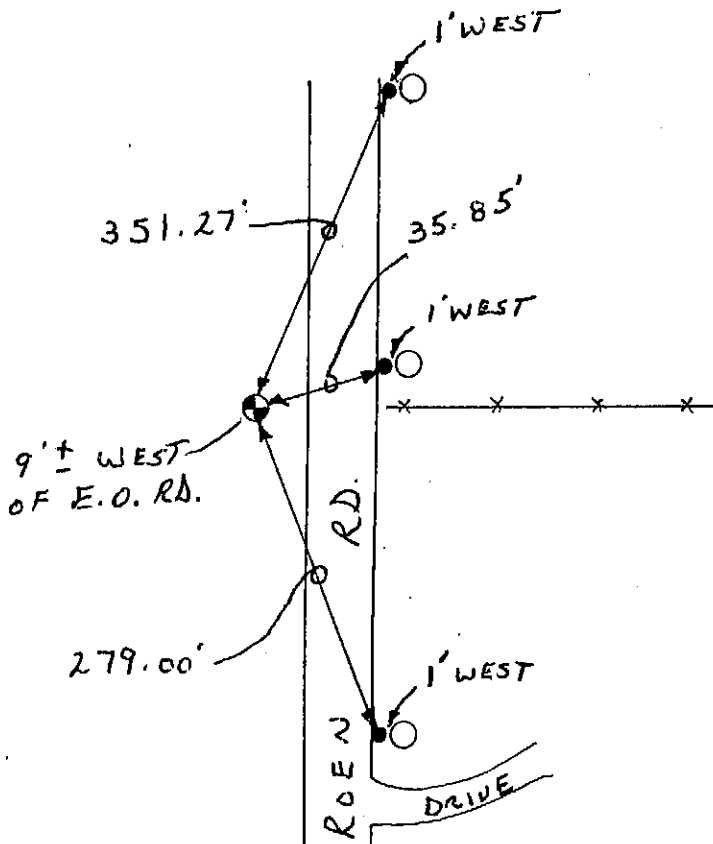
CERTIFIED CORRECT TO THE BEST OF MY KNOWLEDGE AND BELIEF

Thomas L. Buck  
Registered Land Surveyor

DATE: 10/13/98

TIE SKETCH

Show at least three (3) ties and monument



NO SCALE

LEGEND

⊙ = 3/4" X 24" IRON ROD

○ = POWER POLE

● = 1/2" IRON ROD

—x—x— = EXISTING FENCE