

U.S. PUBLIC LAND SURVEY MONUMENT RECORD - GRANT COUNTY, WI

Section 28, Town 8 North Range 2 West, Town of Watterstown (a)

NOTE: This form is intended and designed to fulfill all requirements of the Wisconsin Administrative Code Chapter A-E 7.08, U.S. Public Land Survey Monument Record (3) (a) (b) (c) (d) (e) (f) (g) (h) (i).

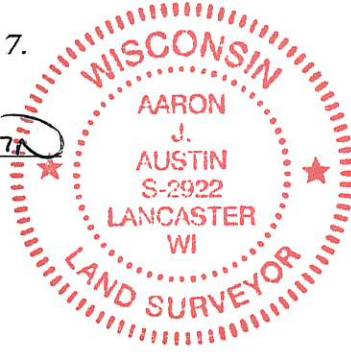
Corner No. 097

CERTIFICATE: (i)

I, Aaron J. Austin, Wisconsin Professional Land Surveyor, do hereby certify that the corner location on this record was determined by me and/or under my direct supervision and that this U.S. Public Land Survey Monument Record is correct and complete to the best of my knowledge and belief.

Dated this 3rd day of March, 2017.

Aaron J. Austin
 Aaron J. Austin, S-2922



● = CORNER LOCATION

Grant County Coordinates:
 NAD 83 (2011)
 Northing: 630502.99
 Easting: 846476.42

HISTORY OF CORNER ESTABLISHMENT:

Original corner was set in 1833 by Parke.
 Homer Ralph Jr. reset the corner on a Survey dated 2-13-1974 filed in Book F, Page 113.
 Thomas Buck found Ralph's corner and prepared a Survey Monument Record dated 10-13-1998.

DESCRIPTION OF CORNER EVIDENCE FOUND: (b) (f) (g) (h)

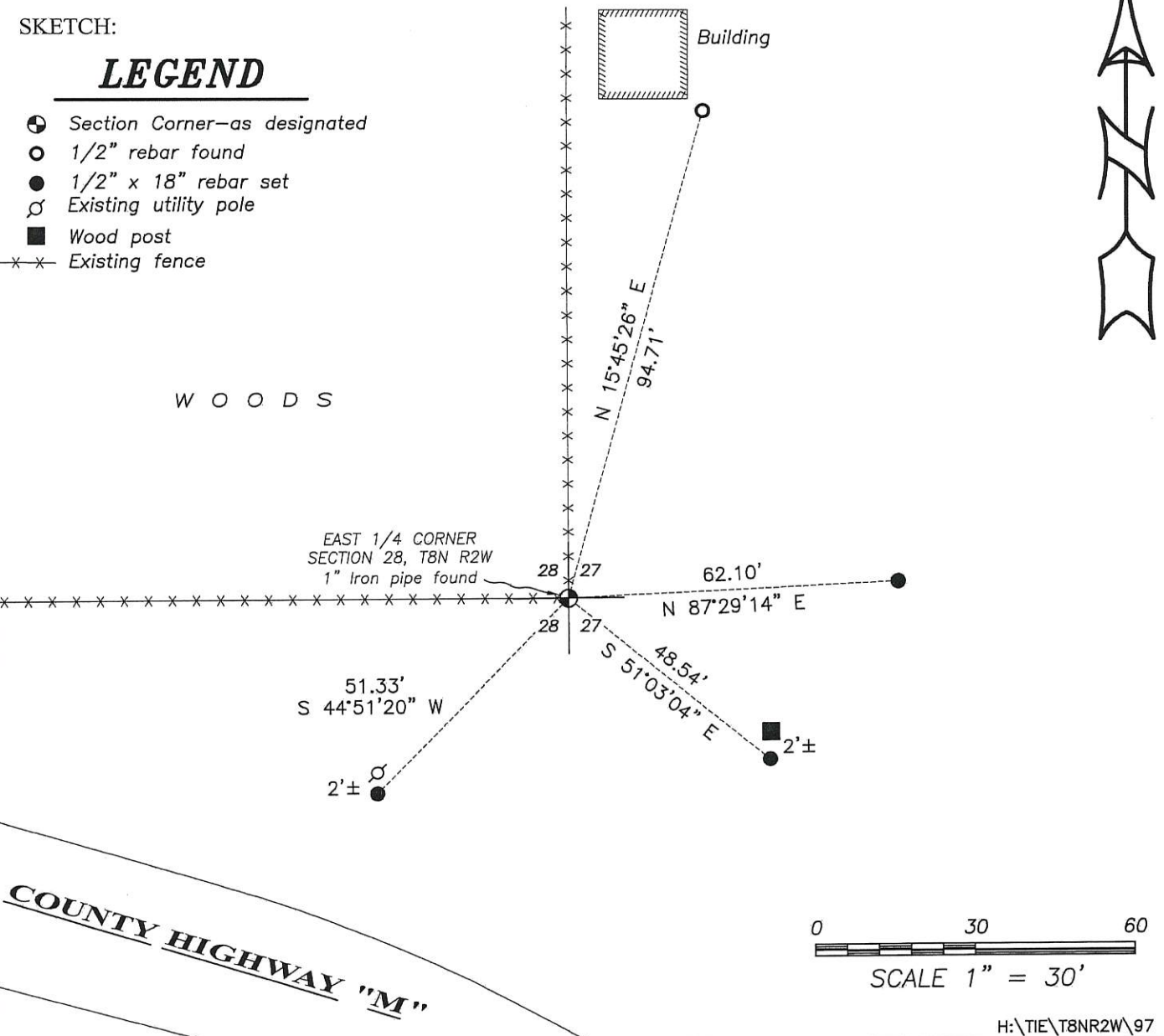
I found the 1" iron pipe and one witness corner as established by Thomas Buck. I set three additional witness corners after I verified it's location with G.P.S. and E.D.M. methods

DESCRIPTION OF CORNER AND WITNESS MONUMENTS, references and accessories used to perpetuate the original or re-established location of this corner. (c) (d) (e)
 Witnesses to corner location Shane Austin.

SKETCH:

LEGEND

- Section Corner—as designated
- 1/2" rebar found
- 1/2" x 18" rebar set
- ⊙ Existing utility pole
- Wood post
- ×× Existing fence



Survey Monument Record

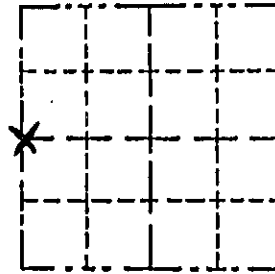
TYPE OF MONUMENT 1" X 24" IRON PIPE
 STATE PLANE COORDINATES: N _____
 E _____
 ELEVATION — M.S.L. DATUM: _____
 THETA ANGLE: _____
 FIELD BOOK: _____
 PAGE _____

CORNER NO. _____
 SECTION 27
 TOWN 8 NORTH
 RANGE 2 WEST

BASIS FOR MONUMENT LOCATION

(Use reverse side if necessary)

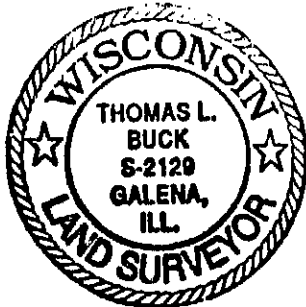
Show info such as: History of corner, with reference to Vol. and pg., dates, surveyor; exact description of monument replaced; if location computed, by taped or EDM traverse; landowner, remarks, etc.



LOCATION
 (Indicated by "X")

- FOUND PERPETUATED LOCATION
- OBLITERATED EVIDENCE LOCATION
- LOST CORNER (RESTORED BY PROPORTIONATE METHODS)

I FOUND AND EXCEPTED A 1" X 24" IRON PIPE SET BY HOMER RALPH, GRANT COUNTY SURVEYOR IN 1974 AFTER AN E.D.M. TRAVERSE OF SECTION 27 AND G.P.S OBSERVATION.



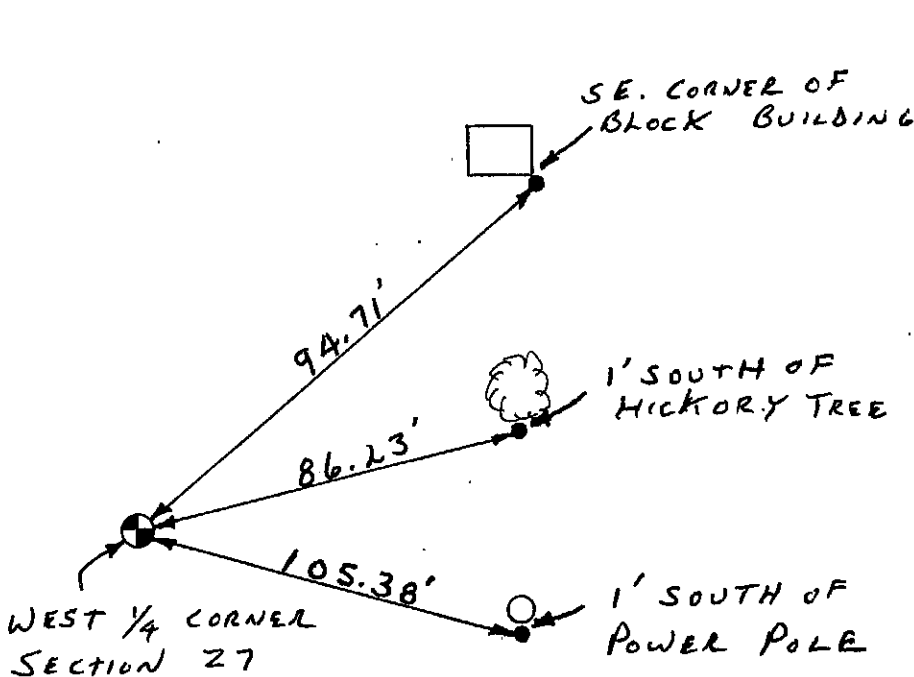
CERTIFIED CORRECT TO THE BEST OF MY KNOWLEDGE AND BELIEF

Thomas L. Buck
 Registered Land Surveyor

DATE: 10/13/98

TIE SKETCH

Show at least three (3) ties and monument



NO SCALE
 LEGEND

- ⊙ = 1" X 24" IRON PIPE
- = 1/2" IRON ROD