

GRANT COUNTY CERTIFIED LAND CORNER

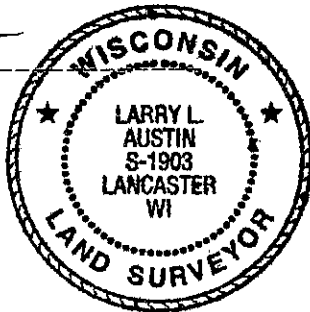
CORNER NUMBER 91

CERTIFICATE:

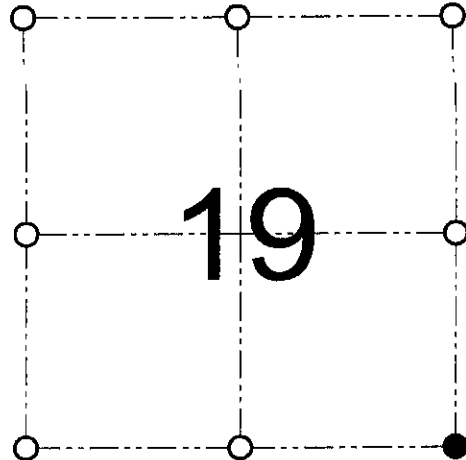
I, Larry L. Austin, do hereby certify that on the 24th day of August, 2000, I found evidence of the Southeast corner of Section 19, Town 8 North, Range 2 West, of the 4th Principal Meridian, and I re-established said corner according to the Wisconsin statutes as shown and described hereon.

Dated this 2nd day of February, 2001

Larry L. Austin
Larry L/Austin S-1903



SEAL



● = CORNER LOCATION

SOUTHEAST CORNER OF
SECTION 19, T 8 N R 2 W
TOWN OF WATTERSTOWN

HISTORY OF ORIGINAL CORNER ESTABLISHMENT:

Corner was originally set in 1833 by Harvey Parke. In 1992 Terry Cornell found an existing 1" Iron pipe. No other record of the corner was found.

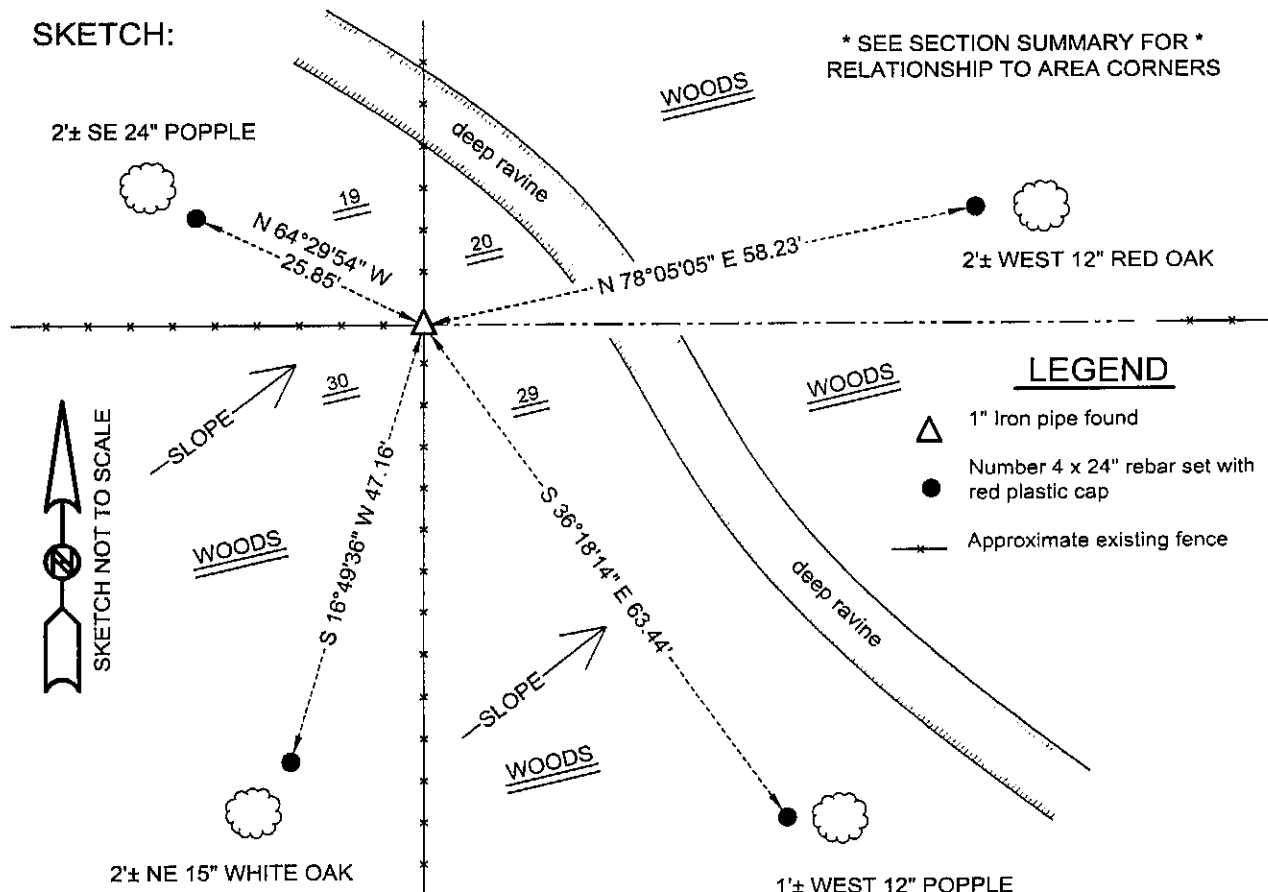
DESCRIPTION OF CORNER EVIDENCE FOUND:

I found the existing 1" Iron pipe and accepted it's location after an EDM & GPS traverse of the area.

DESCRIPTION OF CORNER AND WITNESS MONUMENTS, references and accessories used to perpetuate the original or re-established location of this corner

WITNESS TO THE CORNER LOCATION: SHELBY BLINDERT & BOBBY SEDGWICK

SKETCH:



LEGEND

- △ 1" Iron pipe found
- Number 4 x 24" rebar set with red plastic cap
- Approximate existing fence

AUSTIN ENGINEERING, LLC
4211 HWY 81 E, LANCASTER, WI 53813
PHONE 608-723-6363 FAX 608-723-6702

FIELDBOOK: SDR33, 2027
G:\T8NR2W\19
C:\SC14\SWA\TIE\T8NR2W\91

DRAWN BY: SW AUSTIN
APPROVED: LL AUSTIN
CREW: BS - SB - SA - TF