

U.S. PUBLIC LAND SURVEY MONUMENT RECORD – GRANT COUNTY, WI

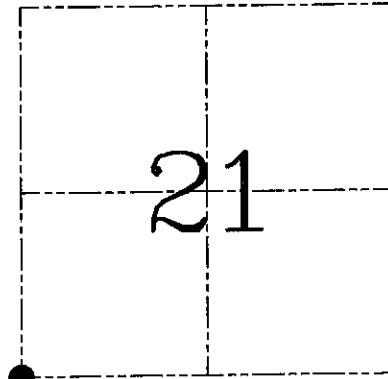
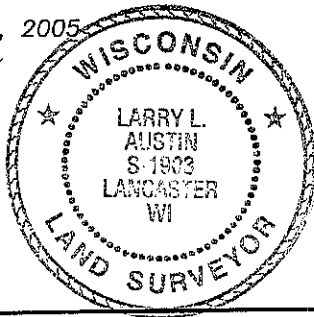
Section 21, Town 8 North Range 2 West, Town of Watterstown

CERTIFICATE

I, Larry L. Austin, do hereby certify that the corner location on this record was determined by me and/or under my direct supervision and that this U.S. public land survey monument record is correct and complete to the best of my knowledge and belief.

Dated this 25th day of November, 2005

Larry L. Austin
 Larry L. Austin S-1903



HISTORY OF CORNER ESTABLISHMENT

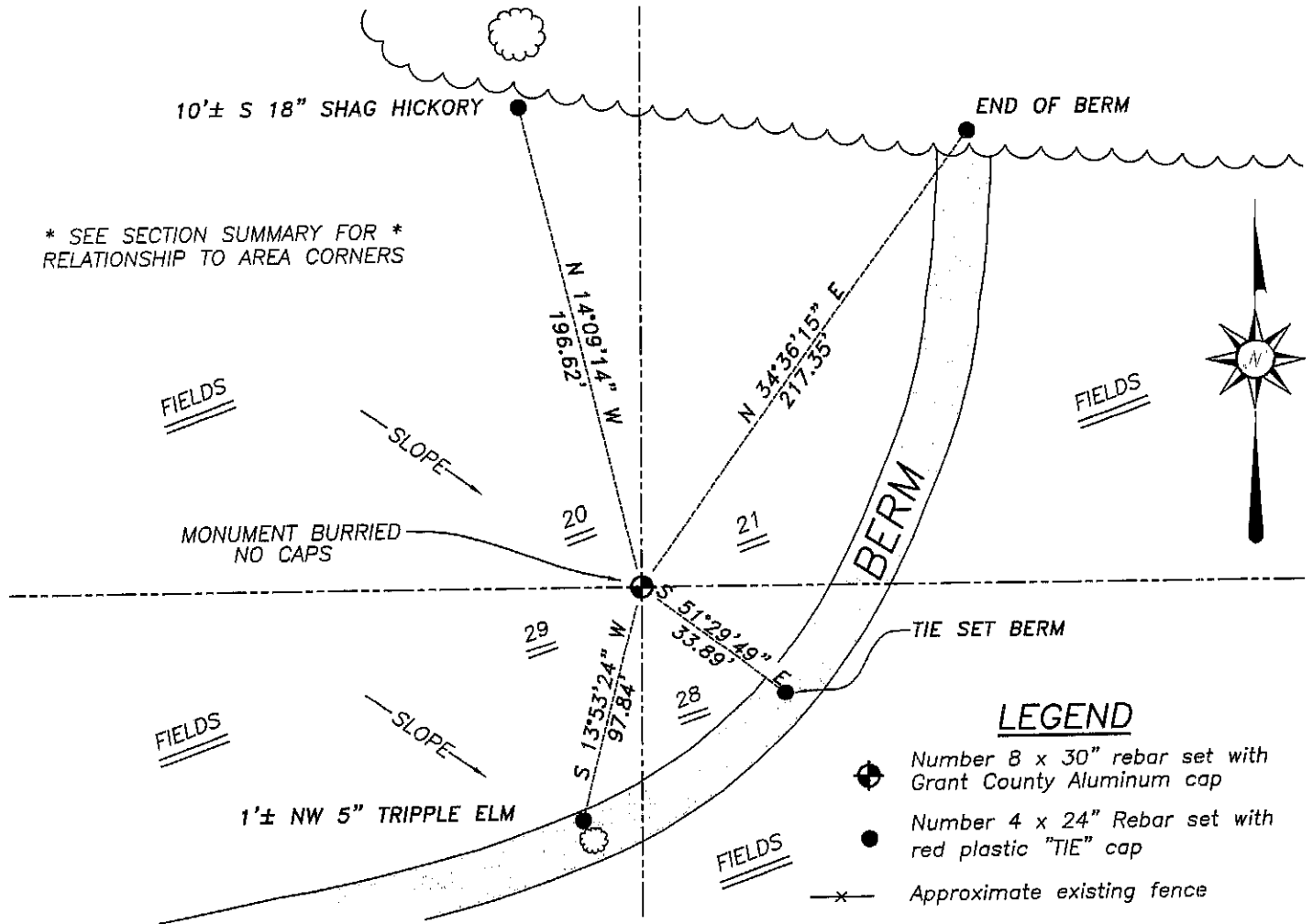
Corner was originally set in 1832 by Parke.
 No other record of the corner was found.

DESCRIPTION OF CORNER EVIDENCE FOUND

I reset the corner proportionately between the Northwest corner of 21 and the West 1/4 of Section 28. This location fit the occupied fence East and West of the corner. Verified this location using EDM & GPS methods.

DESCRIPTION OF CORNER AND WITNESS MONUMENTS, references and accessories used to perpetuate the original or re-established location of this corner. Witnesses to corner location Brad Digman & Shane Austin.

SKETCH:



LEGEND

- Number 8 x 30" rebar set with Grant County Aluminum cap
- Number 4 x 24" Rebar set with red plastic "TIE" cap
- x- Approximate existing fence

SKETCH NOT TO SCALE



Austin Engineering LLC

4211 HWY 81 E, LANCASTER, WI 53813
 PHONE 608-723-6363 FAX 608-723-6702

JOB NUMBER 04S149
 FIELDBOOK: 2505
 G:\T8NR2W\27
 H:\TIE\T8NR2W\89

DRAWN BY: ML DIGMAN
 APPROVED: LL AUSTIN