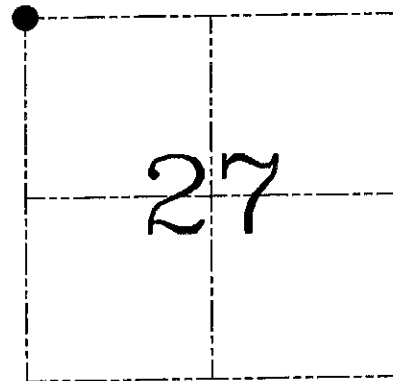
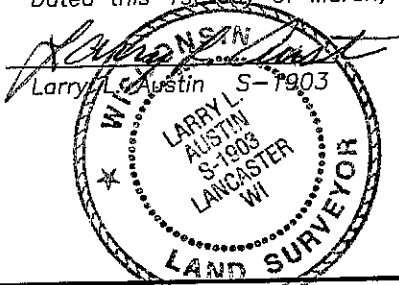


U.S. PUBLIC LAND SURVEY MONUMENT RECORD – GRANT COUNTY, WI
Section 27, Town 8 North Range 2 West, Town of Watterstown

CERTIFICATE

I, Larry L. Austin, do hereby certify that the corner location on this record was determined by me and/or under my direct supervision and that this U.S. public land survey monument record is correct and complete to the best of my knowledge and belief.

Dated this 1st day of March, 2004



HISTORY OF CORNER ESTABLISHMENT

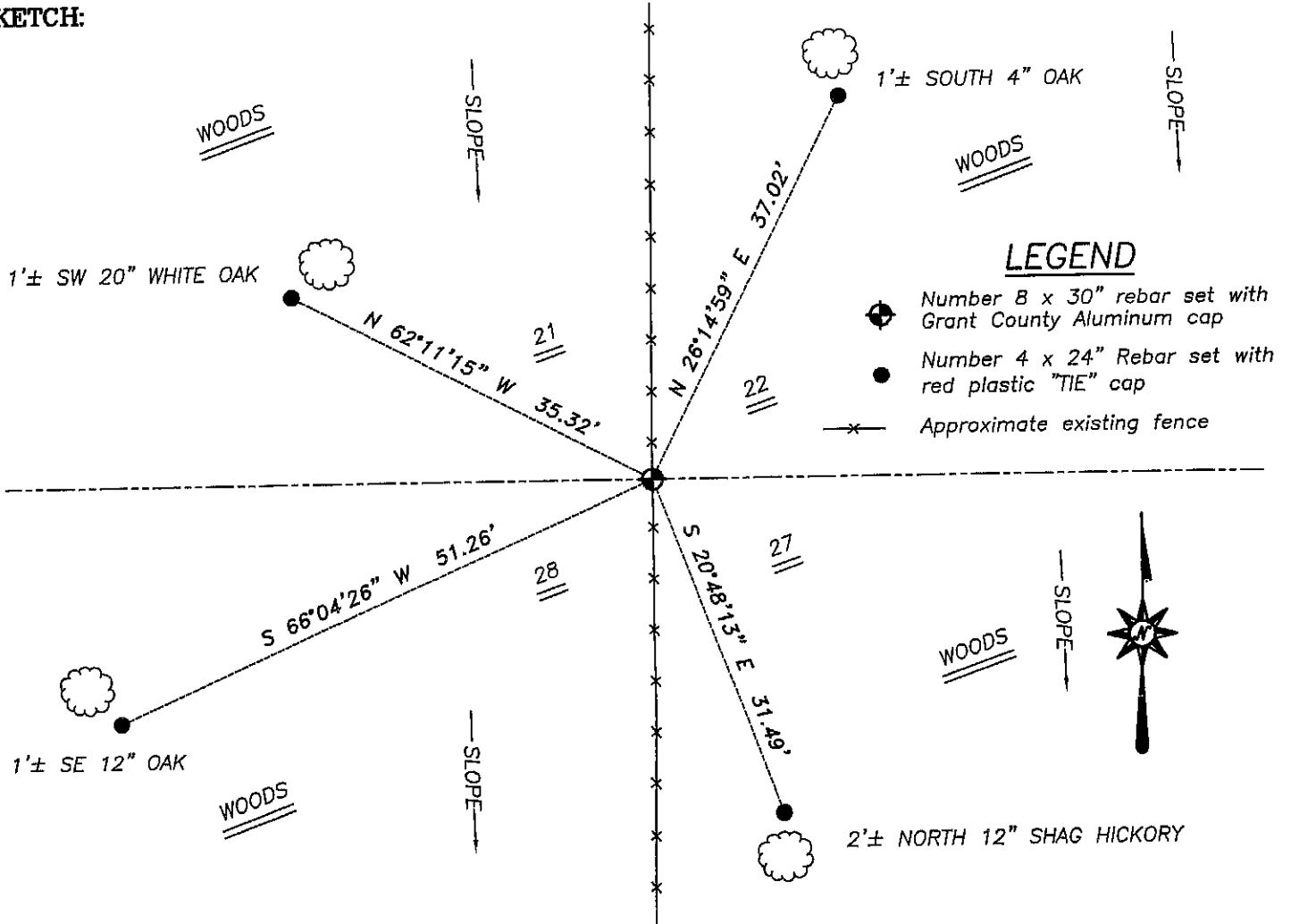
Corner was originally set in 1832 by Harvey Parke. In 1910 A.W. Appleby found the original government trees. No other record of the corner was found.

DESCRIPTION OF CORNER EVIDENCE FOUND

I was unable to locate the original bearing trees. I found a North-South fence and accepted it's location for Easting. Northing was established based on doubling up the occupied and monumented West line of the Southwest 1/4 of the Northwest 1/4. I verified this location using EDM & GPS methods.

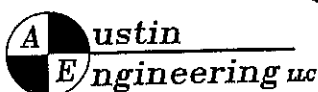
DESCRIPTION OF CORNER AND WITNESS MONUMENTS, references and accessories used to perpetuate the original or re-established location of this corner. Witnesses to corner location Bobby Sedgwick & Shane Austin & Brad Digman

SKETCH:



* SEE SECTION SUMMARY FOR *
 RELATIONSHIP TO AREA CORNERS

SKETCH NOT TO SCALE



4211 HWY 81 E, LANCASTER, WI 53813
 PHONE 608-723-6363 FAX 608-723-6702

JOB NUMBER 03S305
 FIELDBOOK: TSDR, 2314
 G:\T8NR2W\27
 H:\TIE\T8NR2W\87

DRAWN BY: SW AUSTIN
 APPROVED: LL AUSTIN