

1994
SEP 22 1994

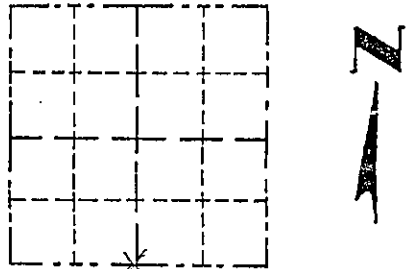
Survey Monument Record

Grant. Co.
 TYPE OF MONUMENT Driveable Aluminum
 STATE PLANE COORDINATES: N _____
 E _____
 ELEVATION — M.S.L. DATUM: _____
 THETA ANGLE: _____
 FIELD BOOK: 92-5
 PAGE 27

CORNER NO. _____
 SECTION 23
 TOWN 8N
 RANGE 2W

BASIS FOR MONUMENT LOCATION

(Use reverse side if necessary)
 Show info such as: History of corner, with reference to Vol. and pg., dates, surveyor; exact description of monument replaced; if location computed, by taped or EDM traverse; landowner, remarks, etc.



LOCATION
 (Indicated by "X")

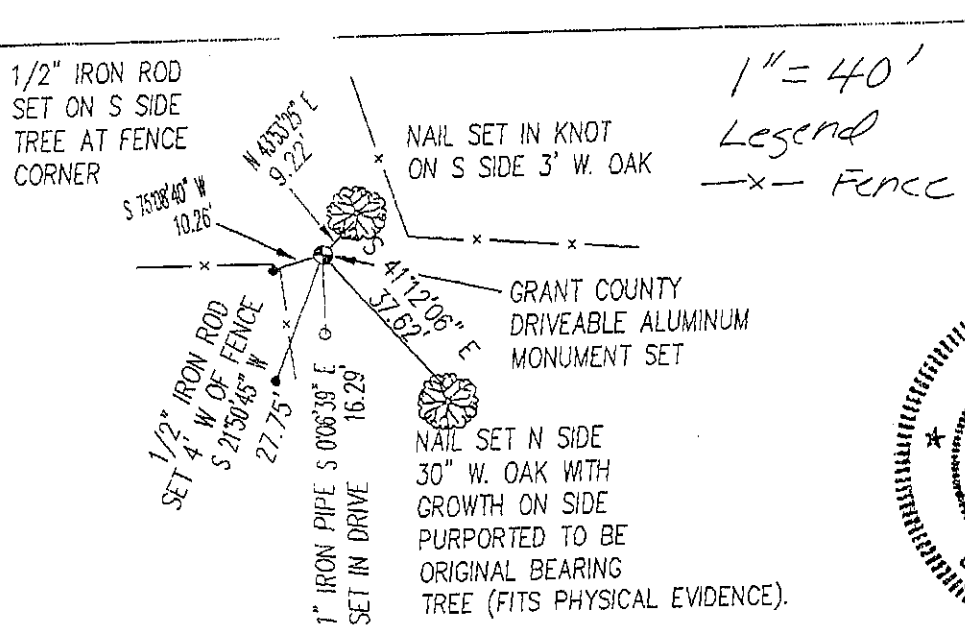
SEAL:

Monument was placed at the record call from a 30" + Oak, believed to be one of the original trees as called for in the govt. notes. It fit the physical evidence of fences North, Southwest and East as well as the (2) 40 corners to the east extremely well. Note: the tree has a bizzarre growth on it believed to have been caused by the blaze mark.

CERTIFIED CORRECT
Laurence E. Schmit
 Registered Land Surveyor
 DATE: 10/23/92

TIE SKETCH

Show at least three (4) ties and monument



1" = 40'
 Legend
 —x— Fence

