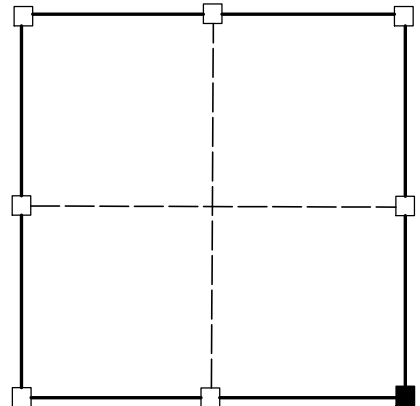
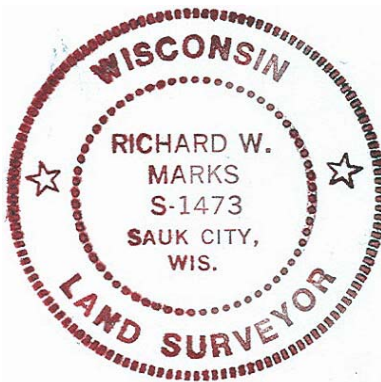


U.S. PUBLIC LAND SURVEY MONUMENT RECORD

(a) Corner Location
 Township 8 North
 Range 2 West
 Town of watterstown
 Grant County

I, Richard Marks, Professional Land Surveyor S-1473 certify that the corner location on this record was determined by me and that this U.S. public land survey monument record is correct and complete to the best of my knowledge and belief.
 Dated this 1st day of July, 2014



■ = corner location

Section 23



Richard Marks, P.L.S. number S-1473

History of corner establishment:

Original survey by Harvey Parke on February 21, 1833. Charles Sampson was at this corner on April 23, 1892. Grant County Highway plan dated August 10, 2006 shows a 1 1/2" iron pipe found at this corner.

Description of corner evidence found:

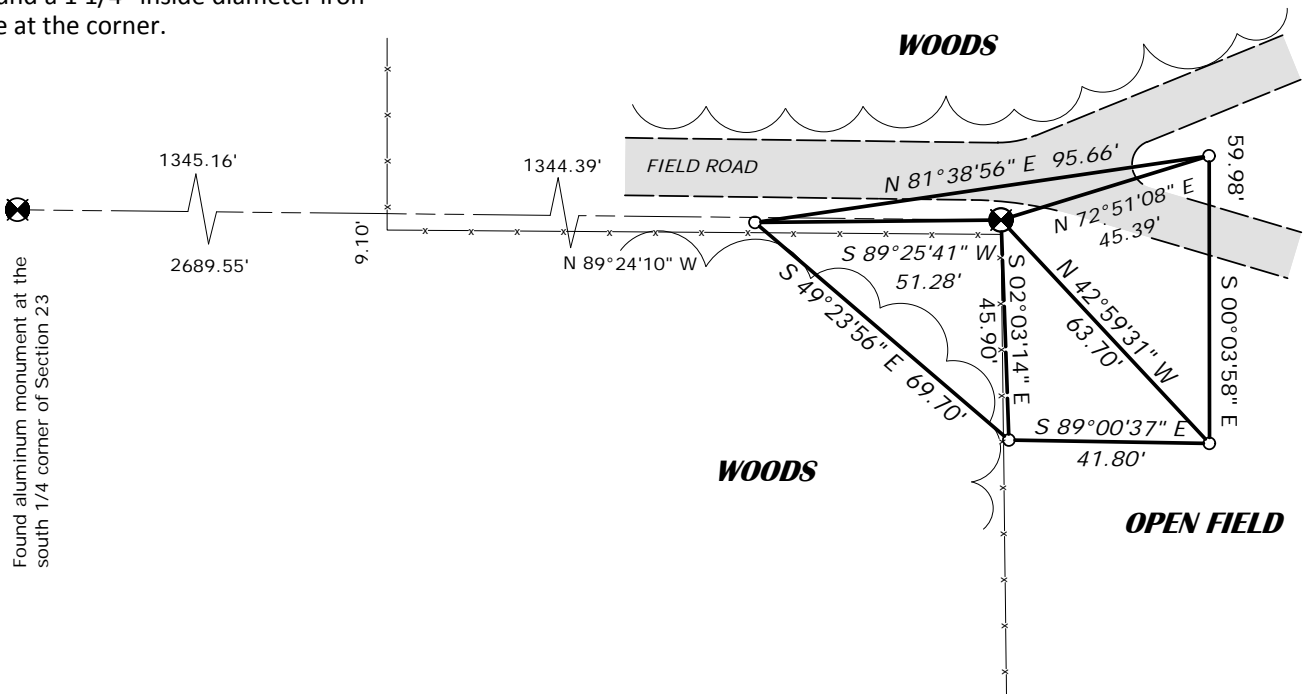
I found a 1 1/4" inside diameter (1 1/2" outside diameter) iron pipe at the corner. Location fits a fence corner at the southwest corner of the SE1/4 of the SE1/4 of Section 23 and matches Sampson's record distance along the south line of the SE1/4 within a few feet. I measure 2689.56'. Sampson measured 2688.84'.

Description of corner and witness monuments, references and accessories used to perpetuate the original or re-established location of this corner.

Bearings are grid based on the Grant County coordinate system designed by the Wisconsin Department of Transportation. NAD83 (2011)

Witness corners are 3/4" x 24" solid round iron rods set.

I found a 1 1/4" inside diameter iron pipe at the corner.



Control: COMBINATION OF GPS AND CONVENTIONAL FIELD CONTROL

Datum: NAD 83 (2011)		County coordinates		State plane coordinates	
Lat.		North	633006.72'	North	
Long.		East	857150.00'	East	
					Page _____