

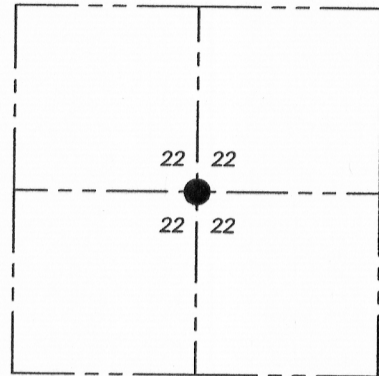
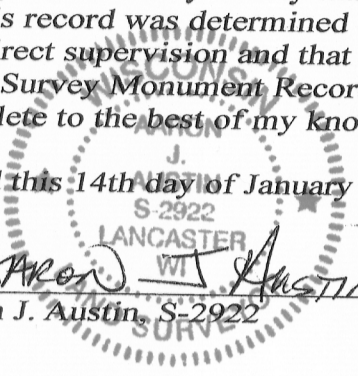
U.S. PUBLIC LAND SURVEY MONUMENT RECORD - GRANT COUNTY, WI
 Section 22, Town 8 North Range 2 West, Town of Watterstown

CERTIFICATE:

I, Aaron J. Austin, Wisconsin Professional Land Surveyor, do hereby certify that the corner location on this record was determined by me and/or under my direct supervision and that this U.S. Public Land Survey Monument Record is correct and complete to the best of my knowledge and belief.

Dated this 14th day of January 2016.

Aaron J. Austin
 Aaron J. Austin, S-2922



● = CORNER LOCATION

HISTORY OF CORNER ESTABLISHMENT:

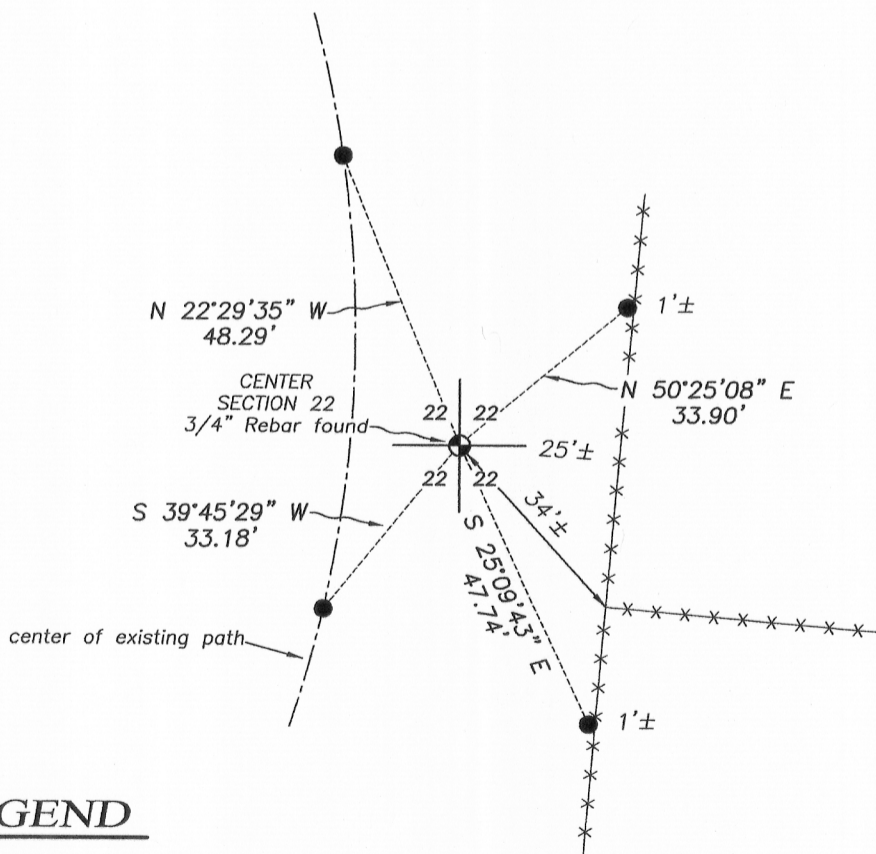
Corner was not set with original government survey.
 2005-Larry Austin set the corner on a Survey filed in Book 17, Page 9.

DESCRIPTION OF CORNER EVIDENCE FOUND:

Larry Austin set the corner at an intersection with the North-South and East-West quarter lines on a Survey filed in Book 17, Page 9. I found the monument in place and set 4 witness corners as shown hereon, after I verified it's location with E.D.M. and G.P.S. methods.

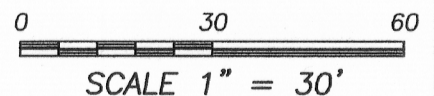
DESCRIPTION OF CORNER AND WITNESS MONUMENTS, references and accessories used to perpetuate the original or re-established location of this corner. Witnesses to corner location Shane Austin.

SKETCH:



LEGEND

- Section Corner—as designated
- 1/2" x 12" Rebar set
- x-x- Approximate existing fence



4211 HWY 81 E, LANCASTER, WI 53813
 PHONE: 608-723-6363 FAX: 608-723-6702

JOB NO: 15s219
 H:CRD\15s219
 H:\TIE\T8NR2W\77.5

FIELDBOOK: TDSR
 DRAWN BY: AJ AUSTIN
 CREW: SW AUSTIN

77.5

JAN 20 2016