

GRANT COUNTY U.S. PUBLIC LAND SURVEY MONUMENT RECORD

INSTRUCTIONS: THIS RECORD SHALL SHOW THE LOCATION OF THE CORNER AND SHALL INCLUDE ALL OF THE FOLLOWING ELEMENTS (A THROUGH I).

(A) IDENTIFY THE CORNER AS REFERENCED TO THE U.S. PUBLIC LAND SURVEY SYSTEM

■ = CORNER MONUMENT RESTORED

WITNESSES TO CORNER LOCATION:

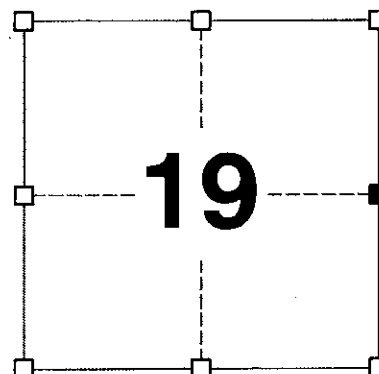
JAY P. ADAMS
JEREMY F. KRACHEY

GEOGRAPHIC COORDINATES,
NAD 83 (2011) ADJUSTMENT:

LATITUDE: 43° 09' 19.5883"
LONGITUDE: 90° 38' 48.6791"

WISCONSIN COORDINATE REFERENCE SYSTEM (WISCRS),
GRANT COUNTY, NAD 83 (2011) ADJUSTMENT:

NORTHING: 635,747.59
EASTING: 835,867.63



SECTION 19
TOWNSHIP 8 NORTH, RANGE 2 WEST
TOWN OF WATTERSTOWN

(B) DESCRIBE ANY RECORD EVIDENCE, MONUMENT EVIDENCE, OCCUPATIONAL EVIDENCE, TESTIMONIAL EVIDENCE OR ANY OTHER MATERIAL EVIDENCE YOU CONSIDERED, AND WHETHER THE MONUMENT WAS FOUND OR PLACED.

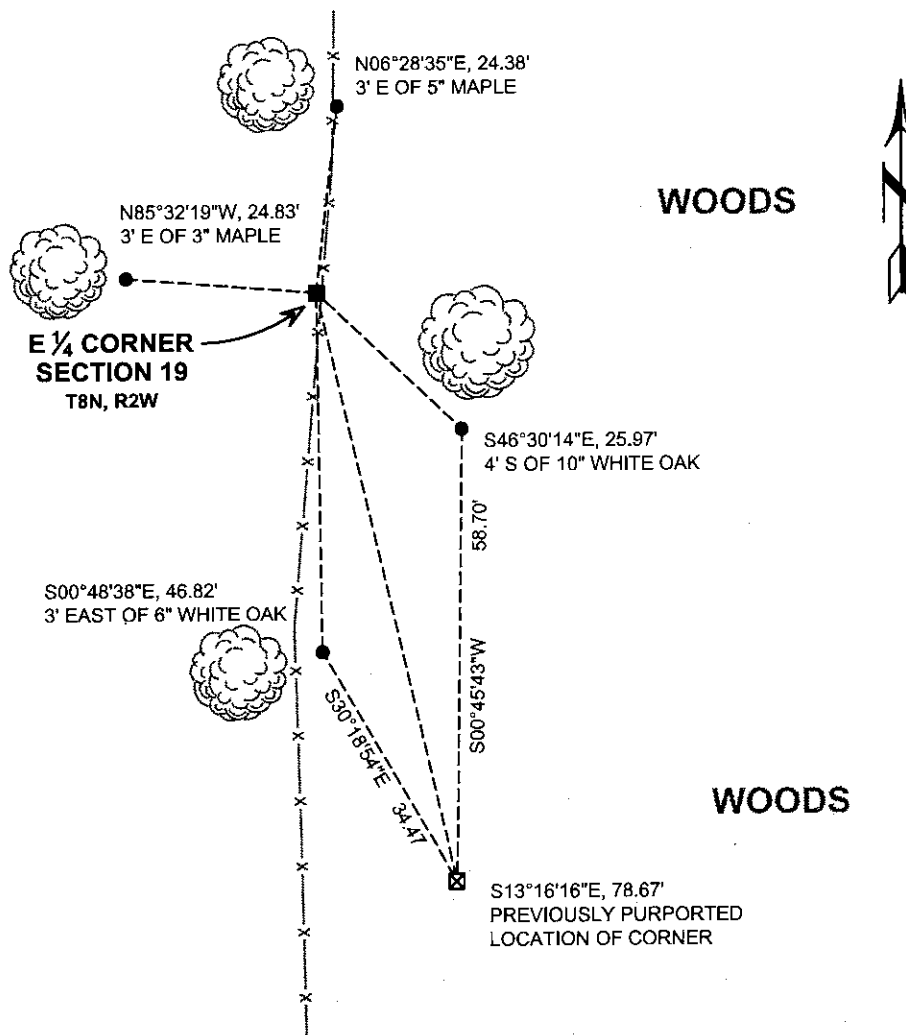
I COULD FIND NO MONUMENT OR BEARING TREES FROM THE ORIGINAL GOVERNMENT SURVEY. I RECOVERED THE #8 REBAR AND GRANT COUNTY ALUMINUM CAP SET BY LARRY L. AUSTIN AT A SINGLE PROPORTIONATE LOCATION BETWEEN THE NORTHEAST AND SOUTHEAST CORNERS OF THE SECTION. THIS MONUMENT IS LOCATED 20 +/- EAST OF A NORTH-SOUTH FENCELINE AND 75' +/- SOUTH OF A PROJECTED FENCELINE RUNNING ALONG WHAT I BELIEVE TO BE EVIDENCE OF THE CORRECT LOCATION OF THE EAST-WEST QUARTER SECTION LINE. AFTER CAREFUL CONSIDERATION OF OCCUPATIONAL FIELD EVIDENCE, HOVELSRUD'S 1973 OCCUPATIONAL LOCATION OF THE CORNER, RECOVERED SURVEY MONUMENTATION AND HISTORIC AERIAL IMAGERY, I REMONUMENTED THIS CORNER IN THE NORTH-SOUTH FENCE AT THE PROJECTED LOCATION OF THE EAST-WEST FENCELINE RUNNING NEARLY THE ENTIRE DISTANCE THROUGH SECTION 19 FROM THE WEST QUARTER CORNER.

(C) IN THE PLAN VIEW DRAWING BELOW, PROVIDE REFERENCE TIES TO AT LEAST 4 WITNESS MONUMENTS. WITNESS MONUMENTS SHALL BE MADE OF CONCRETE, NATURAL STONE, IRON, BEARING TREES OR ANY OTHER EQUALLY DURABLE MATERIAL. DEPICT THE RELEVANT MONUMENTS AND REFERENCE TIES WITH SUFFICIENT DETAIL TO ENABLE ACCURATE RELOCATION OF THE CORNER IF THE CORNER MONUMENT IS DISTURBED.

(D)

LEGEND:

- SET 3/4" x 24" IRON ROD w/ GRANT CO. ALUM. CAP
- ⊠ FOUND #8 REBAR w/ GRANT CO. ALUM. CAP
- 3/4" x 24" IRON ROD SET AS ACCESSORY



(E) DESCRIBE ANY MATERIAL DISCREPANCY BETWEEN THE LOCATION OF THE CORNER AS RESTORED OR REESTABLISHED AND THE LOCATION OF THAT CORNER AS PREVIOUSLY RESTORED OR REESTABLISHED BY DISTANCE AND DIRECTION. SHOW THE DISCREPANCY ON THE PLAN VIEW DRAWING UNDER (D), ABOVE. SHOW THE DISTANCES BETWEEN THE CORNER AS PREVIOUSLY RESTORED OR REESTABLISHED AND (1) THE CORNER AS RESTORED OR REESTABLISHED, AND (2) TO AT LEAST 2 OF THE WITNESS MONUMENTS SHOWN ON THE DRAWING IN (D) ABOVE.

CORNER MOST PREVIOUSLY REPORTED TO BE A #8 REBAR WITH A GRANT COUNTY ALUMINUM CAP. I RECOVERED SAID MONUMENT AND REESTABLISHED THE CORNER AS DEPICTED IN (D).

(F) WAS THE CORNER RESTORED THROUGH ACCEPTANCE OF (1) AN OBLITERATED EVIDENCE LOCATION, OR (2) A FOUND PERPETUATED LOCATION?

(1) AN OBLITERATED EVIDENCE LOCATION

(G&H) WAS THE CORNER REESTABLISHED THROUGH LOST CORNER PROPORTIONATE METHODS? IF SO, SHOW THE METHOD, INCLUDING THE DIRECTIONS AND DISTANCES TO OTHER PUBLIC LAND SURVEY CORNERS USED AS EVIDENCE OR USED FOR PROPORTIONING IN DETERMINING THE CORNER LOCATION.

N/A

CORNER HISTORY

ORIGINAL GOVERNMENT CORNER ESTABLISHED BY HARVEY PARKE IN THE FIRST QUARTER OF 1833.

IN A PLAT OF SURVEY BY HERMAN HOVELSRUD DATED 9 JULY 1973, THE EAST LINE OF THE NORTHEAST QUARTER OF SECTION 19 IS SURVEYED WITH A FENCE CORNER NOTED AT THE EAST QUARTER CORNER WITH NO MENTION OF MONUMENT SET OR FOUND.

IN A PLAT OF SURVEY BY DAVID KROHN DATED DECEMBER 1976, THE 1/16TH CORNER WEST OF THIS CORNER IS SET WITHOUT ANY TIE TO ANY SECTION CORNERS IN THE SECTION. THE SURVEY APPEARS TO SHOW BEARING BREAKS IN THE EAST-WEST QUARTER SECTION LINE.

IN A PLAT OF SURVEY BY TERRY L. CORNELL DATED 4 MARCH 1991, CORNELL REPORTS FINDING A 60d SPIKE AND WASHERS FOUND AT A LOCATION PURPORTED TO BE THE NE CORNER OF THE SE/NE LOCATED 1316.69 FEET SOUTH OF THE NE CORNER OF SECTION 19.

IN A PLAT OF SURVEY DATED 25 MARCH 1992, CORNELL SETS A 1" IRON PIPE AT THE NE CORNER OF THE SE/SE BASED ON A SINGLE PROPORTIONATE DISTANCE BETWEEN THE NORTHEAST AND SOUTHEAST CORNERS OF THE SECTION. HIS ALIQUOT 'FORTY' DISTANCE ALONG THIS LINE IS 1319.49 FEET CREATING A DISCREPANCY WITH HIS 1991 SURVEY DISTANCE OF 1316.69 FEET.

IN A PLAT OF SURVEY DATED 31 MARCH 1992, CORNELL SET A 1" IRON PIPE AT THE EAST QUARTER CORNER OF THE SECTION AT A SINGLE PROPORTIONATE LOCATION BUT THIS TIME APPEARS TO DEPICT A HEAVY BEARING ON THE EAST-WEST QUARTER SECTION LINE OF SECTION 19 LEADING TO A 1" IRON PIPE LOCATED AT WHAT HE APPEARS TO REPORT AS BEING THE NW CORNER OF THE NE/SE.

IN A PLAT OF SURVEY BY TERRY L. CORNELL DATED 14 JULY 1995, CORNELL REPORTS FINDING A SPIKE AND WASHERS AT A LOCATION PURPORTED TO BE THE NE CORNER OF THE SE/NE LOCATED 1316.69 FEET SOUTH OF THE NE CORNER OF SECTION 19.

IN A PLAT OF SURVEY DATED 21 MAY 1998, CORNELL LOCATES A 1" IRON PIPE AT THIS CORNER AS WELL AS MORE MONUMENTS ALONG WHAT APPEARS TO BE THE EAST-WEST QUARTER SECTION LINE WITH NEARLY A 2 DEGREE BEARING BREAK ALONG SAID QUARTER LINE.

IN A PLAT OF SURVEY DATED 6 AUGUST 1999, CORNELL REPORTS A 2" IRON PIPE AT THIS CORNER.

IN A TIE SHEET BY LARRY L. AUSTIN DATED 2 FEBRUARY 2000, NO MONUMENT IS RECOVERED AND A #8 REBAR WITH GRANT COUNTY ALUMINUM CAP IS SET AT A LOCATION "ACCORDING TO CORNELL'S VARIOUS PLATS."

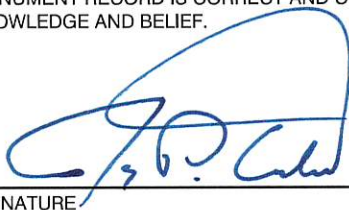
MANY VARIOUS PLATS OF SURVEYS AS WELL AS CERTIFIED SURVEY MAPS PERFORMED BY LARRY L. AUSTIN AND AARON J. AUSTIN REPORT RECOVERING THE MONUMENT REPORTED IN THE 2000 TIE SHEET FOR THE CORNER.

AFFIX LAND SURVEYOR SEAL

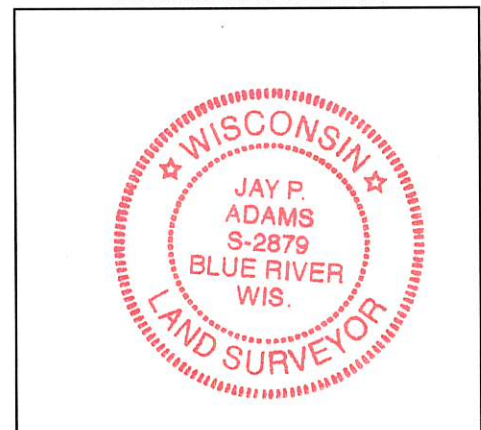
(I) I, JAY P. ADAMS, P.L.S. - 2879, CERTIFY THAT THE CORNER LOCATION SHOWN ON THIS RECORD WAS DETERMINED BY ME OR UNDER MY DIRECTION AND CONTROL AND THAT THIS U.S. PUBLIC LAND SURVEY MONUMENT RECORD IS CORRECT AND COMPLETE TO THE BEST OF MY KNOWLEDGE AND BELIEF.

SIGNATURE

DATE



5 DECEMBER 2016



CRAIG :
3 PAGES FAXED

GRANT COUNTY CERTIFIED LAND CORNER

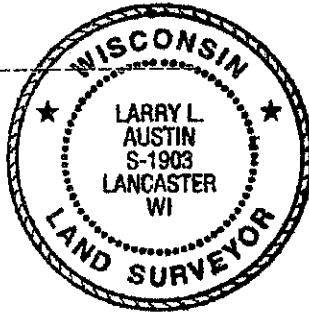
CORNER NUMBER 75

CERTIFICATE:

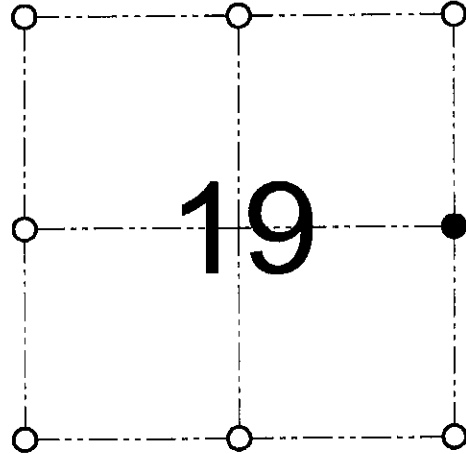
I, Larry L. Austin, do hereby certify that on the 24th day of August, 2000, I found no evidence of the East 1/4 corner of Section 19, Town 8 North, Range 2 West, of the 4th Principal Meridian, and I re-established said corner according to the Wisconsin statutes as shown and described hereon.

Dated this 2nd day of February, 2001

Larry L. Austin
Larry L. Austin S-1903



SEAL



● = CORNER LOCATION

EAST 1/4 CORNER OF
SECTION 19, T 8 N R 2 W
TOWN OF WATTERSTOWN

HISTORY OF ORIGINAL CORNER ESTABLISHMENT:

Corner was originally set in 1833 by Harvey Parke. In 1992 Terry Cornell found an existing Iron pipe. No other record of the corner was found.

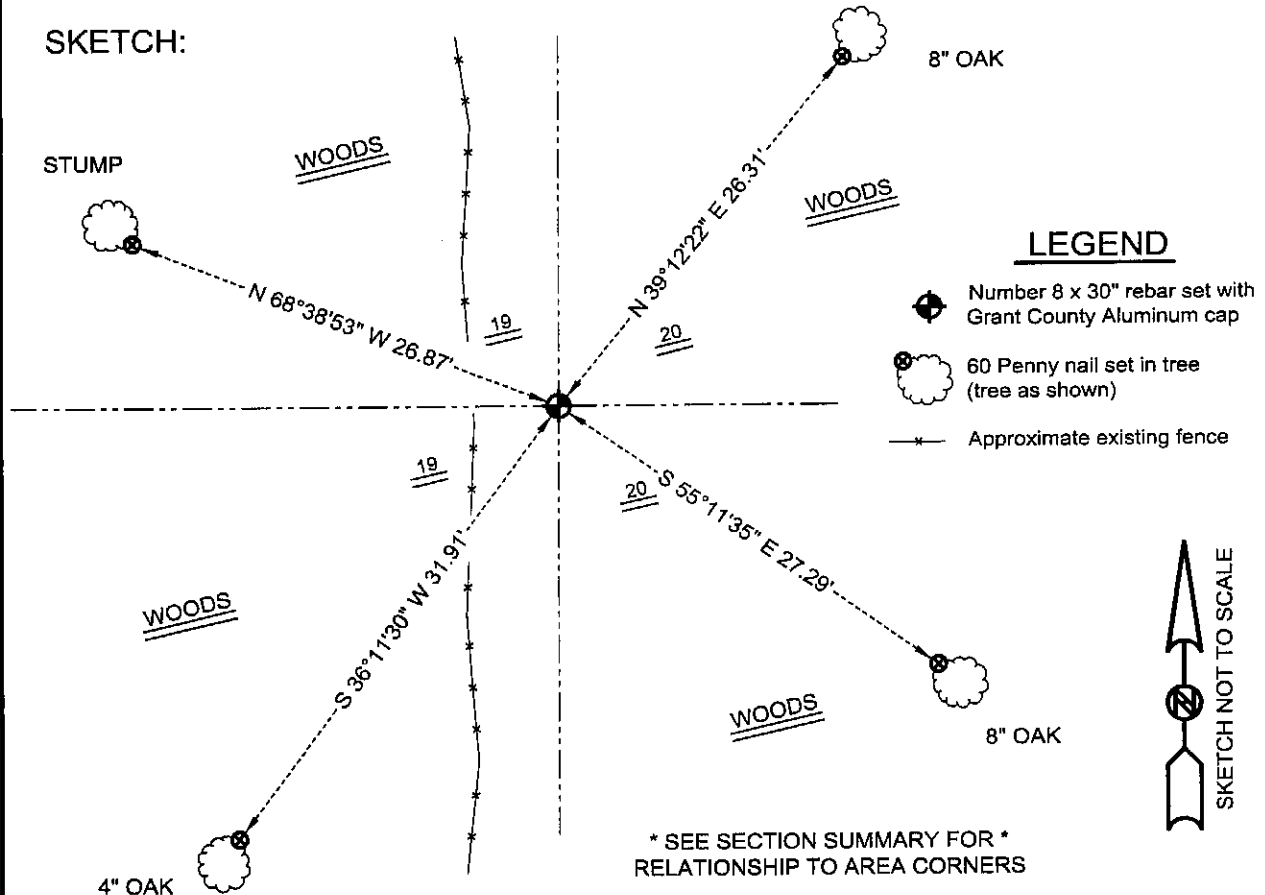
DESCRIPTION OF CORNER EVIDENCE FOUND:

I was unable to locate the Iron pipe. I did find a steel fence post at this location. I reset the corner according to Cornell's various plats. Verified this location using EDM & GPS methods.

DESCRIPTION OF CORNER AND WITNESS MONUMENTS, references and accessories used to perpetuate the original or re-established location of this corner

WITNESS TO THE CORNER LOCATION: SHELBY BLINDERT & BOBBY SEDGWICK

SKETCH:



AUSTIN ENGINEERING, LLC
4211 HWY 81 E, LANCASTER, WI 53813
PHONE 608-723-6363 FAX 608-723-6702

FIELDBOOK: SDR33, 2027
G:\T8NR2W\19
C:\SC14\SWA\TIE\T8NR2W\75

DRAWN BY: SW AUSTIN
APPROVED: LL AUSTIN
CREW: BS - SB - SA - TF