

GRANT COUNTY U.S. PUBLIC LAND SURVEY MONUMENT RECORD

INSTRUCTIONS: THIS RECORD SHALL SHOW THE LOCATION OF THE CORNER AND SHALL INCLUDE ALL OF THE FOLLOWING ELEMENTS (A THROUGH I).

(A) IDENTIFY THE CORNER AS REFERENCED TO THE U.S. PUBLIC LAND SURVEY SYSTEM

■ = CORNER MONUMENT RESTORED

WITNESSES TO CORNER LOCATION:

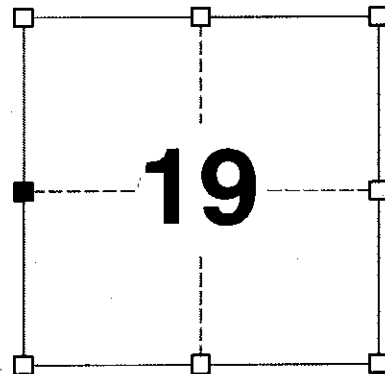
JAY P. ADAMS
JEREMY F. KRACHEY

GEOGRAPHIC COORDINATES,
NAD 83 (2011) ADJUSTMENT:

LATITUDE: 43° 09' 19.6412"
LONGITUDE: 90° 39' 59.6481"

WISCONSIN COORDINATE REFERENCE SYSTEM (WICRS),
GRANT COUNTY, NAD 83 (2011) ADJUSTMENT:

NORTHING: 635,743.95
EASTING: 830,606.92



SECTION 19
TOWNSHIP 8 NORTH, RANGE 2 WEST
TOWN OF WATTERSTOWN

(B) DESCRIBE ANY RECORD EVIDENCE, MONUMENT EVIDENCE, OCCUPATIONAL EVIDENCE, TESTIMONIAL EVIDENCE OR ANY OTHER MATERIAL EVIDENCE YOU CONSIDERED, AND WHETHER THE MONUMENT WAS FOUND OR PLACED.

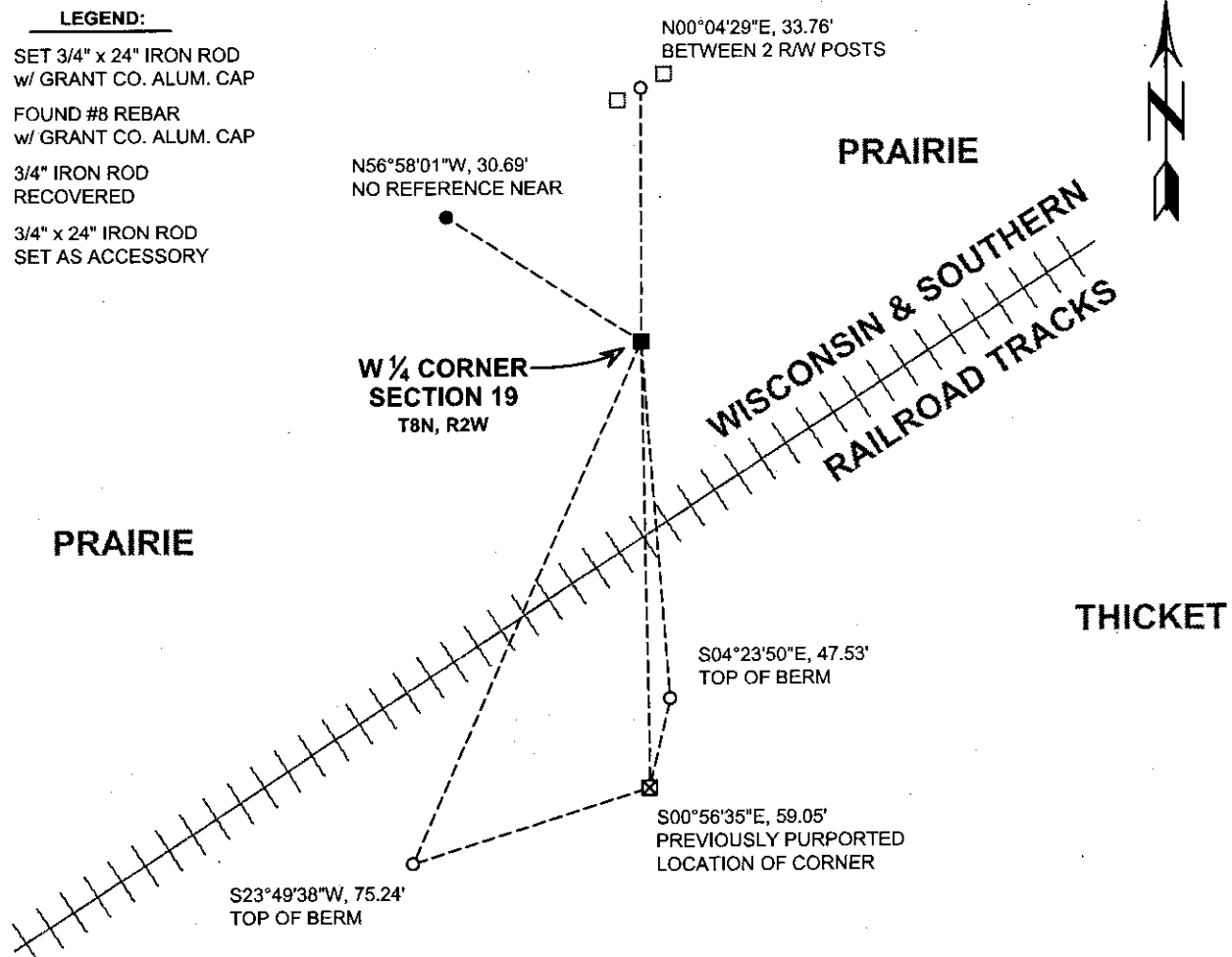
THIS CORNER WAS NOT SET BY THE ORIGINAL GOVERNMENT SURVEY. I RECOVERED THE #8 REBAR WITH GRANT COUNTY ALUMINUM MONUMENT SET BY LARRY AUSTIN. AFTER CONSIDERING OCCUPATIONAL EVIDENCE, NUMEROUS EXISTING MONUMENTS OF RECORD AND THE METHOD BY WHICH THIS CORNER WAS ESTABLISHED BY AUSTIN, I SET A 3/4" x 24" IRON ROD WITH GRANT COUNTY ALUMINUM CAP AT A LOCATION THAT MATCHES LONG-STANDING AND CONSISTENT OCCUPATIONAL EVIDENCE SPANNING EAST-WEST THROUGHOUT SECTION 19 ALONG WHAT I BELIEVE COULD BE EVIDENCE OF AN UNRECORDED SURVEY OF THE EAST-WEST QUARTER SECTION LINE. MR. AUSTIN'S MONUMENT WAS SET BASED ON THE LOCATION OF THE PROPORTIONED EAST QUARTER CORNER OF SECTION 24, T8N, R3W AND I BELIEVE THE OCCUPATIONAL EVIDENCE RECOVERED IN THE FIELD, SURVEY WORK PERFORMED BY RALPH, CLARK, AS WELL AS THE LOCATION SUGGESTED ON THE 1947 WISDOT R/W PLAT, AND HISTORIC EVIDENCE UNCOVERED IN AERIAL PHOTOGRAPHY TO SUGGEST A MORE PRUDENT LOCATION OF THIS CORNER. THIS MONUMENT WAS SET ON THE SENIOR RANGE LINE BETWEEN THE EAST QUARTER CORNER AND NORTHEAST CORNER OF SECTION 24, T8N, R3W.

(C) IN THE PLAN VIEW DRAWING BELOW, PROVIDE REFERENCE TIES TO AT LEAST 4 WITNESS MONUMENTS. WITNESS MONUMENTS SHALL BE MADE OF CONCRETE, NATURAL STONE, IRON, BEARING TREES OR ANY OTHER EQUALLY DURABLE MATERIAL. DEPICT THE RELEVANT MONUMENTS AND REFERENCE TIES WITH SUFFICIENT DETAIL TO ENABLE ACCURATE RELOCATION OF THE CORNER IF THE CORNER MONUMENT IS DISTURBED.

(D)

LEGEND:

- SET 3/4" x 24" IRON ROD w/ GRANT CO. ALUM. CAP
- ⊠ FOUND #8 REBAR w/ GRANT CO. ALUM. CAP
- 3/4" IRON ROD RECOVERED
- 3/4" x 24" IRON ROD SET AS ACCESSORY



(E) DESCRIBE ANY MATERIAL DISCREPANCY BETWEEN THE LOCATION OF THE CORNER AS RESTORED OR REESTABLISHED AND THE LOCATION OF THAT CORNER AS PREVIOUSLY RESTORED OR REESTABLISHED BY DISTANCE AND DIRECTION. SHOW THE DISCREPANCY ON THE PLAN VIEW DRAWING UNDER (D), ABOVE. SHOW THE DISTANCES BETWEEN THE CORNER AS PREVIOUSLY RESTORED OR REESTABLISHED AND (1) THE CORNER AS RESTORED OR REESTABLISHED, AND (2) TO AT LEAST 2 OF THE WITNESS MONUMENTS SHOWN ON THE DRAWING IN (D) ABOVE.

CORNER MOST PREVIOUSLY REPORTED TO BE A #8 REBAR WITH A GRANT COUNTY ALUMINUM CAP. I RECOVERED SAID MONUMENT AND REESTABLISHED THE CORNER AS DEPICTED IN (D).

(F) WAS THE CORNER RESTORED THROUGH ACCEPTANCE OF (1) AN OBLITERATED EVIDENCE LOCATION, OR (2) A FOUND PERPETUATED LOCATION?

(1) AN OBLITERATED EVIDENCE LOCATION

(G&H) WAS THE CORNER REESTABLISHED THROUGH LOST CORNER PROPORTIONATE METHODS? IF SO, SHOW THE METHOD, INCLUDING THE DIRECTIONS AND DISTANCES TO OTHER PUBLIC LAND SURVEY CORNERS USED AS EVIDENCE OR USED FOR PROPORTIONING IN DETERMINING THE CORNER LOCATION.

N/A

CORNER HISTORY

THIS CORNER WAS NOT ESTABLISHED BY THE ORIGINAL GOVERNMENT SURVEY.

IN RIGHT OF WAY PLAT PROJECT E 0209 (7), FOR COUNTY TRUNK HIGHWAY "C" (NOW STATE TRUNK HIGHWAY "133"), THE EAST QUARTER CORNER OF SECTION 24, T8N, R3W IS DEPICTED TO BE VERY NEAR THE CENTERLINE OF THE CHICAGO, MILWAUKEE, ST. PAUL AND PACIFIC RAILROAD TRACKS.

IN A RAILROAD RIGHT OF WAY PLAT FOR PROJECT ID 1000-21-63 DATED 23 DECEMBER 1880, THE CORNER APPEARS TO BE DEPICTED AS COMMON AND LOCATED SOUTH OF THE CENTERLINE OF THE TRACKS. THE PLAT LACKS DETAILS FOR ANY OCCUPATION.

IN A PLAT OF SURVEY BY HOMER D. RALPH DATED FEBRUARY 1968, MONUMENTS WERE SET ON THE PURPORTED EAST-WEST QUARTER SECTION LINE EAST OF THIS CORNER.

IN A PLAT OF SURVEY DATED JANUARY/FEBRUARY AND JULY 1973, RALPH USES PIPES SET FROM HIS PREVIOUS SURVEY AND SETS AN ADDITIONAL PIPE IN AN E-W FENCELINE, PRESUMABLY BEING ON THE EAST-WEST QUARTER SECTION LINE.

IN A PLAT OF SURVEY DATED FEBRUARY/MARCH, 1974 RALPH AGAIN USES PIPES SET FROM HIS PREVIOUS SURVEYS AND SETS ADDITIONAL MONUMENTS IN AN EAST-WEST FENCELINE, PRESUMABLY BEING ON THE EAST-WEST QUARTER SECTION LINE.

AFTER THE COMPLETION OF THE FIELD WORK FOR THE SURVEY THAT GENERATED THIS TIE SHEET, AN UNRECORDED PLAT OF SURVEY HELD BY THE GRANT COUNTY ABSTRACT COMPANY WAS MADE PUBLIC RECORD WHEREBY WILBUR CLARK, IN APRIL 1975, SHOWS PIPES RECOVERED NEAR WHAT IS REPORTED AS THE EAST-WEST QUARTER SECTION LINE FROM THE RALPH SURVEY(S) WITH NEW MONUMENTS SET ON THE EAST-WEST QUARTER SECTION LINE (AS DETERMINED BY CLARK) WHEREBY THE WEST QUARTER CORNER WAS NOT SET BUT IS CLEARLY DEPICTED ON HIS PLAT AS BEING NORTH AND WEST OF THE CENTERLINE OF THE CURRENT WISCONSIN AND SOUTHERN RAILROAD RIGHT OF WAY CENTERLINE. HOWEVER, NO RETRACEMENT OF THE SENIOR LINE ON THE WEST SIDE OF SECTION 19 WAS REPORTED BY CLARK.

IN A SUBDIVISION PLAT RECORDED 9 MAY 1975, HOMER RALPH CALLS OUT A TIE DISTANCE AND BEARING TO THE WEST QUARTER CORNER WITHOUT MENTION OF A MONUMENT AND THEN REPORTS SETTING MONUMENTS ON THE EAST-WEST QUARTER SECTION LINE WITHOUT A TIE OR REFERENCE TO THE EAST QUARTER CORNER OF THE SECTION.

IN A PLAT OF SURVEY DATED NOVEMBER, 1975, HOMER RALPH SURVEYED THE EAST LINE OF THE NORTHEAST QUARTER OF SECTION 24, T8N, R3W. RALPH NOTES THE WILBUR CLARK SURVEY IN DETERMINING THE WEST QUARTER CORNER OF SECTION 19 WHILE INCORRECTLY HOLDING THE WEST QUARTER CORNER OF SECTION 19 AS THE SENIOR CORNER FOR THE EAST LINE OF SECTION 24. PIPES SET BY PREVIOUS SURVEYS ARE NOTED WITH LIMITED DIMENSIONS SHOWN BETWEEN THEM.

IN A PLAT OF SURVEY DATED 17 AUGUST, 1979, DAVID DAVIS REPORTS SETTING THE EAST QUARTER CORNER OF SECTION 24, T8N R3W AT A SINGLE PROPORTIONATE LOCATION BETWEEN THE NORTHEAST AND SOUTHEAST CORNERS OF SECTION 24.

IN A TIE SHEET DATED 8 APRIL, 1997, ROSS A. MICHAELS REPORTS FINDING A 1" IRON PIPE AT THE EAST QUARTER CORNER OF SECTION 24, T8N R3W.

IN A PLAT OF SURVEY DATED 9 MAY 1997, ROSS A. MICHAELS REPORTS FINDING A 1.25" IRON PIPE AT THE EAST QUARTER CORNER OF SECTION 24, T8N R3W.

IN PLATS OF SURVEY DATED 2 DECEMBER 1997, ROSS A MICHAELS REPORTS FINDING A 1.25" IRON PIPE AT THE WEST QUARTER CORNER OF THIS SECTION.

IN A TIE SHEET DATED 23 JUNE 2000, LARRY L. AUSTIN SET A #8 x 30" REBAR WITH A GRANT COUNTY ALUMINUM CAP AT THE "PROPORTIONED OFFSET AND ONLINE BETWEEN THE NORTHEAST CORNER" AND THE EAST QUARTER CORNER OF SECTION 24, T8N, R3W.

IN CERTIFIED SURVEY MAPS RECORDED IN VOLUMES/PAGES 5/243, 5/246, 8/43, 8/107, 10/213 AUSTIN REPORTS FINDING THE SAME MONUMENT.

IN A PLAT OF SURVEY DATED 13 DECEMBER, 2000, AUSTIN REPORTS FINDING THE MONUMENT HE SET AT THE CORNER AND ALSO NOTING 1" IRON PIPES FOUND PRESUMABLY FROM THE RALPH SURVEYS IN AN EAST-WEST FENCELINE 68' +/- NORTH OF WHERE AUSTIN REPORTS THE "TRUE" EAST-WEST QUARTER SECTION LINE.

IN A WISCONSIN DEPARTMENT OF TRANSPORTATION RIGHT OF WAY PLAT (PROJECT ID 5616-01-21) FOR STATE TRUNK HIGHWAY "133" DATED 19 FEBRUARY 2002, TERRANCE L. GENSKE REPORTS FINDING A #8 REBAR WITH ALUMINUM CAP AT THIS CORNER.

IN A PLAT OF SURVEY DATED 15 OCTOBER, 2007, AUSTIN AGAIN REPORTS FINING AN #8 REBAR w/GRANT COUNTY ALUMINUM CAP AT THIS CORNER. THE SURVEY ALSO NOTES MONUMENTS FROM THE RALPH SURVEYS AS BEING 66' TO 68' +/- NORTH OFF THE EAST-WEST QUARTER SECTION LINE (WHICH IS NOTED AS BEING COINCIDENT WITH THE " HISTORICAL AND OCCUPIED LOCATION") OF THE NORTHWEST CORNER OF THE NORTHEAST QUARTER OF THE SOUTHWEST QUARTER.

IN PLATS OF SURVEY DATED 1 NOVEMBER, 2010 AND 1 MAY, 2013, AARON J. AUSTIN REPORTED FINDING A #8 REBAR W/GRANT COUNTY ALUMINUM CAP AT THE CORNER .

(I) I, JAY P. ADAMS, P.L.S. - 2879, CERTIFY THAT THE CORNER LOCATION SHOWN ON THIS RECORD WAS DETERMINED BY ME OR UNDER MY DIRECTION AND CONTROL AND THAT THIS U.S. PUBLIC LAND SURVEY MONUMENT RECORD IS CORRECT AND COMPLETE TO THE BEST OF MY KNOWLEDGE AND BELIEF.

SIGNATURE

5 DECEMBER 2016

DATE



GRANT COUNTY CERTIFIED LAND CORNER

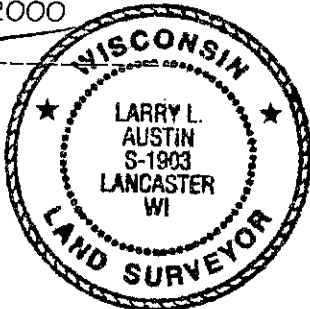
CORNER NUMBER 74

CERTIFICATE:

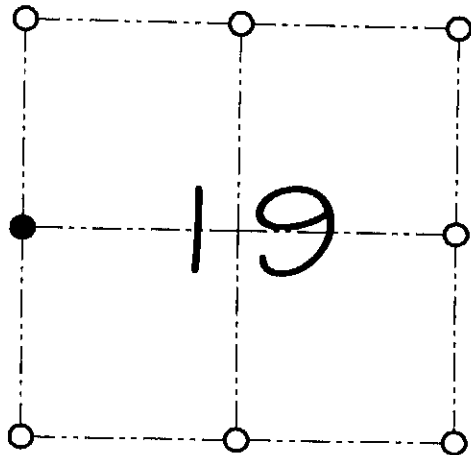
I, Larry L. Austin, do hereby certify that on the 19th day of June, 2000, I found no evidence of the West 1/4 corner of Section 19, Town 8 North, Range 2 West, of the 4th Principal Meridian, and I re-established said corner according to the Wisconsin statutes as shown and described hereon.

Dated this 23rd day of June, 2000

Larry L. Austin
Larry L. Austin S-1903



SEAL



● = CORNER LOCATION

WEST 1/4 CORNER OF
SECTION 19, T 8 N R 2 W
TOWN OF WATTERSTOWN

HISTORY OF ORIGINAL CORNER ESTABLISHMENT:

Corner was never originally set.
No other record of the corner was found.

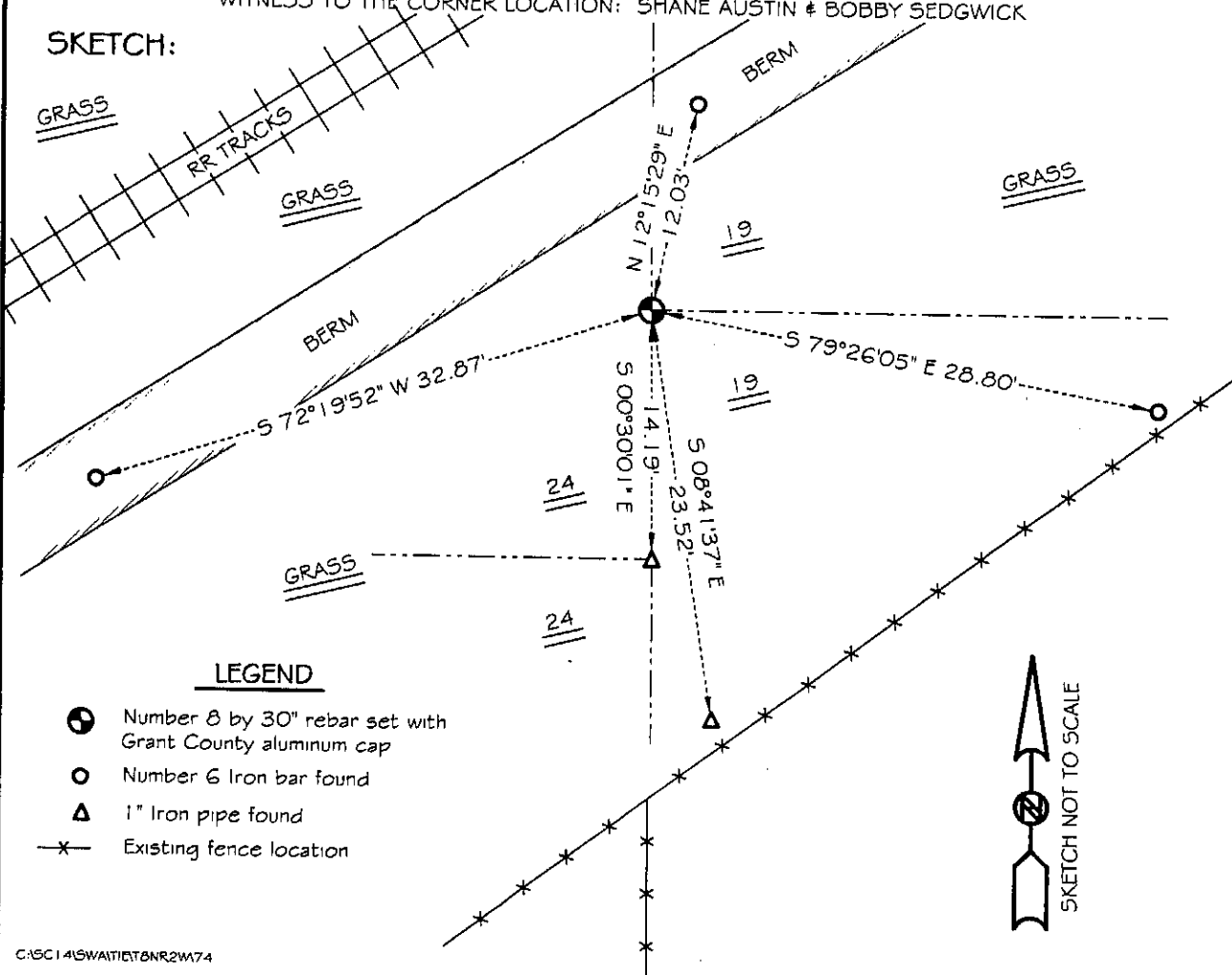
DESCRIPTION OF CORNER EVIDENCE FOUND:

I found the existing East 1/4 of Section 24 and set the West 1/4 corner of Section 19 at the proportioned offset and online between the Northeast corner of Section 24 and the East 1/4 of Section 24, T8N R3W. Verified this location using EDM & GPS methods.

DESCRIPTION OF CORNER AND WITNESS MONUMENTS, references and accessories used to perpetuate the original or re-established location of this corner

WITNESS TO THE CORNER LOCATION: SHANE AUSTIN & BOBBY SEDGWICK

SKETCH:



LEGEND

- Number 8 by 30" rebar set with Grant County aluminum cap
- Number 6 Iron bar found
- △ 1" Iron pipe found
- *— Existing fence location

