

Muscoda Twp.

U. S. PUBLIC LAND SURVEY MONUMENT RECORD

GRANT County, Wisconsin.

SEE ATTACHED NOTES.

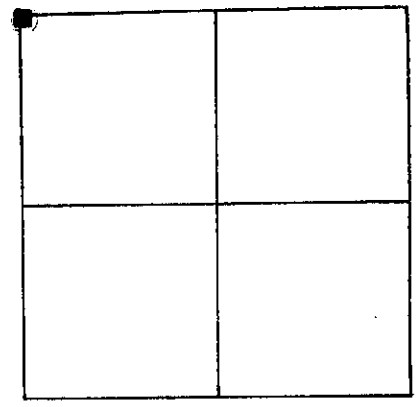
19 8 2

Basis for monument location.

Located a 2" diameter iron pipe at this location. Only available evidence of the corner. Accepted this iron as the true corner.

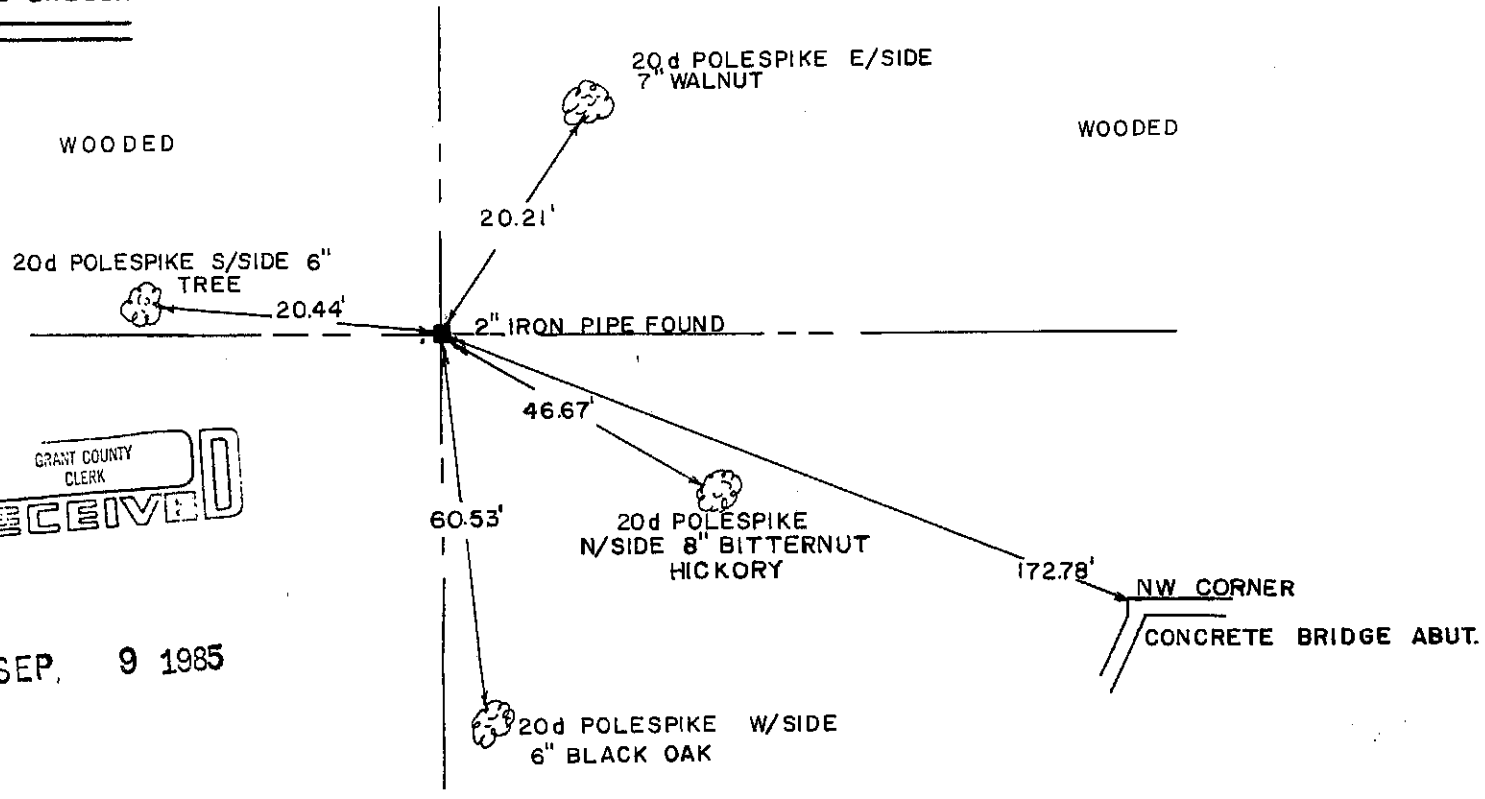


Section ~~18~~, T 8 N, R 1 W



Corner Location (Indicate by - ■)

Tie sketch



GRANT COUNTY CLERK RECEIVED

SEP. 9 1985

I, MATTHEW J. JANIAK Certify that the corner location shown hereon this record was determined by me or under my direction and control and that this U. S. Public Land Survey Monument Record is correct and complete to the best of my knowledge and belief.

9-5-85
Date

Matthew J. Janiak
Registered Land Surveyor



73
p. 53

WELSH CO. 110

#164 SECTION 8, T2N R4W

19

6

GRANT COUNTY
CLERK
DEPT. OF REVENUE

JAN 9

