

GRANT COUNTY CERTIFIED LAND CORNER

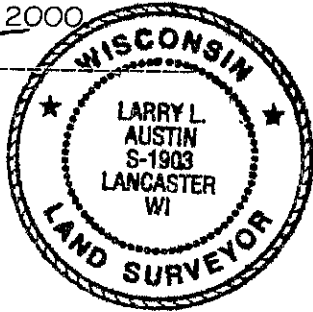
CORNER NUMBER 70

CERTIFICATE:

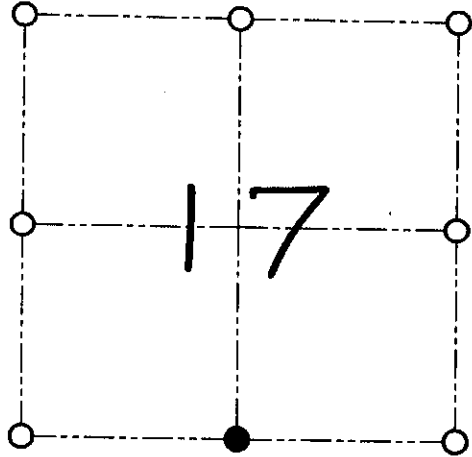
I, Larry L. Austin, do hereby certify that on the 19th day of June, 2000, I found no evidence of the South 1/4 corner of Section 17, Town 8 North, Range 2 West, of the 4th Principal Meridian, and I re-established said corner according to the Wisconsin statutes as shown and described hereon.

Dated this 23rd day of June, 2000

Larry L. Austin
Larry L. Austin S-1903



SEAL



● = CORNER LOCATION

SOUTH 1/4 CORNER OF
SECTION 17, T 8 N R 2 W
TOWN OF WATTERSTOWN

HISTORY OF ORIGINAL CORNER ESTABLISHMENT:

Corner was originally set in 1833 by Harvey Parke.
No other record of the corner was found.

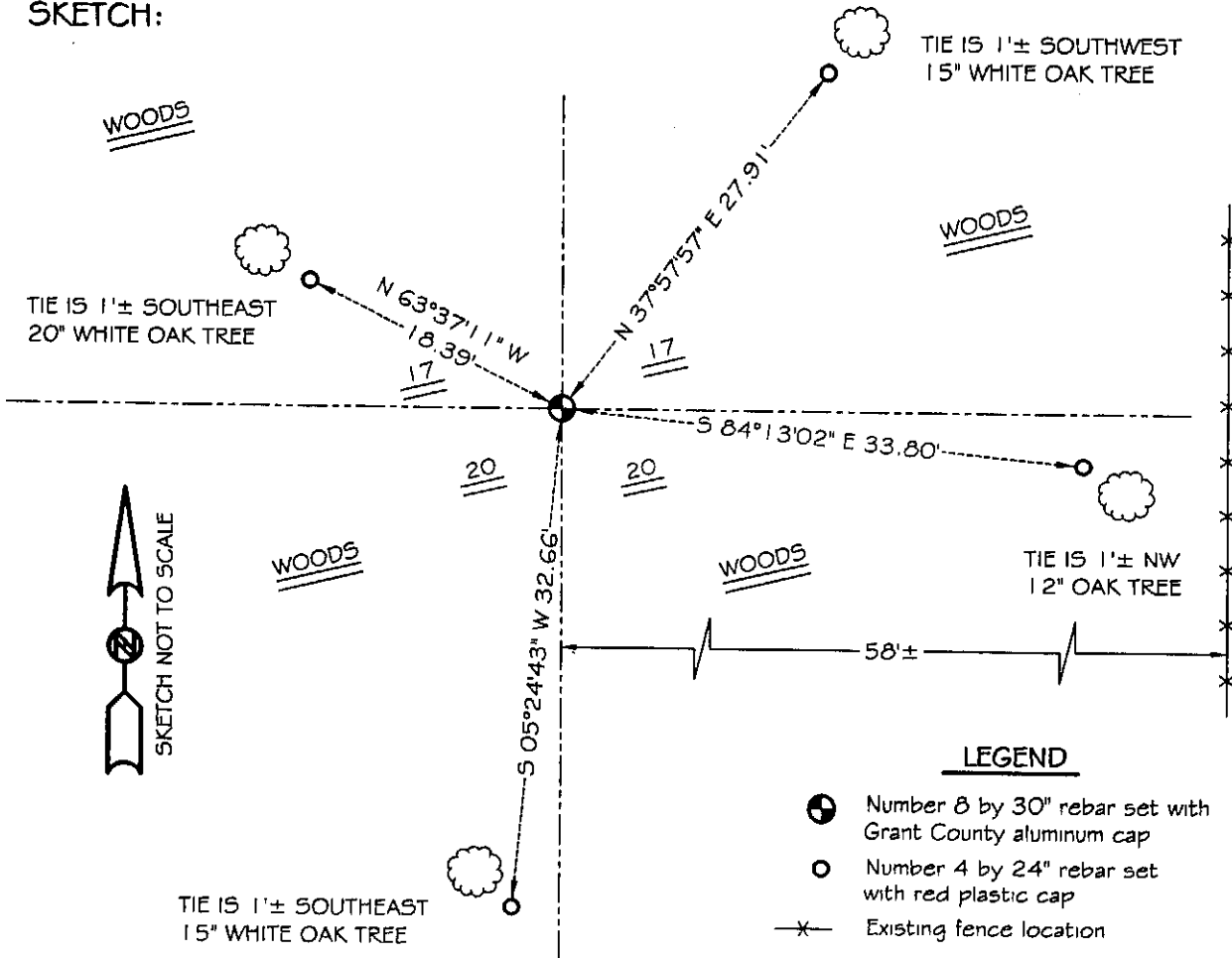
DESCRIPTION OF CORNER EVIDENCE FOUND:

I found various fences in the area - none of which appeared to fit the location of the corner. I reset the corner online between the Southwest and Southeast corners of Section 17 and online with a projection of occupied 40's North of the corner. Verified this location using EDM & GPS methods.

DESCRIPTION OF CORNER AND WITNESS MONUMENTS, references and accessories used to perpetuate the original or re-established location of this corner

WITNESS TO THE CORNER LOCATION: SHANE AUSTIN & BOBBY SEDGWICK

SKETCH:



LEGEND

- Number 8 by 30" rebar set with Grant County aluminum cap
- Number 4 by 24" rebar set with red plastic cap
- *— Existing fence location