

COPY

APR 25 1995

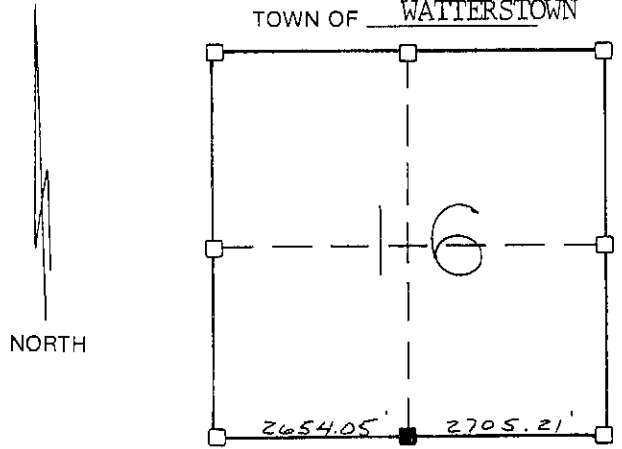
GOVERNMENT CORNER RECORD

SOUTH 1/4 CORNER, SECTION 16, TOWNSHIP 8 NORTH, RANGE 2 EAST-WEST, TOWN, CITY OR VILLAGE OF WATTERSTOWN TYPE OF MONUMENT: 3/4" IRON ROD ELEVATION - M.S.L. DATUM

WITNESSES TO CORNER LOCATION

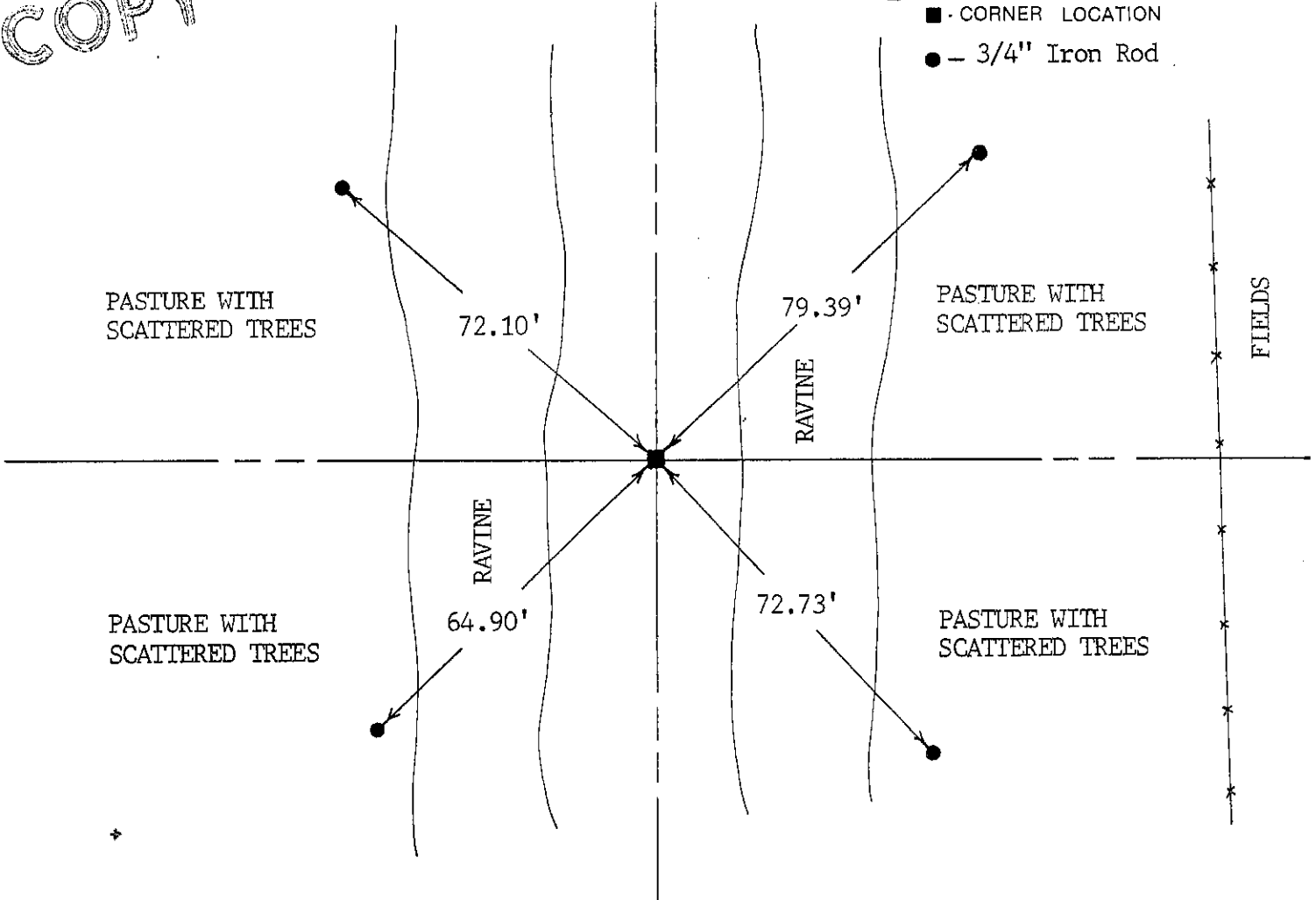
Christopher G. Reedy
Curtis J. Cummer

SECTION 16, T 8 N, R 2 EW TOWN OF WATTERSTOWN



TIE SKETCH (SHOW ALL HELPFUL FEATURES)

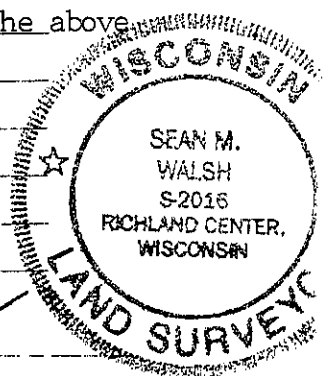
COPY



SURVEYOR'S CERTIFICATE

SEAL S. 2016

I, Sean M. Walsh, DO HEREBY CERTIFY THAT I have re-established the above corner at a location determined by the proportionate projection of the occupied forty corner along the South line of the Southeast 1/4 westward from the Southeast corner as the only acceptable evidence in the area. This information is correct and true to the best of my information, knowledge and belief.



DATED THIS 17 DAY OF April, 1995, Sean M. Walsh, REGISTERED LAND SURVEYOR