

U.S. PUBLIC LAND SURVEY MONUMENT RECORD – GRANT COUNTY, WI

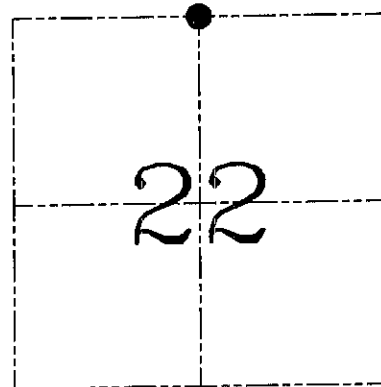
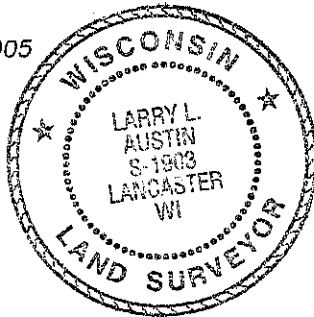
Section 22, Town 8 North Range 2 West, Town of Watterstown

CERTIFICATE

I, Larry L. Austin, do hereby certify that the corner location on this record was determined by me and/or under my direct supervision and that this U.S. public land survey monument record is correct and complete to the best of my knowledge and belief.

Dated this 22th day of November, 2005

Larry L. Austin
Larry L. Austin S-1903



● = CORNER LOCATION

HISTORY OF CORNER ESTABLISHMENT

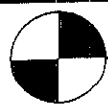
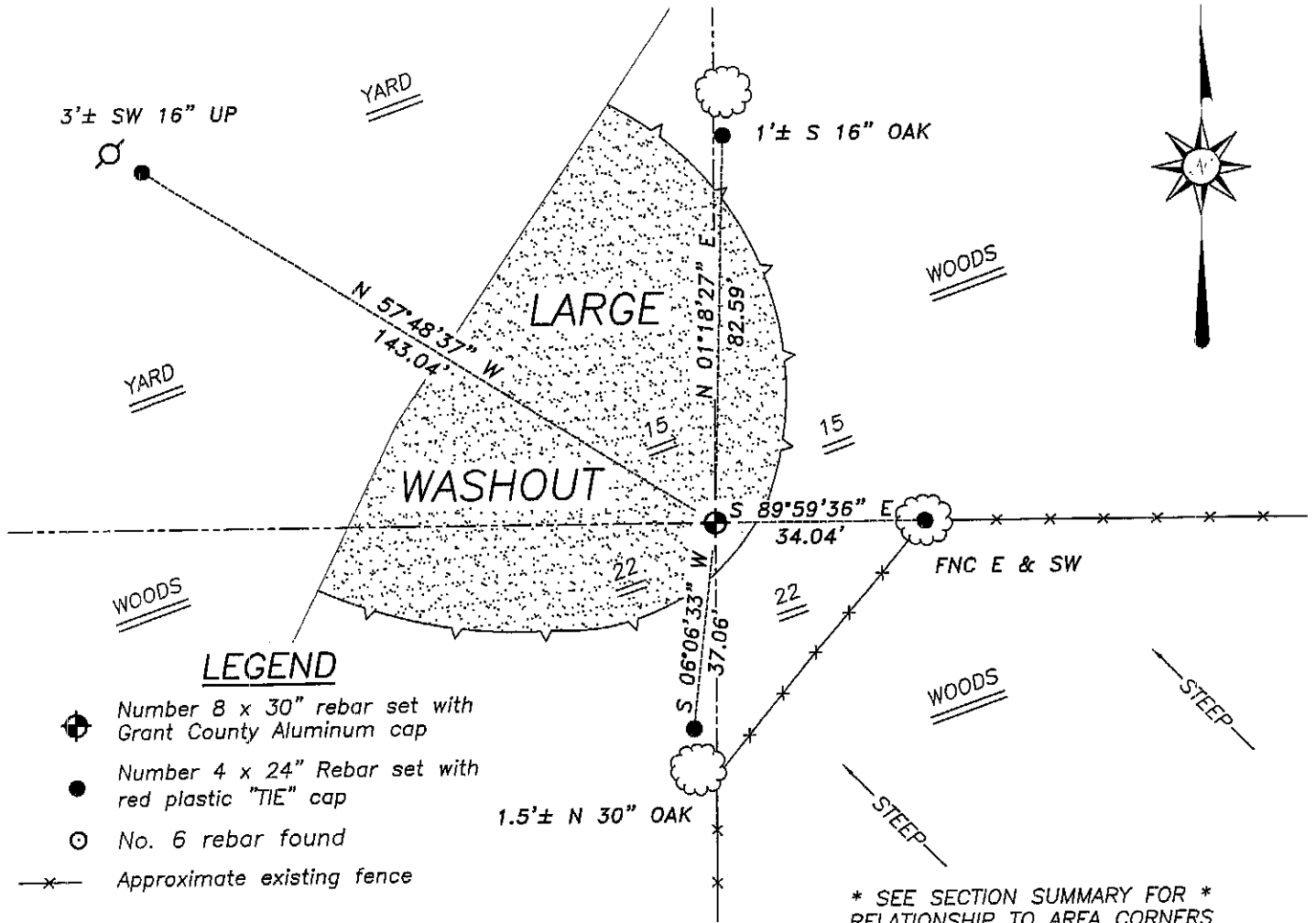
Corner was originally set in 1832 by Parke.
No other record of the corner was found.

DESCRIPTION OF CORNER EVIDENCE FOUND

I reset the corner at an occupied location.
Verified this location using EDM & GPS methods.

DESCRIPTION OF CORNER AND WITNESS MONUMENTS, references and accessories used to perpetuate the original or re-established location of this corner. Witnesses to corner location Brad Digman & Shane Austin.

SKETCH:



Austin Engineering LLC

4211 HWY 81 E, LANCASTER, WI 53813
PHONE 608-723-6363 FAX 608-723-6702

JOB NUMBER 04S149
FIELDBOOK: 2505
G:\T8NR2W\27
H:\TIE\T8NR2W\66

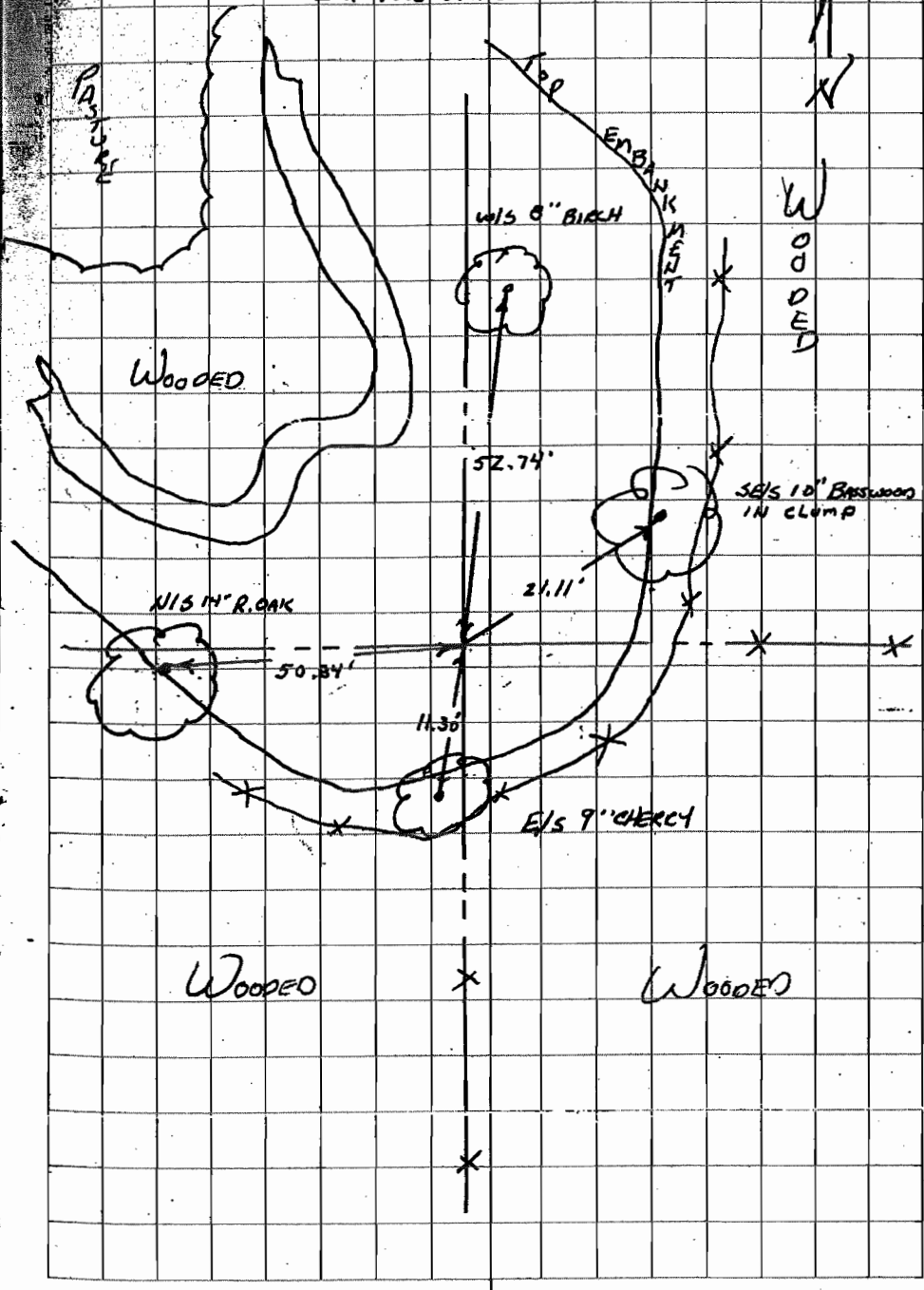
DRAWN BY: ML DIGMAN
APPROVED: LL AUSTIN

SKETCH NOT TO SCALE

SOUTH 1/4 CORNER

(67)

SECTION 15, T-2W
SET 3/4" x 24 BAR
20d POLE SPIRES SET IN TREES



NOV 25 2002

FROM JEWELL & ASSOC
BENCHMARK RECORD