

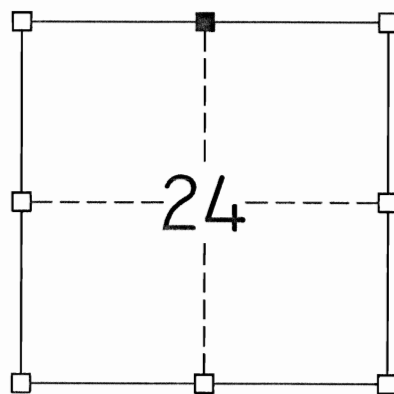
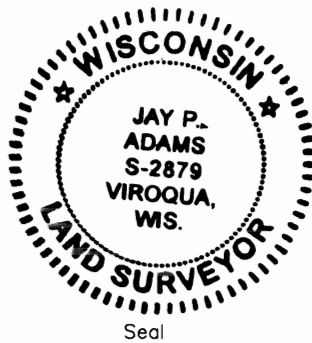
STATE OF WISCONSIN)
 COUNTY OF GRANT) S.S.

CERTIFICATE

I, Jay P. Adams, do hereby certify that
 on the 26 th day of June, 2009
 I found (evidence)(~~no evidence~~) of the North Quarter
Corner of Section 24, T. 8 N., R. 2 W.
 of the Fourth Principal Meridian, and I re-established
 said corner according to the Wisconsin Statutes as
 shown and described hereon.

Dated this 1st day of July, 2009.

J. P. Adams
 Registered Land Surveyor S-2879



■ = CORNER LOCATION
 T 8 N R 2 W
 Town of Watterstown

History of original corner establishment:

ORIGINAL GOVERNMENT SURVEY PERFORMED BY HARVEY PARKE IN THE FIRST QUARTER OF 1833. IN A CSM DATED THE 11TH DAY OF MAY, 1981, ROBERT M. LAMPMAN REPORTED A STONE MOUND AT THE CORNER LOCATION.

Description of corner evidence found:

I RECOVERED THE STONE MOUND AT THE REMAINS OF A FOUR-WAY FENCE INTERSECTION AND ACCEPTED ITS LOCATION AS THE CORNER.

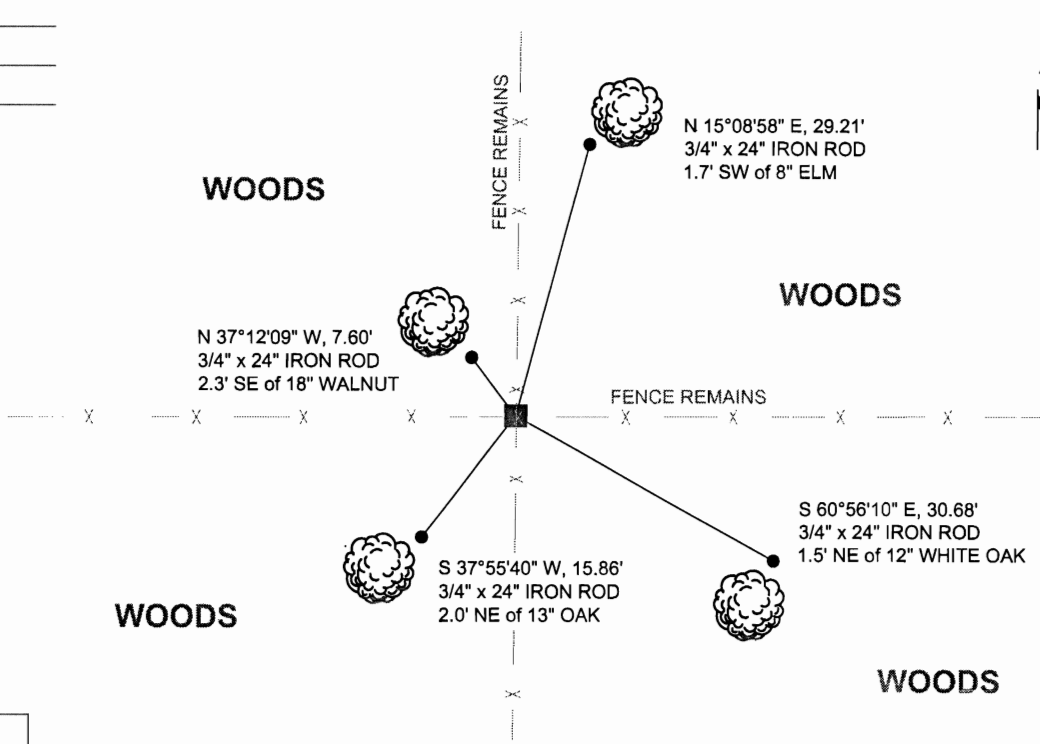
Description of corner and witness monuments, references and accessories used to perpetuate the original or re-established location of this corner:

Witnesses to corner location:

Jay P. Adams
Terry L. Adams

Sketch:

- 1 1/4" X 30" IRON ROD w/ GRANT COUNTY ALUMINUM MONUMENT
- 3/4" x 24" IRON ROD SET AS ACCESSORY



SURVEY CONTROL ORDER

horizontal	-
vertical	-

GRANT COUNTY COORDINATE SYSTEM

Corner	North (Y)	East (X)	Elevation (Z)	Zone
Control Sta. Name	-	-	-	