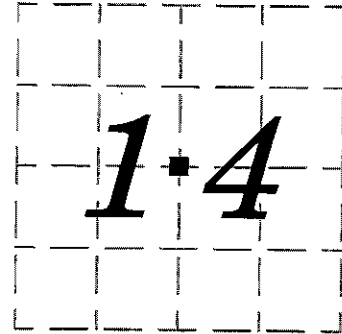


U.S. PUBLIC LAND SURVEY MONUMENT RECORD

NOTE: This form is intended to fulfill all requirements of Wisconsin Administrative Code, Chapter A-E7.08, U.S. Public Land Survey Monument Record (3) (a) (b) (c) (d) (e) (f) (g) (h) (i). Use additional sheet if necessary.

CORNER NO. 58.5

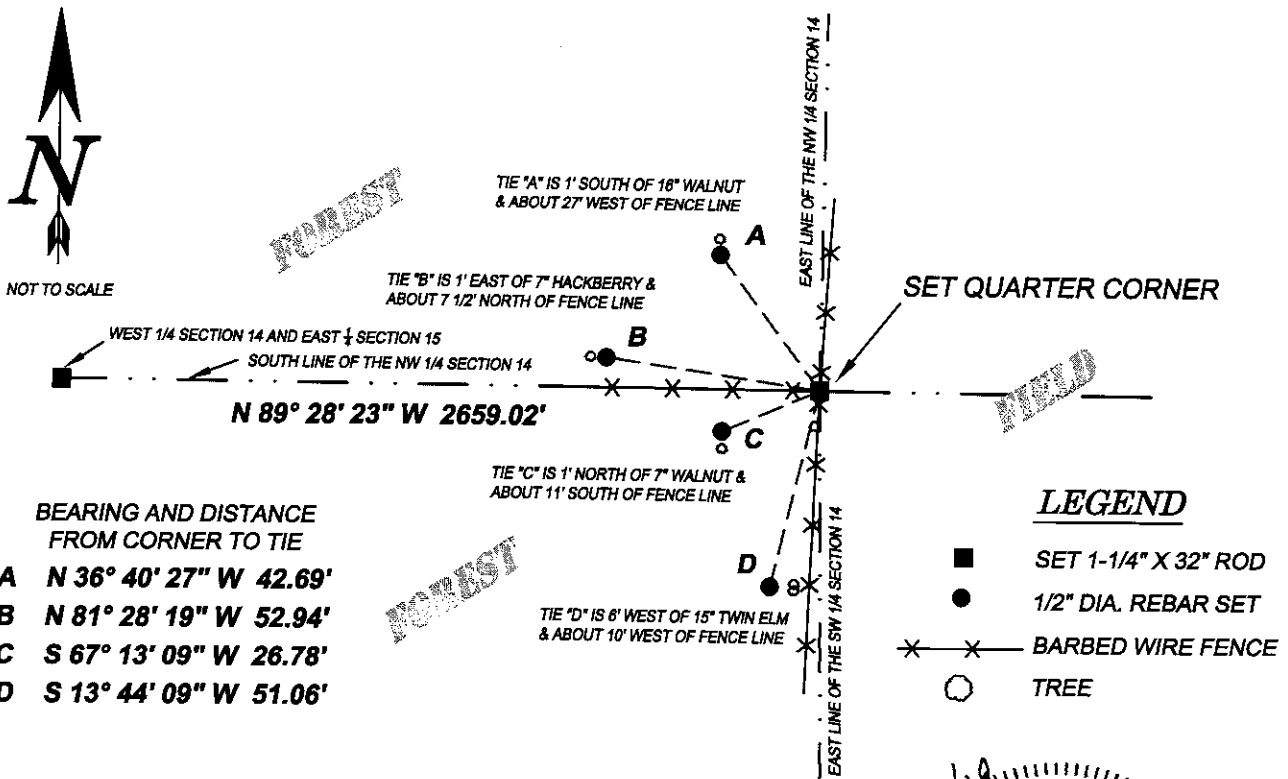
(a) The Center quarter corner of section 14, Township 8 N, Range 2 W, Watterstown Township, Grant County, Wisconsin.



(b) (f) (g) (h) Description of monument found at this corner and if it was accepted, state all evidence (material, testimonial, occupational, plats, records, other monuments) used as a basis for accepting. If not accepted or nothing was found, state evidence used as basis for establishing location and what was set. If reestablished through lost corner proportionate methods, indicate all monuments, distances and directions used.

NO CORNER OR TIE SHEET WAS FOUND. ACCEPTED TEE INTERSECTION OF AN ANCIENT FENCE LINE. THIS FENCE LINE INTERSECTION WAS THE BEST AVAILABLE EVIDENCE AND IS SUPPORTED BY EVIDENCE FOUND IN SEARCHING IN AN ABSTRACT OF TITLE AND IN OLD PLAT BOOKS SHOWING THE SURROUNDING FORTIES (AS FENCE LINE INDICATES) TO HAVE BEEN ESTABLISHED BY DIFFERENT LAND OWNERS SINCE 1895.

(c) (d) (e) Plan view of corner with ties to at least 4 witness monuments. If in disagreement with previously established corner, show the distances between the two corners and also indicate the ties to disputed corner.



(i) I certify that the corner location on this record was determined by me or under my direction and control and that this U.S. Public Land Survey Monument Record is correct and complete to the best of my knowledge and belief.

Signature James E Reiter Date 2/8/19

