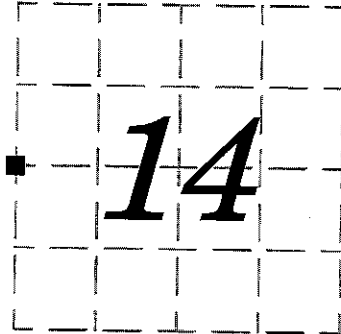


U.S. PUBLIC LAND SURVEY MONUMENT RECORD

NOTE: This form is intended to fulfill all requirements of Wisconsin Administrative Code, Chapter A-E7.08, U.S. Public Land Survey Monument Record (3) (a) (b) (c) (d) (e) (f) (g) (h) (i). Use additional sheet if necessary.

CORNER NO. 58

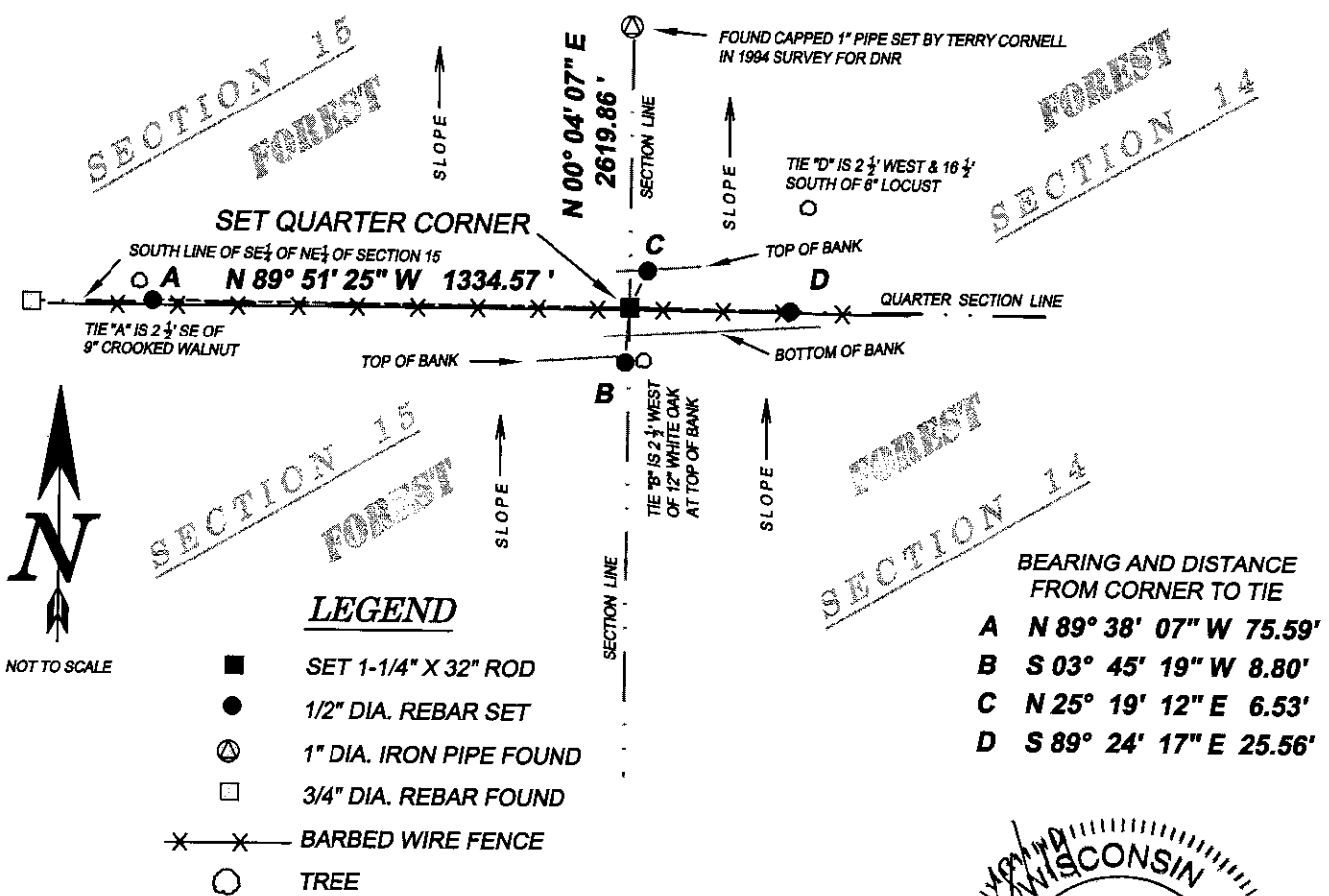
(a) The one quarter corner common to sections 14 and 15, Township 8 N, Range 2 W, Watterstown Township, Grant County, Wisconsin.



(b) (f) (g) (h) Description of monument found at this corner and if it was accepted, state all evidence (material, testimonial, occupational, plats, records, other monuments) used as a basis for accepting. If not accepted or nothing was found, state evidence used as basis for establishing location and what was set. If reestablished through lost corner proportionate methods, indicate all monuments, distances and directions used.

NO CORNER OR TIE SHEET WAS FOUND. ESTABLISHED LOCATION OF THE QUARTER CORNER EVIDENCED BY A SURVEY PERFORMED BY TERRY CORNELL OF WOODLAND CONSULTANTS, INC. DONE IN 1994, FOR THE DNR, THIS SURVEY IS FILED AS SURVEY PLAT NO. 14 WITH GRANT COUNTY. I FOUND A CAPPED IRON PIPE SET BY CORNELL AT THE SECTION CORNER, COMMON CORNER OF SECTIONS 10, 11, 14, AND 15, AND CAPPED IRON PIPES ALSO SET BY CORNELL AS 1/16TH CORNERS EAST AND WEST OF THE SECTION CORNER. IN HIS SURVEY HE FOUND AND LOCATED A STONE AT THE COMMON QUARTER CORNER OF SECTIONS 14 AND 15. THE DATA ON THE PLAT AND THE FOUND PIPES FIT VERY GOOD TOGETHER AFTER HOLDING THE SECTION CORNER AND ROTATING TO THE OTHER FOUND PIPES. THE SET CORNER FALLS UP AGAINST THE NW SIDE OF A WOOD POST BRACED IN AN EAST-WEST FENCE LINE.

(c) (d) (e) Plan view of corner with ties to at least 4 witness monuments. If in disagreement with previously established corner, show the distances between the two corners and also indicate the ties to disputed corner.



LEGEND

- SET 1-1/4" X 32" ROD
- 1/2" DIA. REBAR SET
- ⊙ 1" DIA. IRON PIPE FOUND
- 3/4" DIA. REBAR FOUND
- x—x— BARBED WIRE FENCE
- TREE

BEARING AND DISTANCE FROM CORNER TO TIE

A	N 89° 38' 07" W	75.59'
B	S 03° 45' 19" W	8.80'
C	N 25° 19' 12" E	6.53'
D	S 89° 24' 17" E	25.56'

(i) I certify that the corner location on this record was determined by me or under my direction and control and that this U.S. Public Land Survey Monument Record is correct and complete to the best of my knowledge and belief.

Signature James E Reiter Date 2/8/2019

