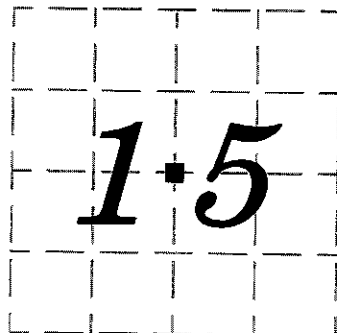


U.S. PUBLIC LAND SURVEY MONUMENT RECORD

NOTE: This form is intended to fulfill all requirements of Wisconsin Administrative Code, Chapter A-E7.08, U.S. Public Land Survey Monument Record (3) (a) (b) (c) (d) (e) (f) (g) (h) (i). Use additional sheet if necessary.

CORNER NO. 57.5

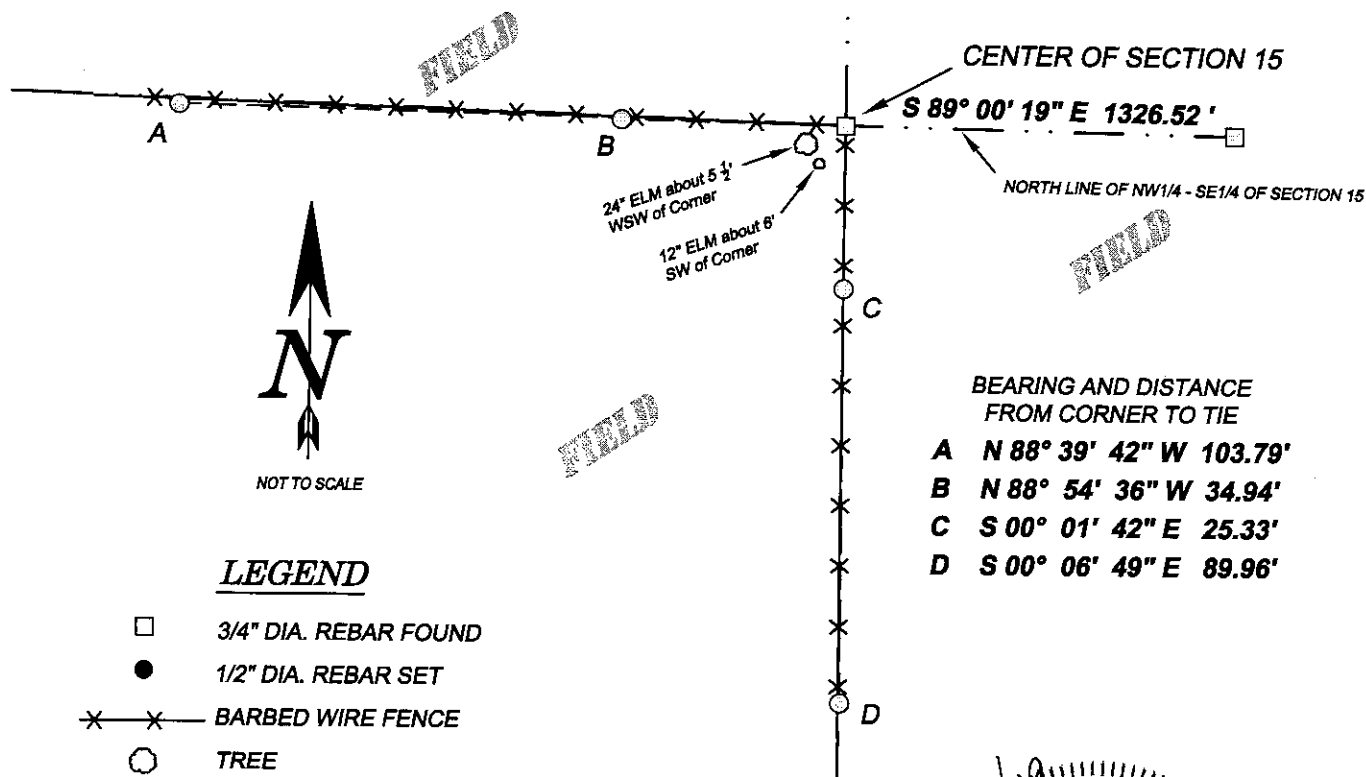
(a) The Center quarter corner of section 15, Township 8 N, Range 2 W, Watterstown Township, Grant County, Wisconsin.



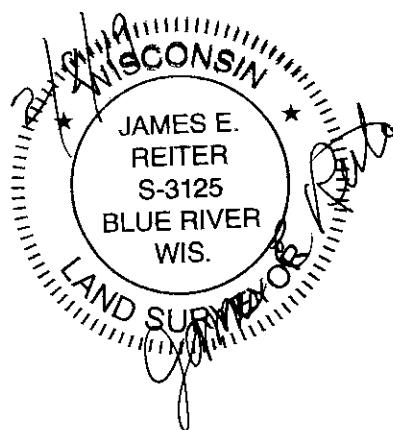
(b) (f) (g) (h) Description of monument found at this corner and if it was accepted, state all evidence (material, testimonial, occupational, plats, records, other monuments) used as a basis for accepting. If not accepted or nothing was found, state evidence used as basis for establishing location and what was set. If reestablished through lost corner proportionate methods, indicate all monuments, distances and directions used.

Accepted a found 3/4 inch rebar at fence corner. This center of section was set for a Plat of Survey done by Matthew J. Janiak of Benchmark Surveys, Inc. in October of 1987 for Ed Reiter. No tie sheet was found for this corner.

(c) (d) (e) Plan view of corner with ties to at least 4 witness monuments. If in disagreement with previously established corner, show the distances between the two corners and also indicate the ties to disputed corner.



(i) I certify that the corner location on this record was determined by me or under my direction and control and that this U.S. Public Land Survey Monument Record is correct and complete to the best of my knowledge and belief.



Signature James E Reiter Date 2/8/19